

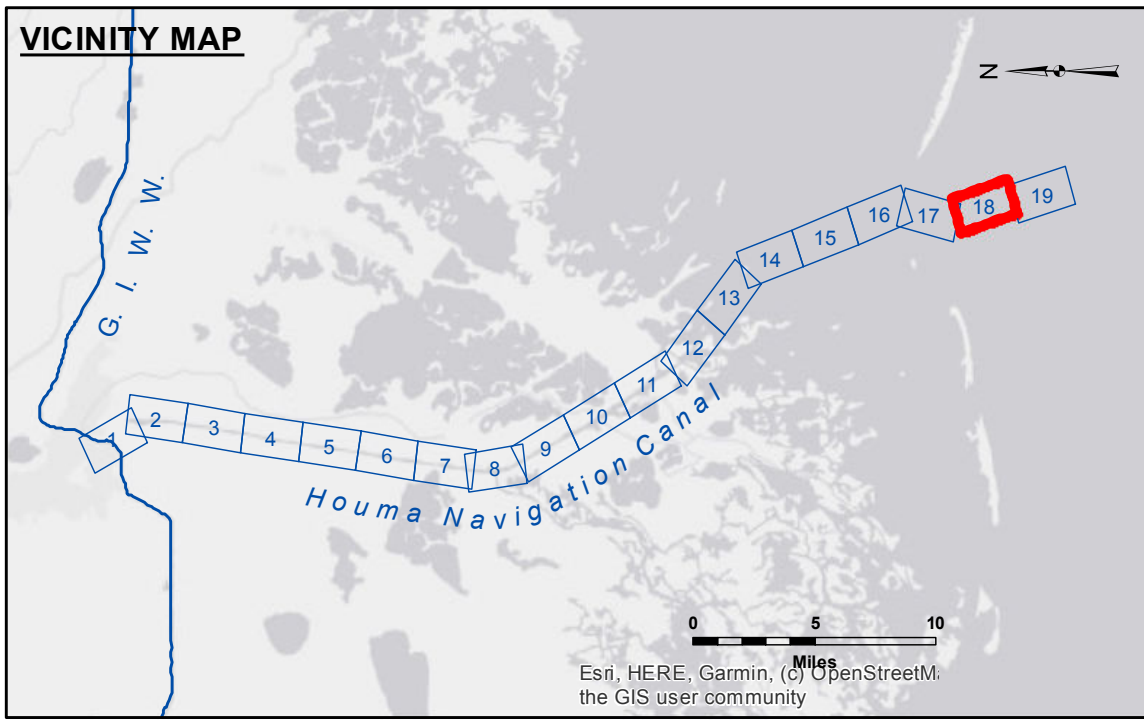
**Accession:** The data represents the results of data collection/processing for a specific US Army Corps of Engineers project. The data is only valid for its intended use, and its accuracy is only as good as the data and the methods used to collect it. The user is responsible for the results of any application of the data for other than its intended purpose.

**Disclaimer:** Hydrographic survey data is subject to change rapidly due to several factors including but not limited to dredging, sedimentation, and changes in the hydrographical conditions which develop after the date of the survey. The US Army Corps of Engineers accepts no responsibility for changes in the hydrographical conditions which develop after the date of the survey. Product maintainers should not rely solely on this information for navigation purposes.

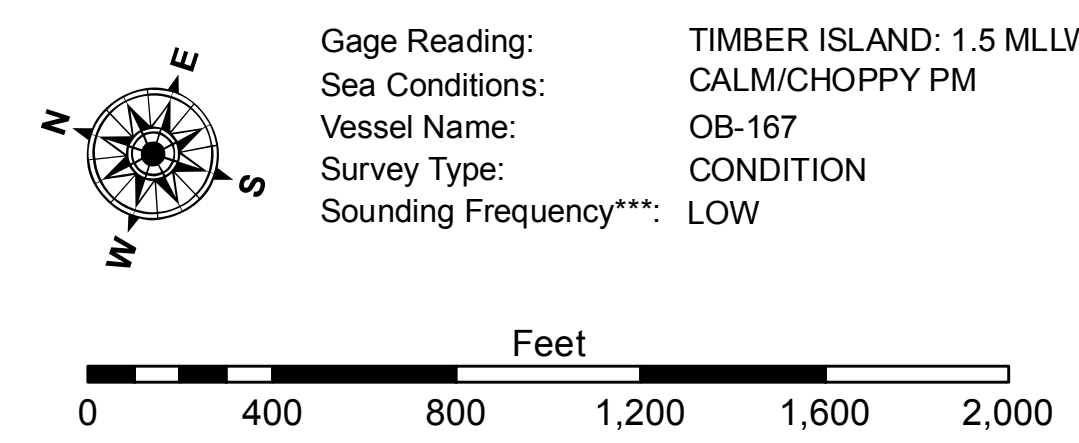
**Accession:** The United States Government furnishes the express warranty, or implied warranty, of accuracy, completeness, reliability, usability, or suitability for any particular purpose of the data. The user is responsible for the results of any application of the data for other than its intended purpose. The user is responsible for the results of any application of the data for other than its intended purpose. The user is responsible for the results of any application of the data for other than its intended purpose.

U.S. ARMY CORPS OF ENGINEERS NEW ORLEANS DISTRICT	
Surveyed By: PMS/PS	Plotted By: BD
Submitted:	Checked By: AC
Recommended: Chief, Survey Section	Approved: Chief, Waterways Maintenance Section

**HOUMA NAVIGATION CANAL  
BAR CHANNEL  
HN\_18\_BAR\_20220324\_CS\_MLLW  
24 March 2022**



LEGEND			
--- Federal Navigation Channel	○ Cable Area	□ Borrow Area	■ -8' and above
— Federal Navigation Center Line	□ Placement Area	● Shoalest Sounding**	■ -8' to -10'
— As-built Pipeline/Cable	□ Anchorage Area	★ Beacon, General	■ -10' to -12'
..... Unconfirmed Pipeline/Cable	⊗ Obstruction Point	◆ Red Navigation Buoy	■ -12' to -16'
— Project Depth Contour	⚓ Wrecks-Submerged	◆ Green Navigation Buoy	■ -16' to -19'
			■ -19' and below



**NOTES:**  
Horizontal Coordinate System: North American Datum of 1983 (NAD83), projected to the State Plane Coordinate System (SPCS), Louisiana South Zone. Distance units in U.S. Survey Feet.  
Vertical Datum: Soundings are shown in feet and indicate depths below Mean Lower Low Water Datum (MLLW). Datum Relationships for 88450 as of September 2022: 0.0' NAVD88 (OPUS 2019) = 0.40' MLLW (2012-2016) = 1.40' MLG  
Distances on the Houma Nav. Canal are shown at 1 mile intervals.  
The location of navigation aids are base on and provided by the U.S. Coast Guard and USACE survey crews.  
2022 Aerial Photography data source: Optimal GEO, Inc.  
Reference is N.O.A.A. Navigation Chart No. 11355.  
\*\* Shoalest Sounding per Quarter per Reach.  
\*\*\* High frequency (200 kHz) survey data represents the first signal return at a sounding location and will include suspended solids, known as "fluff", if present. Low frequency (20 kHz) survey data normally penetrates through this "fluff" layer to depict elevations of consolidated bottom material. Low frequency accuracies may vary depending on channel conditions and fathometer settings.

**Sheet Reference Number  
18 of 19**

Revision Number:  
4.2-20220420