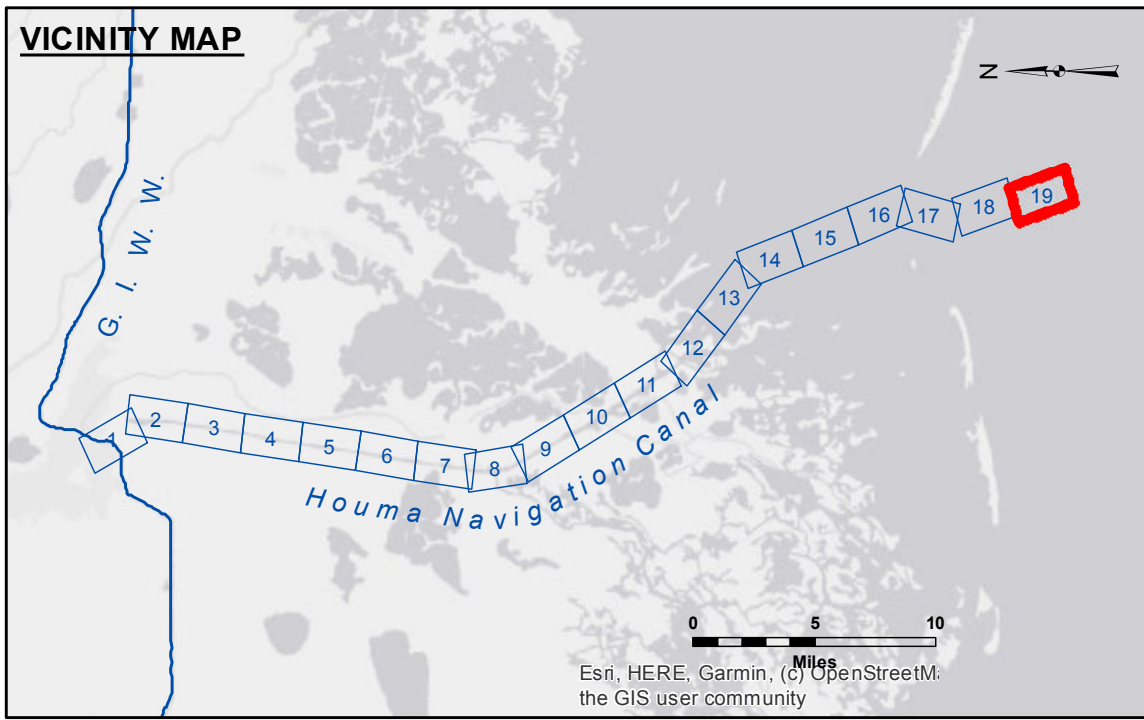


DISCLAIMER: This map represents the results of a data collection project sponsored by the U.S. Army Corps of Engineers. The data was collected using a real-time kinematic (RTK) GPS system and is only valid for its intended use, control, time and accuracy specifications. The user is responsible for the results of any application of the data for other than its intended purpose. The U.S. Army Corps of Engineers does not warrant, represent, or guarantee the accuracy of the data. The user is responsible for the results of any application of the data for other than its intended purpose. The U.S. Army Corps of Engineers does not warrant, represent, or guarantee the accuracy of the data. The user is responsible for the results of any application of the data for other than its intended purpose.

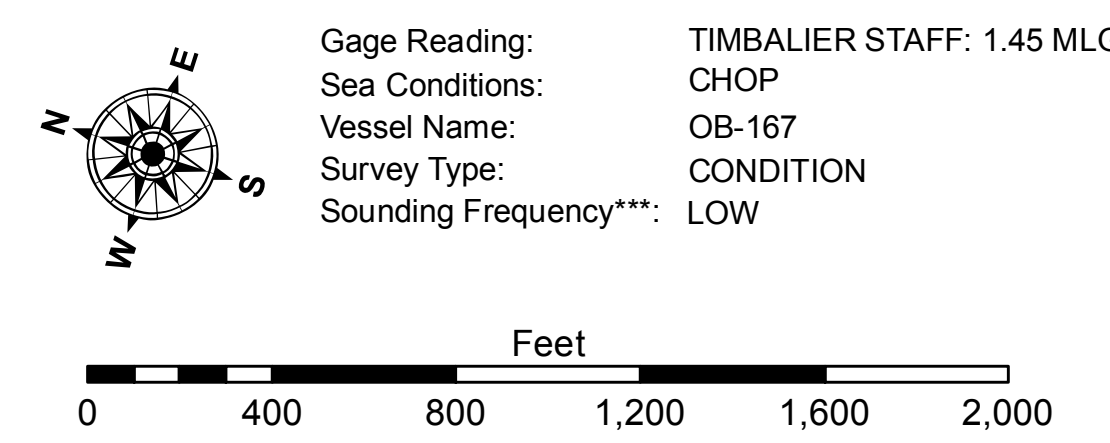
Checked By:	AC
Plotted By:	AO
Reviewed By:	SPPM
Drawn By:	AO
Checked By:	AO

U.S. ARMY CORPS OF ENGINEERS
NEW ORLEANS DISTRICT
Chief, Waterways Maintenance Section

**HOUMA NAVIGATION CANAL
BAR CHANNEL
HN_19_BAR_20210121_CS
21 January 2021**



LEGEND			
--- Federal Navigation Channel	○ Cable Area	□ Borrow Area	■ -12' and above
— Federal Navigation Center Line	□ Placement Area	● Shoalest Sounding**	■ -12' to -15'
— As-built Pipeline/Cable	□ Anchorage Area	★ Beacon, General	■ -15' to -18'
..... Unconfirmed Pipeline/Cable	⊗ Obstruction Point	◆ Red Navigation Buoy	■ -18' and below
— Project Depth Contour	✙ Wrecks-Submerged	◆ Green Navigation Buoy	



NOTES:
Horizontal Coordinate System:
North American Datum of 1983 (NAD83), projected to the State Plane Coordinate System (SPCS), Louisiana South Zone. Distance units in U.S. Survey Feet.
Vertical Datum:
Soundings are shown in feet and indicate depths below Mean Low Gulf Datum (MLG).
Datum Relationships for 76305 as of August 2014:
0.0' NAVD88 (OPUS 2010) = 0.42' MLLW (2007-2011) = 1.34' MLG
Distances on the Houma Nav. Canal are shown at 1 mile intervals.
The location of navigation aids are base on and provided by the U.S. Coast Guard and USACE survey crews.
2015 Aerial Photography data source: NAIP
Reference is N.O.A.A. Navigation Chart No. 11355.
** Shoalest Sounding per Quarter per Reach.
*** High frequency (200 kHz) survey data represents the first signal return at a sounding location and will include suspended solids, known as "fluff", if present. Low frequency (20 kHz) survey data normally penetrates through this "fluff" layer to depict elevations of consolidated bottom material. Low frequency accuracies may vary depending on channel conditions and fathometer settings.

**Sheet Reference Number
19 of 19**