

US Army Corps of Engineers District: CEMV

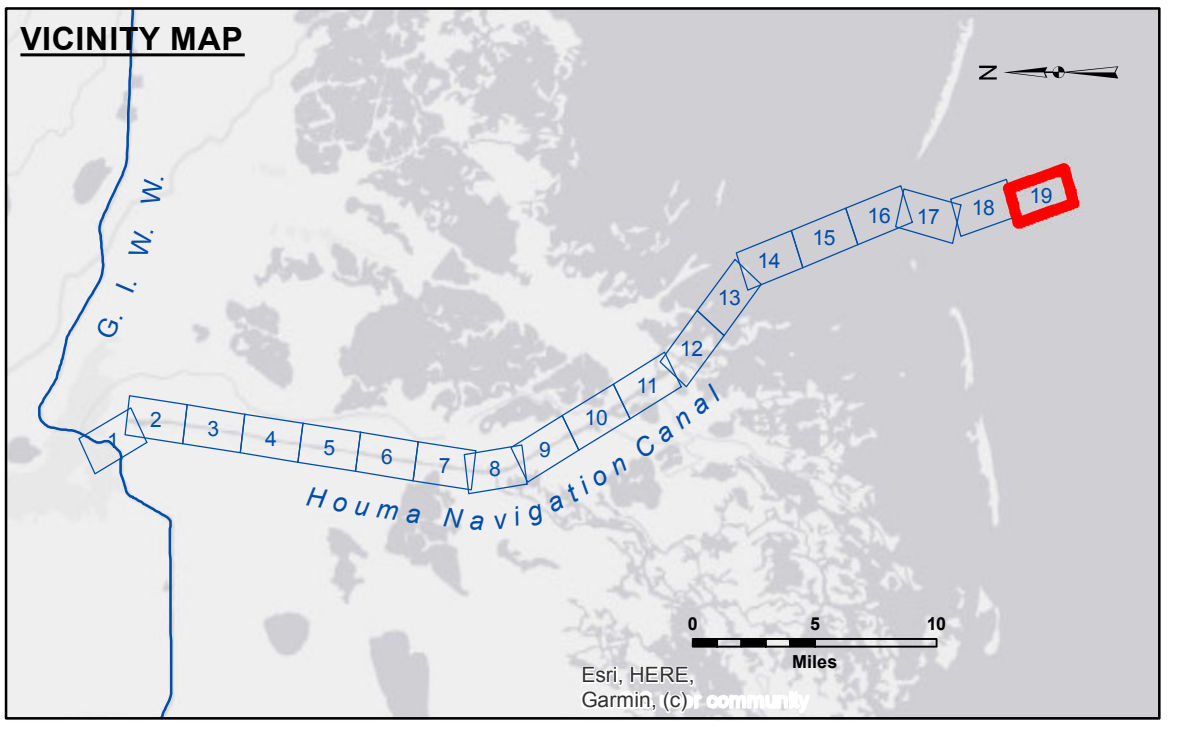
Distribution Liability: The data represents the results of data collection/processing for a specific US Army Corps of Engineers project. It is only valid for its intended use, content, time and accuracy specifications. The user is responsible for the results. Application of the data for other than its intended purpose. Data Constants: Hydrographic survey data is subject to change rapidly due to several factors including but not limited to dredging, accretion, and other channel changes. The user is responsible for the data. The hydrographical conditions which develop after the date of the survey are not represented by this data. Product maintainers should not rely solely upon it.

Checked By: AC	Chief, Waterways Maintenance Section
Plotted By: AC	Chief, Survey Section
Reviewed By: David Evans and Associates	Surveyors

U.S. ARMY CORPS OF ENGINEERS
NEW ORLEANS DISTRICT

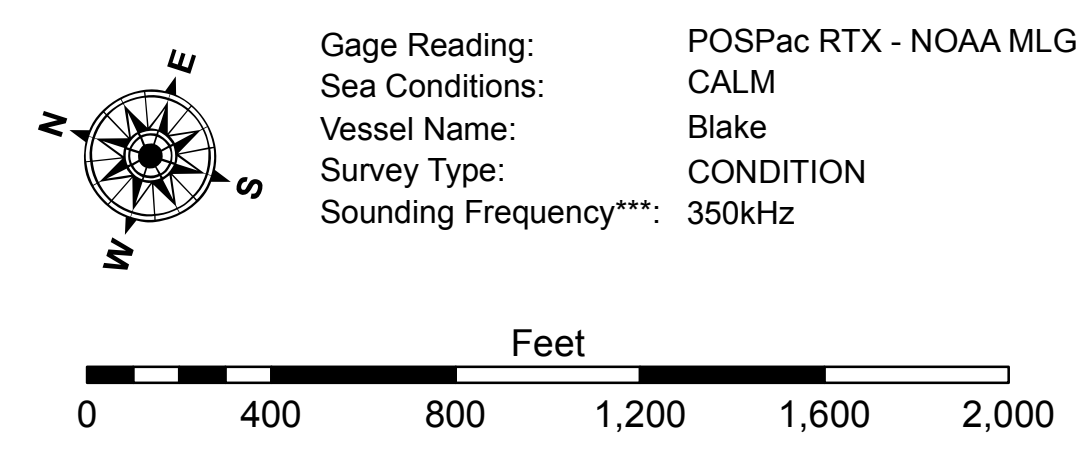
**HOUMA NAVIGATION CANAL
BAR CHANNEL
HN_19_BAR_20210904_CS_POSTIDA
04 September 2021**

**Sheet Reference Number
19 of 19**



LEGEND

--- Federal Navigation Channel	○ Cable Area	□ Borrow Area	■ -12' and above
— Federal Navigation Center Line	□ Placement Area	● Shoalest Sounding**	■ -12' to -15'
— As-built Pipeline/Cable	□ Anchorage Area	★ Beacon, General	■ -15' to -18'
..... Unconfirmed Pipeline/Cable	⊗ Obstruction Point	◆ Red Navigation Buoy	■ -18' and below
— Project Depth Contour	✶ Wrecks-Submerged	◆ Green Navigation Buoy	



NOTES:
 Horizontal Coordinate System: North American Datum of 1983 (NAD83), projected to the State Plane Coordinate System (SPCS), Louisiana South Zone. Distance units in U.S. Survey Feet.
 Soundings are shown in feet and indicate depths below Mean Low Gulf Datum (MLG). Datum Relationships for 76305 as of August 2014:
 0.0' NAVD88 (OPUS 2010) = 0.42' MLLW (2007-2011) = 1.34' MLG
 Distances on the Houma Nav. Canal are shown at 1 mile intervals.
 The location of navigation aids are base on and provided by the U.S. Coast Guard and USACE survey crews.
 2015 Aerial Photography data source: NAIP
 Reference is N.O.A.A. Navigation Chart No. 11355.
 ** Shoalest Sounding per Quarter per Reach.
 *** High frequency (200 kHz) survey data represents the first signal return at a sounding location and will include suspended solids, known as "fluff", if present. Low frequency (20 kHz) survey data normally penetrates through this "fluff" layer to depict elevations of consolidated bottom material. Low frequency accuracies may vary depending on channel conditions and fathometer settings.