

**US Army Corps of Engineers District: CEMVN**

**Access/Use:** The United States Government furnishes these data and the recipient accepts and uses them with the express understanding that the data are not to be used for any purpose other than that for which they were originally prepared, and that the user is responsible for the results of any use of the data for other than its intended purpose.

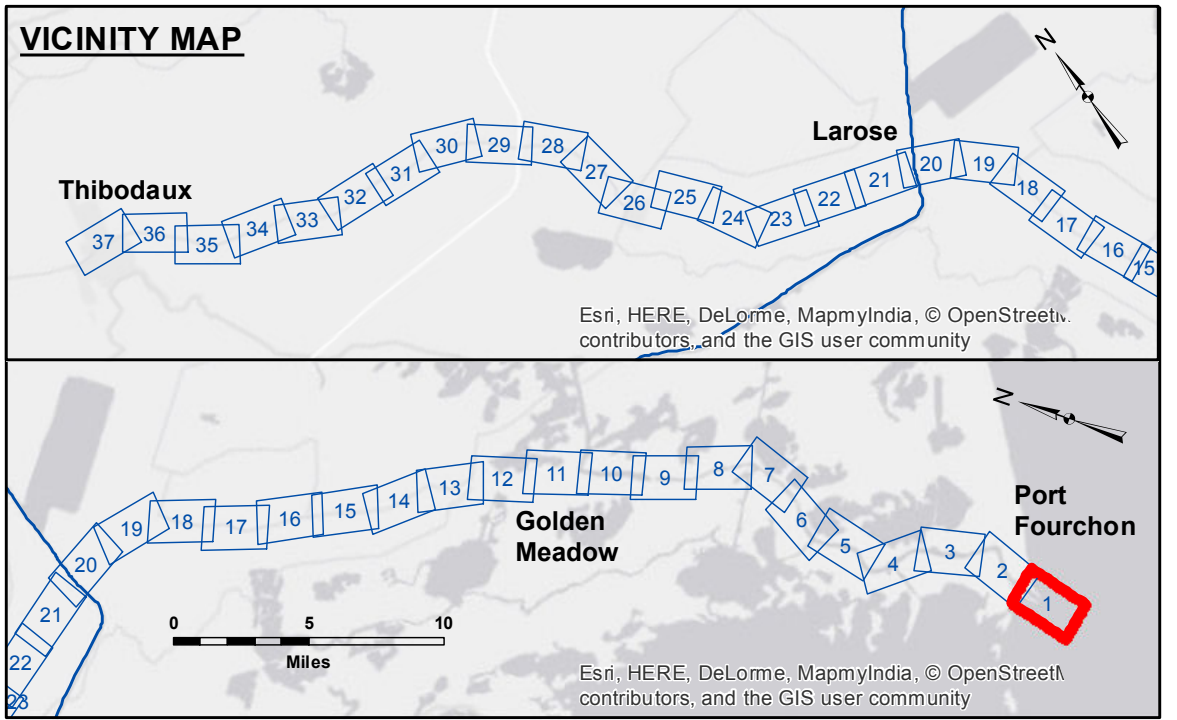
**Distribution Liability:** The data represent the results of data collection processing for a specific US Army Corps of Engineers project. The data are not to be used for any purpose other than that for which they were originally prepared, and that the user is responsible for the results of any use of the data for other than its intended purpose.

**Data Constants:** Hydrographic survey data is subject to change rapidly due to several factors including but not limited to dredging, sedimentation, and changes in bathymetry. The user is responsible for the results of any use of the data for other than its intended purpose.

**Disclaimer:** The information depicted on this map represents the results of a survey conducted on the date of the survey. It is not intended to represent the general condition existing at that time.

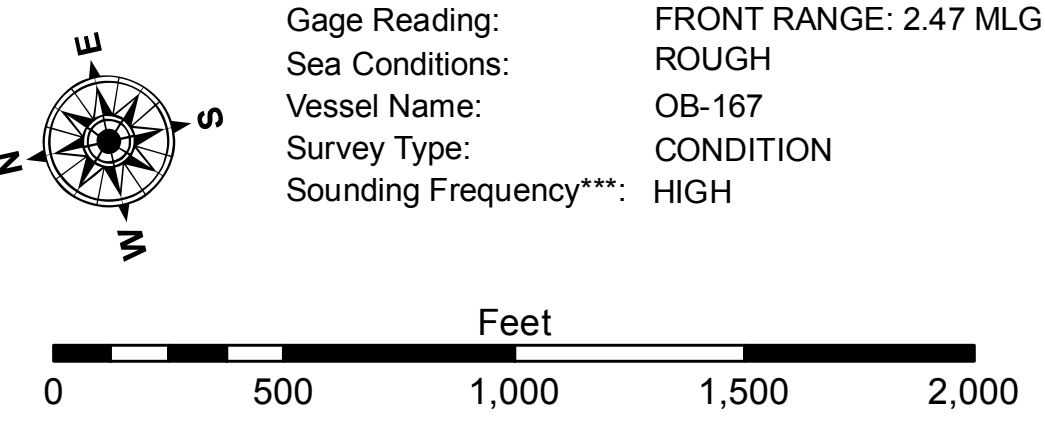
U.S. ARMY CORPS OF ENGINEERS NEW ORLEANS DISTRICT	
Submitted:	Surveyed By: SPPM
Recommended: Chief, Survey Section	Plotted By: BD
Approved: Chief, Waterways Maintenance Section	Checked By: AC

**BAYOU LAFOURCHE  
BAR CHANNEL  
LF\_01\_BAR\_20161018  
18 October 2016**



**LEGEND**

--- Federal Navigation Channel	○ Cable Area	□ Borrow Area	■ -16' and above
— Federal Navigation Center Line	□ Placement Area	● Shoalest Sounding**	■ -16' to -24'
— As-built Pipeline/Cable	□ Anchorage Area	★ Beacon, General	■ -24' and below
..... Unconfirmed Pipeline/Cable	⊗ Obstruction Point	◆ Red Navigation Buoy	
— Project Depth Contour	⚓ Wrecks-Submerged	◆ Green Navigation Buoy	



**NOTES:**  
 Horizontal Coordinate System:  
 North American Datum of 1983 (NAD83), projected to the State Plane Coordinate System (SPCS), Louisiana South Zone. Distance units in U.S. Survey Feet.

Vertical Datum:  
 Soundings are shown in feet and indicate depths below Mean Low Gulf Datum (MLG).  
 Datum Relationships for Harbor Police Dock Staff as of August 2014:  
 0.0' NAVD88 (OPUS2011) = 0.61' MLLW (1983-2001) = 1.67' MLG

Distances on the Bayou Lafourche are shown at 1 mile intervals.

The location of navigation aids are based on and provided by the U.S. Coast Guard and USACE survey crews.

2013 Aerial Photography data source: GEOCLIP, 1998 DOQQ shown in transparent green.

Reference is N.O.A. Navigation Chart No. 11365 and 11346.

\*\* Shoalest Sounding per Quarter per Reach.

\*\*\* High frequency (200 kHz) survey data represents the first signal return at a sounding location and will include suspended solids, known as "fluff", if present. Low frequency (20 kHz) survey data normally penetrates through this "fluff" layer to depict elevations of consolidated bottom material. Low frequency accuracies may vary depending on channel conditions and fathometer settings.

**Sheet Reference Number**  
**1 of 37**

Revision Number:  
 3.8.9-20150202