

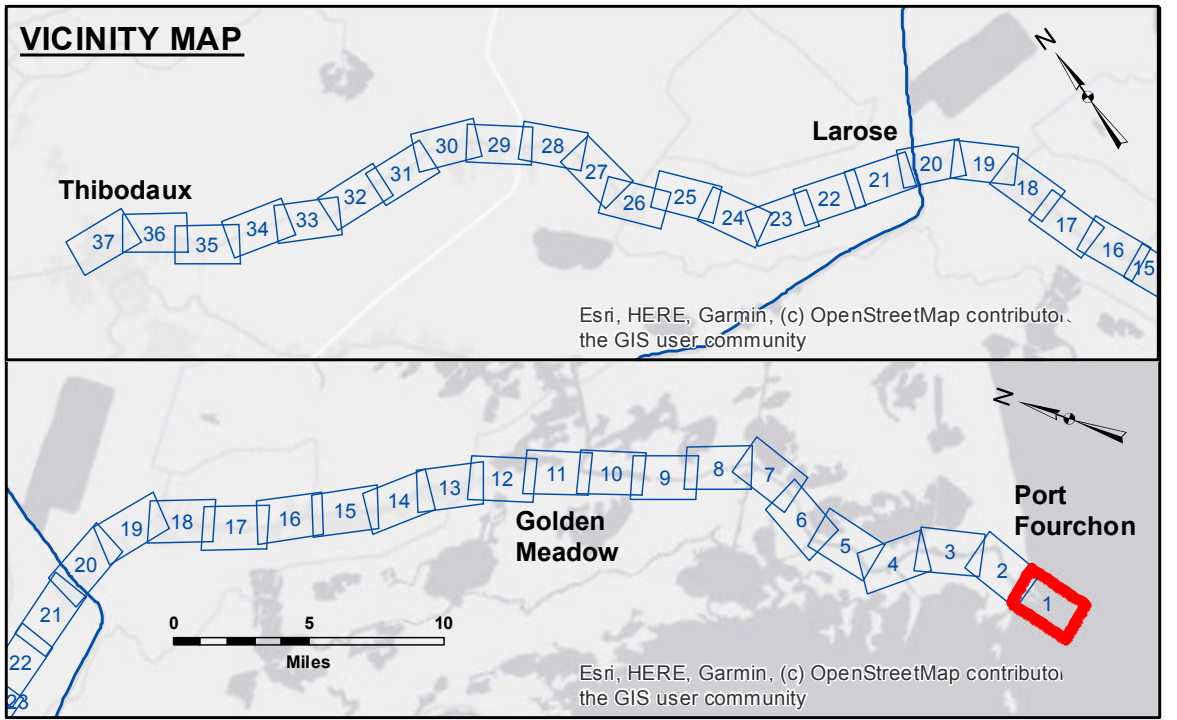
DISCLAIMER
 The information depicted on this map represents the results of a survey conducted by the United States Army Corps of Engineers. The user is responsible for the accuracy, completeness, and reliability of the data for its intended use. The user is not to be held liable for any damages, including but not limited to, property damage, personal injury, or death, resulting from the use of this information. The user is to be held liable for any damages, including but not limited to, property damage, personal injury, or death, resulting from the use of this information. The user is to be held liable for any damages, including but not limited to, property damage, personal injury, or death, resulting from the use of this information.

Submitted:	Surveyed By: SPPM
Recommended: Chief, Survey Section	Plotted By: AO
Approved: Chief, Waterways Maintenance Section	Checked By: AO

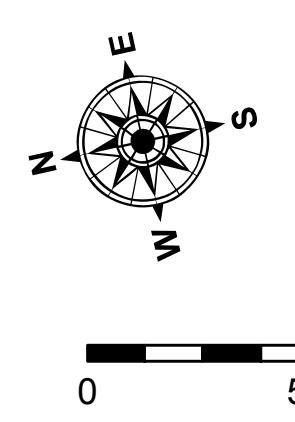
**BAYOU LAFOURCHE
 BAR CHANNEL
 LF_01_BAR_20200610_CS_POSTSTORM
 10 June 2020**

**Sheet
 Reference
 Number
 1 of 37**

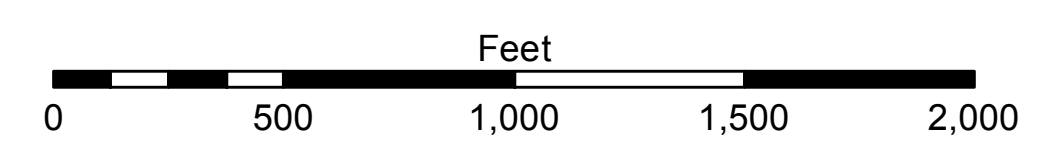
Revision Number:
 4.1-20191105



LEGEND			
--- Federal Navigation Channel	○ Cable Area	□ Borrow Area	■ -16' and above
— Federal Navigation Center Line	■ Placement Area	● Shoalest Sounding**	■ -16' to -24'
— As-built Pipeline/Cable	□ Anchorage Area	★ Beacon, General	■ -24' and below
..... Unconfirmed Pipeline/Cable	⊗ Obstruction Point	◆ Red Navigation Buoy	
— Project Depth Contour	⚓ Wrecks-Submerged	◆ Green Navigation Buoy	



Gage Reading: FRONT RANGE: 3.57 MLG
 Sea Conditions: 3FT TO 6FT SWELLS
 Vessel Name: OB-167
 Survey Type: CONDITION
 Sounding Frequency***: HIGH



NOTES:
 Horizontal Coordinate System:
 North American Datum of 1983 (NAD83), projected to the State Plane
 Coordinate System (SPCS), Louisiana South Zone. Distance units in U.S. Survey Feet.
 Vertical Datum:
 Soundings are shown in feet and indicate depths below Mean Low Gulf Datum (MLG).
 Datum Relationships for Harbor Police Dock Staff as of August 2014:
 0.0' NAVD88 (OPUS2011) = 0.61' MLLW (1983-2001) = 1.67' MLG
 Distances on the Bayou Lafourche are shown at 1 mile intervals.
 The location of navigation aids are base on and provided by the U.S. Coast Guard
 and USACE survey crews.
 2015 Aerial Photography data source: NAIP
 Reference is N.O.A. Navigation Chart No. 11365 and 11346.
 ** Shoalest Sounding per Quarter per Reach.
 *** High frequency (200 kHz) survey data represents the first signal return at a sounding
 location and will include suspended solids, known as "fluff", if present. Low frequency (20 kHz)
 survey data normally penetrates through this "fluff" layer to depict elevations of consolidated bottom
 material. Low frequency accuracies may vary depending on channel conditions and fathometer
 settings.