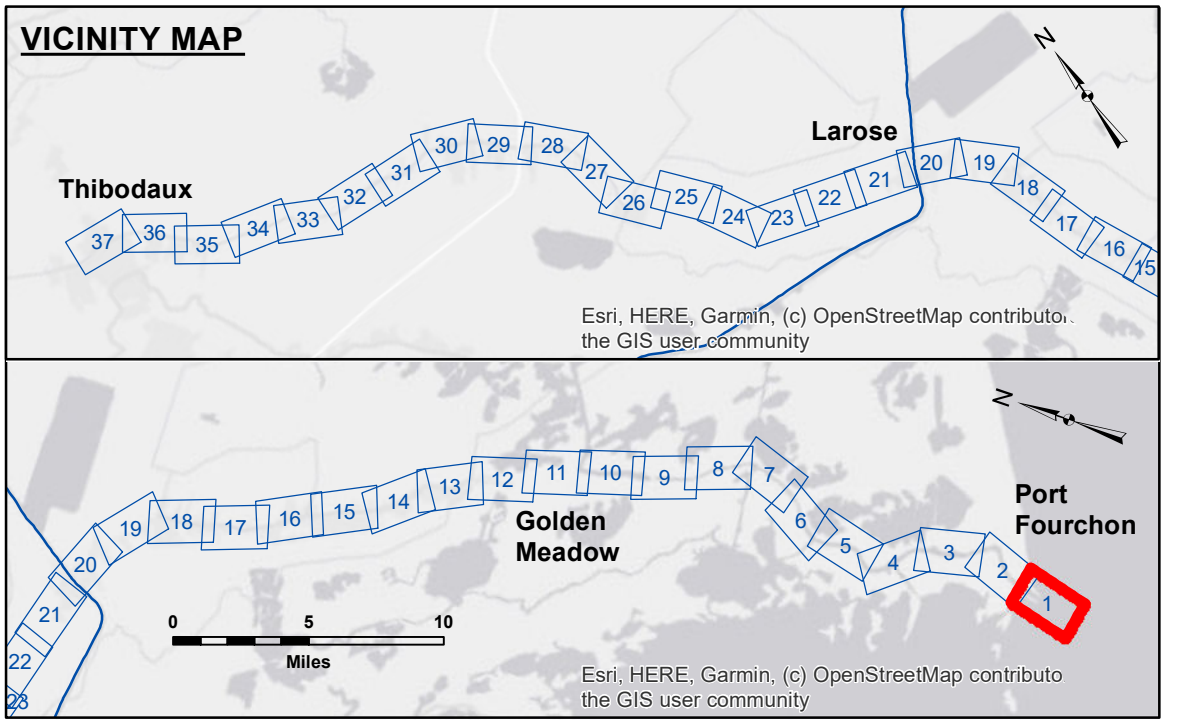


**DISCLAIMER**  
 The United States Government furnishes these data and the recipient accepts and uses them with the express understanding that the data are not warranted for any purpose other than that for which they were collected. The user is responsible for the results of any use of the data for other than the intended purpose. The user is responsible for the results of any use of the data for other than the intended purpose. The user is responsible for the results of any use of the data for other than the intended purpose. The user is responsible for the results of any use of the data for other than the intended purpose.

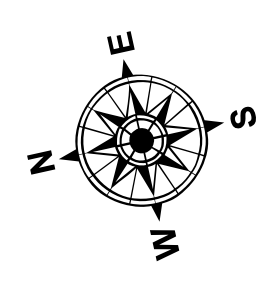
U.S. ARMY CORPS OF ENGINEERS NEW ORLEANS DISTRICT		
Submitted:	Surveyed By: PML/KC	Plotted By: JH
Recommended:	Chief, Survey Section	Checked By: JH
Approved:	Chief, Waterways Maintenance Section	

**BAYOU LAFOURCHE  
 BAR CHANNEL  
 LF\_01\_BAR\_20240925\_CS  
 25 September 2024**



**LEGEND**

--- Federal Navigation Channel	○ Cable Area	□ Borrow Area	■ -16' and above
— Federal Navigation Center Line	□ Placement Area	● Shoalest Sounding**	■ -16' to -24'
— As-built Pipeline/Cable	□ Anchorage Area	★ Beacon, General	■ -24' and below
..... Unconfirmed Pipeline/Cable	⊗ Obstruction Point	◆ Red Navigation Buoy	
— Project Depth Contour	✙ Wrecks-Submerged	◆ Green Navigation Buoy	



Gage Reading: FRONT RANGE / REAR RANGE: 2.17 MLG AV  
 Sea Conditions: CALM/CHOPPY  
 Vessel Name: DUCARPE  
 Survey Type: CONDITION  
 Sounding Frequency\*\*\*: 200

Feet  
 0 500 1,000 1,500 2,000

**NOTES:**  
 Horizontal Coordinate System: North American Datum of 1983 (NAD83), projected to the State Plane Coordinate System (SPCS), Louisiana South Zone. Distance units in U.S. Survey Feet.  
 Vertical Datum: Mean Low Gulf Datum (MLG).  
 Soundings are shown in feet and indicate depths below Mean Low Gulf Datum (MLG). Datum Relationships for Harbor Police Dock Staff as of August 2014: 0.0' NAVD88 (OPUS2011) = 0.61' MLLW (1983-2001) = 1.67' MLG  
 Distances on the Bayou Lafourche are shown at 1 mile intervals.  
 The location of navigation aids are base on and provided by the U.S. Coast Guard and USACE survey crews.  
 2015 Aerial Photography data source: NAIP  
 Reference is N.O.A. Navigation Chart No. 11365 and 11346.  
 \*\* Shoalest Sounding per Quarter per Reach.  
 \*\*\* High frequency (200 kHz) survey data represents the first signal return at a sounding location and will include suspended solids, known as "fluff", if present. Low frequency (20 kHz) survey data normally penetrates through this "fluff" layer to depict elevations of consolidated bottom material. Low frequency accuracies may vary depending on channel conditions and fathometer settings.

**Sheet Reference Number  
 1 of 37**

Revision Number:  
 4-2-2024(0428)