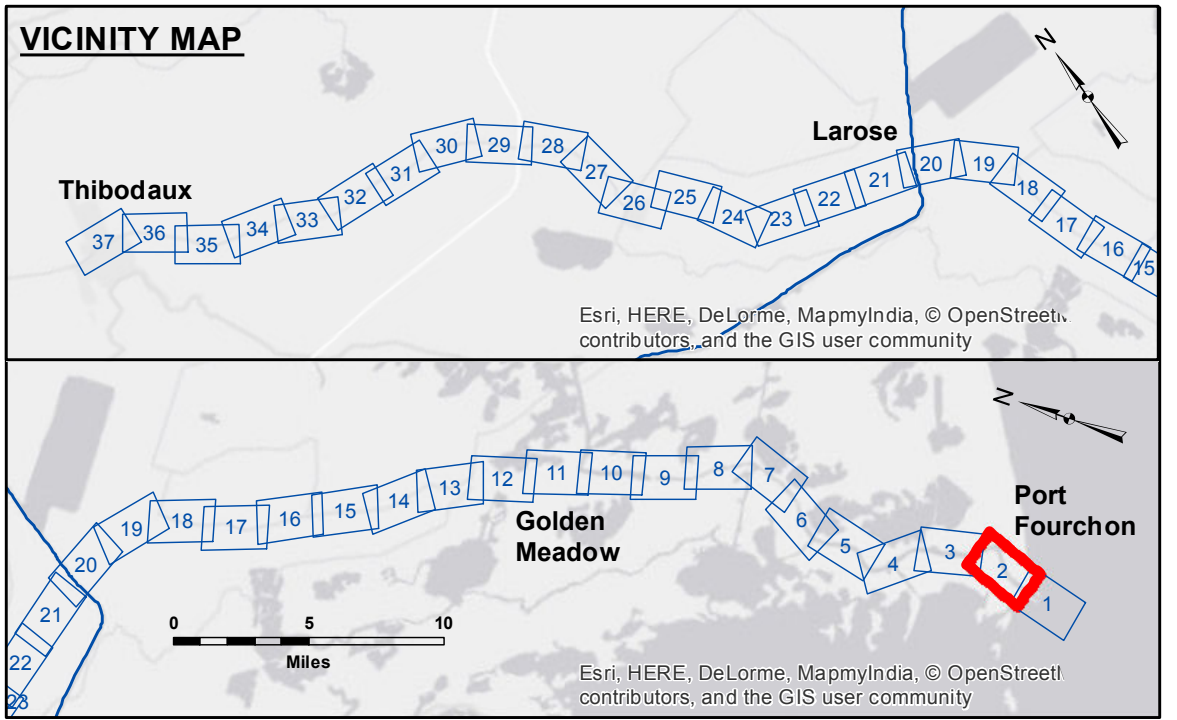


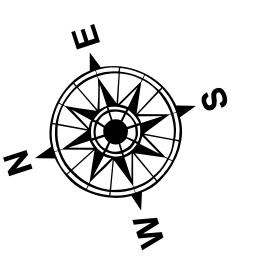
DISCLAIMER
 The information depicted on this map represents the results of a survey conducted by the United States Army Corps of Engineers. The user is responsible for the accuracy, completeness, reliability, usability, or suitability of the data for any purpose other than that intended. The user is responsible for the results of any use of the data for other than its intended purpose. The user is responsible for the results of any use of the data for other than its intended purpose. The user is responsible for the results of any use of the data for other than its intended purpose. The user is responsible for the results of any use of the data for other than its intended purpose.

Submitted:	Surveyed By:	SPPM
Recommended:	Plotted By:	BTD
Approved:	Chief, Survey Section	RL
	Chief, Waterways Maintenance Section	

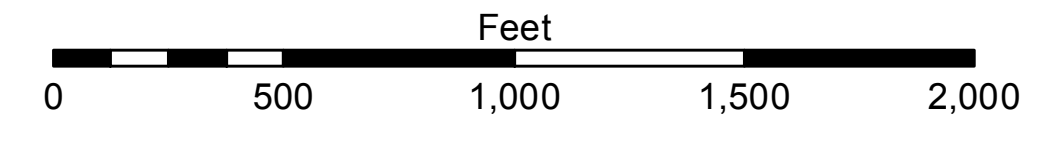
**BAYOU LAFOURCHE
 WEST BELLE PASS
 LF_02_LWR_20160406
 06 April 2016**



LEGEND			
--- Federal Navigation Channel	○ Cable Area	□ Borrow Area	-16' and above
— Federal Navigation Center Line	□ Placement Area	● Shoalest Sounding**	-16' to -24'
— As-built Pipeline/Cable	□ Anchorage Area	★ Beacon, General	-24' and below
..... Unconfirmed Pipeline/Cable	⊗ Obstruction Point	◆ Red Navigation Buoy	
— Project Depth Contour	⚓ Wrecks-Submerged	◆ Green Navigation Buoy	



Gage Reading: FRONT RANGE: 2.17 MLG
 Sea Conditions: CALM
 Vessel Name: OB-167
 Survey Type: CONDITION
 Sounding Frequency***: LOW



NOTES:
 Horizontal Coordinate System:
 North American Datum of 1983 (NAD83), projected to the State Plane Coordinate System (SPCS), Louisiana South Zone. Distance units in U.S. Survey Feet.
 Vertical Datum:
 Soundings are shown in feet and indicate depths below Mean Low Gulf Datum (MLG).
 Datum Relationships for Harbor Police Dock Staff as of August 2014:
 0.0' NAVD88 (OPUS2011) = 0.61' MLW (1983-2001) = 1.87' MLG
 Distances on the Bayou Lafourche are shown at 1 mile intervals.
 The location of navigation aids are based on and provided by the U.S. Coast Guard and USACE survey crews.
 2013 Aerial Photography data source: GEOCLIP, 1998 DOQQ shown in transparent green.
 Reference is N.O.A.A. Navigation Chart No. 11365 and 11346.
 ** Shoalest Sounding per Quarter per Reach.
 *** High frequency (200 kHz) survey data represents the first signal return at a sounding location and will include suspended solids, known as "fluff", if present. Low frequency (20 kHz) survey data normally penetrates through this "fluff" layer to depict elevations of consolidated bottom material. Low frequency accuracies may vary depending on channel conditions and fathometer settings.

**Sheet Reference Number
 2 of 37**