

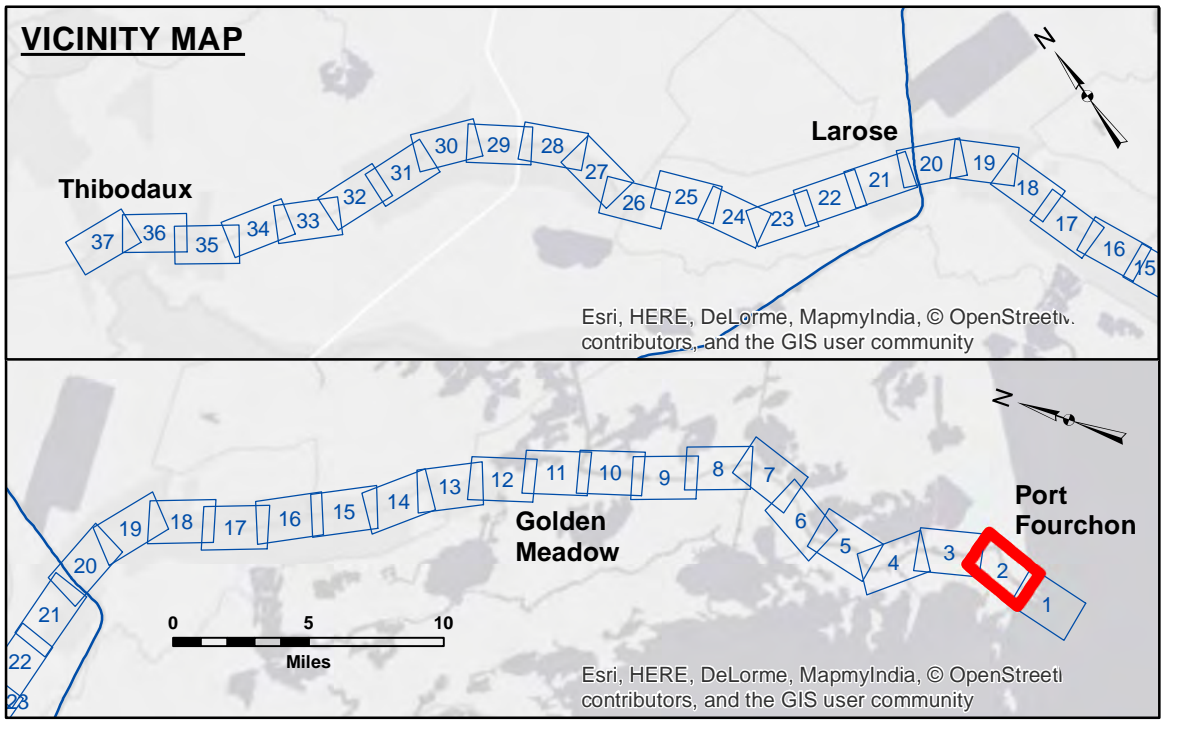
US Army Corps of Engineers District: CEMVN

Access/Use: The United States Government furnishes these data and the recipient accepts and uses them with the express understanding that they are for informational purposes only. It is not to be used for any purpose other than that for which it was prepared, or implied concerning the accuracy, completeness, reliability, usability or suitability for any particular purpose of the recipient. The user is responsible for the results of any use of these data. The recipient agrees to indemnify and hold the United States Government harmless from any and all claims, damages, losses, and expenses, including reasonable attorneys' fees, that may be incurred by the United States Government as a result of the recipient's use of these data.

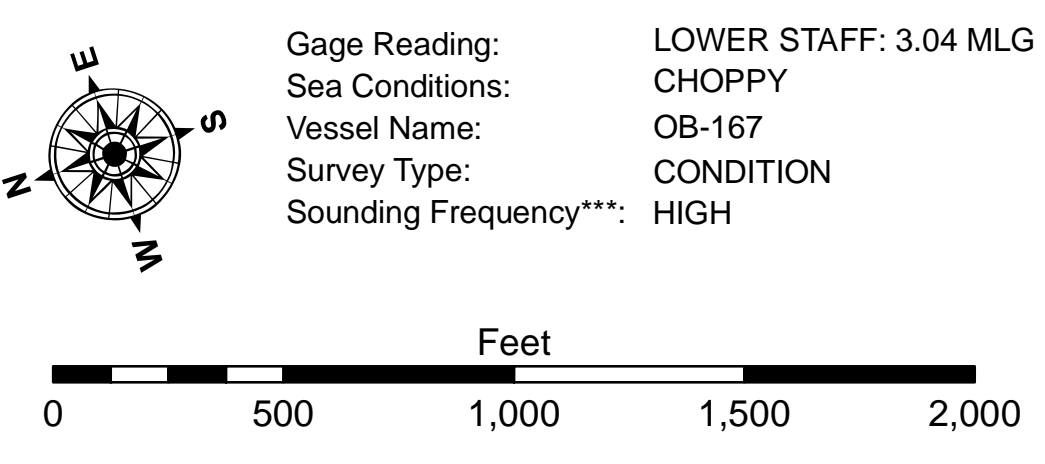
Data Constraints: Hydrographic survey data is subject to change rapidly due to several factors including but not limited to changing bathymetry, sedimentation, and other factors. The recipient agrees to accept the data as provided and to be responsible for changes in the hydrographical conditions which develop after the date of the survey. The recipient agrees to accept the data as provided and to be responsible for changes in the hydrographical conditions which develop after the date of the survey. The recipient agrees to accept the data as provided and to be responsible for changes in the hydrographical conditions which develop after the date of the survey.

U.S. ARMY CORPS OF ENGINEERS NEW ORLEANS DISTRICT		
Submitted:	Surveyed By: RYLAND/RHODEN	Plotted By: BD
Recommended:	Chart, Survey Section	Checked By: AC
Approved:	Chart, Waterways Maintenance Section	

**BAYOU LAFOURCHE
WEST BELLE PASS
LF_02_LWR_20180403_CS
03 April 2018**



LEGEND			
--- Federal Navigation Channel	○ Cable Area	□ Borrow Area	■ -16' and above
— Federal Navigation Center Line	□ Placement Area	● Shoalest Sounding**	■ -16' to -24'
— As-built Pipeline/Cable	□ Anchorage Area	★ Beacon, General	■ -24' and below
..... Unconfirmed Pipeline/Cable	⊗ Obstruction Point	◆ Red Navigation Buoy	
— Project Depth Contour	⚓ Wrecks-Submerged	◆ Green Navigation Buoy	



NOTES:
Horizontal Coordinate System:
North American Datum of 1983 (NAD83), projected to the State Plane Coordinate System (SPCS), Louisiana South Zone. Distance units in U.S. Survey Feet.

Vertical Datum:
Soundings are shown in feet and indicate depths below Mean Low Gulf Datum (MLG).
Datum Relationships for Harbor Police Dock Staff as of August 2014:
0.0' NAVD88 (OPUS2011) = 0.61' MLLW (1983-2001) = 1.87' MLG

Distances on the Bayou Lafourche are shown at 1 mile intervals.

The location of navigation aids are base on and provided by the U.S. Coast Guard and USACE survey crews.

2015 Aerial Photography data source: NAIP

Reference is N.O.A. Navigation Chart No. 11365 and 11346.

** Shoalest Sounding per Quarter per Reach.

*** High frequency (200 kHz) survey data represents the first signal return at a sounding location and will include suspended solids, known as "fluff", if present. Low frequency (20 kHz) survey data normally penetrates through this "fluff" layer to depict elevations of consolidated bottom material. Low frequency accuracies may vary depending on channel conditions and fathometer settings.

**Sheet Reference Number
2 of 37**

Revision Number:
3.12-2016R11