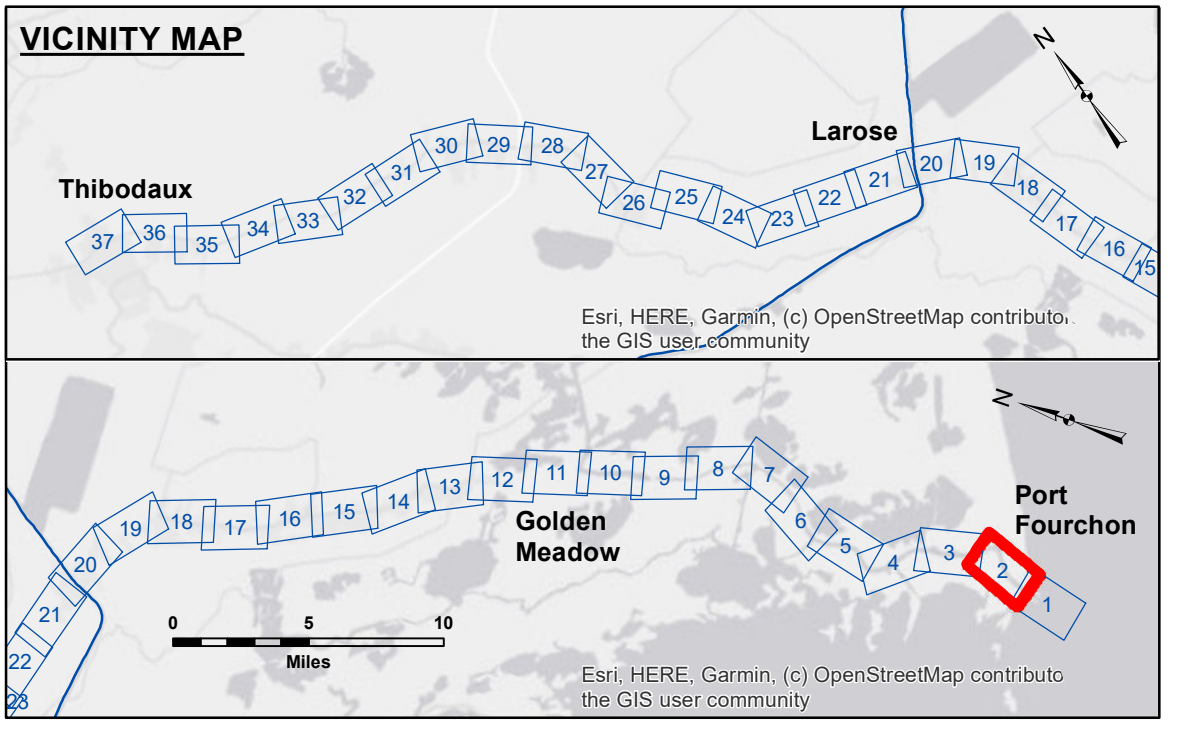


DISCLAIMER
 The information depicted on this map represents the results of a survey conducted by the U.S. Army Corps of Engineers. It is only valid for its intended use, content, time and accuracy specifications. The user is responsible for the results of any use of this information for purposes other than those intended. The user is responsible for the results of any use of this information for purposes other than those intended. The user is responsible for the results of any use of this information for purposes other than those intended. The user is responsible for the results of any use of this information for purposes other than those intended.

Submitted:	Surveyed By:	Plotted By:	Checked By:
Chart, Survey Section	PM, JA	BD	ADJH
Recommended:	Checked:	Approved:	
Chart, Survey Section	Chart, Survey Section	Chart, Waterways Maintenance Section	

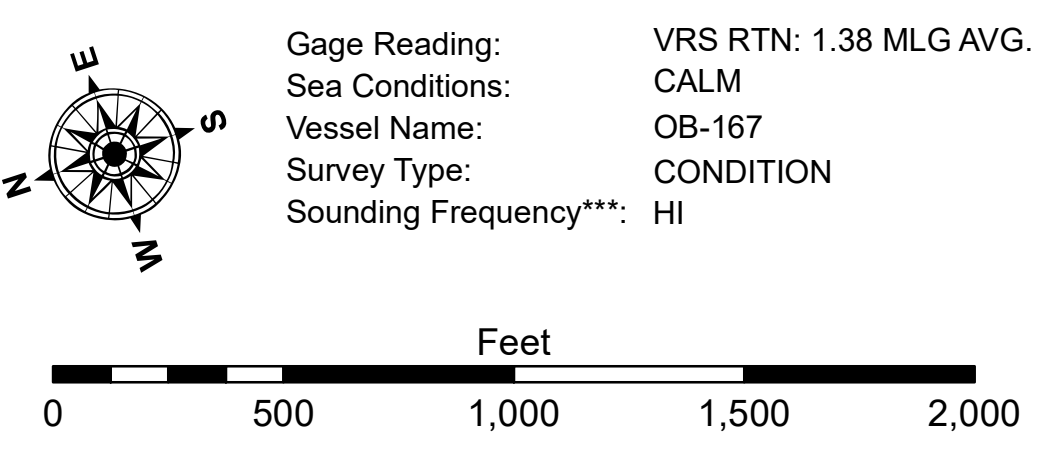
**BAYOU LAFOURCHE
 WEST BELLE PASS
 LF_02_LWR_20230127_AD
 27 January 2023**

**Sheet Reference Number
 2 of 37**



LEGEND

--- Federal Navigation Channel	○ Cable Area	□ Borrow Area	■ -16' and above
— Federal Navigation Center Line	□ Placement Area	● Shoalest Sounding**	■ -16' to -24'
— As-built Pipeline/Cable	□ Anchorage Area	☆ Beacon, General	■ -24' and below
..... Unconfirmed Pipeline/Cable	⊗ Obstruction Point	◆ Red Navigation Buoy	
— Project Depth Contour	⚓ Wrecks-Submerged	◆ Green Navigation Buoy	



NOTES:
 Horizontal Coordinate System:
 North American Datum of 1983 (NAD83), projected to the State Plane Coordinate System (SPCS), Louisiana South Zone. Distance units in U.S. Survey Feet.
 Vertical Datum:
 Soundings are shown in feet and indicate depths below Mean Low Gulf Datum (MLG). Datum Relationships for Harbor Police Dock Staff as of August 2014:
 0.0' NAVD88 (OPUS2011) = 0.61' MLLW (1983-2001) = 1.87' MLG
 Distances on the Bayou Lafourche are shown at 1 mile intervals.
 The location of navigation aids are base on and provided by the U.S. Coast Guard and USACE survey crews.
 2015 Aerial Photography data source: NAIP
 Reference is N.O.A. Navigation Chart No. 11365 and 11346.
 ** Shoalest Sounding per Quarter per Reach.
 *** High frequency (200 kHz) survey data represents the first signal return at a sounding location and will include suspended solids, known as "fluff", if present. Low frequency (20 kHz) survey data normally penetrates through this "fluff" layer to depict elevations of consolidated bottom material. Low frequency accuracies may vary depending on channel conditions and fathometer settings.