

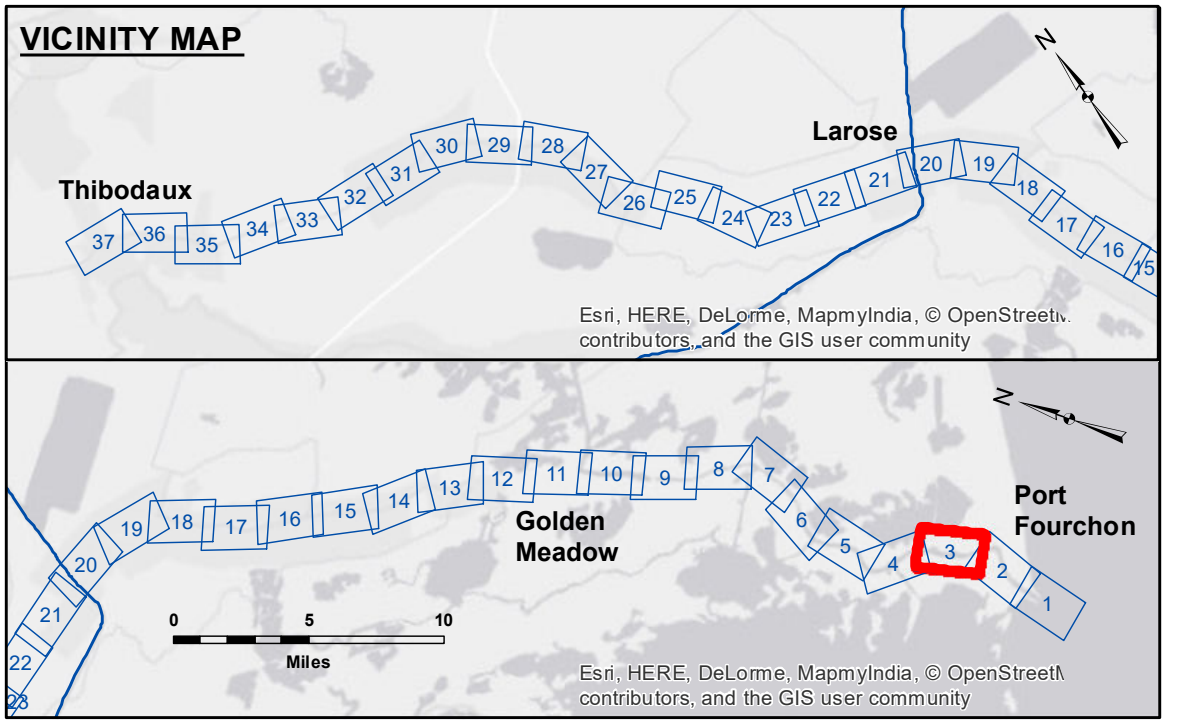
**DISCLAIMER**  
 The information depicted on this map represents the results of a survey conducted by the U.S. Army Corps of Engineers. The user is responsible for the accuracy, completeness, and reliability of the information for its intended use. The user is responsible for the accuracy, completeness, and reliability of the information for its intended use. The user is responsible for the accuracy, completeness, and reliability of the information for its intended use. The user is responsible for the accuracy, completeness, and reliability of the information for its intended use.

Submitted:	Surveyed By:	RYLAND ADAMS
Recommended:	Plotted By:	BD
Approved:	Chief, Survey Section	AC

U.S. ARMY CORPS OF ENGINEERS  
 NEW ORLEANS DISTRICT

**BAYOU LAFOURCHE  
 WEST BELLE PASS  
 LF\_03\_LWR\_20180322\_CS  
 22 March 2018**

**Sheet Reference Number  
 3 of 37**



LEGEND	
--- Federal Navigation Channel	● Cable Area
— Federal Navigation Center Line	■ Placement Area
— As-built Pipeline/Cable	□ Anchorage Area
..... Unconfirmed Pipeline/Cable	⊗ Obstruction Point
— Project Depth Contour	✶ Wrecks-Submerged
□ Borrow Area	★ Beacon, General
● Shoalest Sounding**	◆ Red Navigation Buoy
◆ Green Navigation Buoy	

