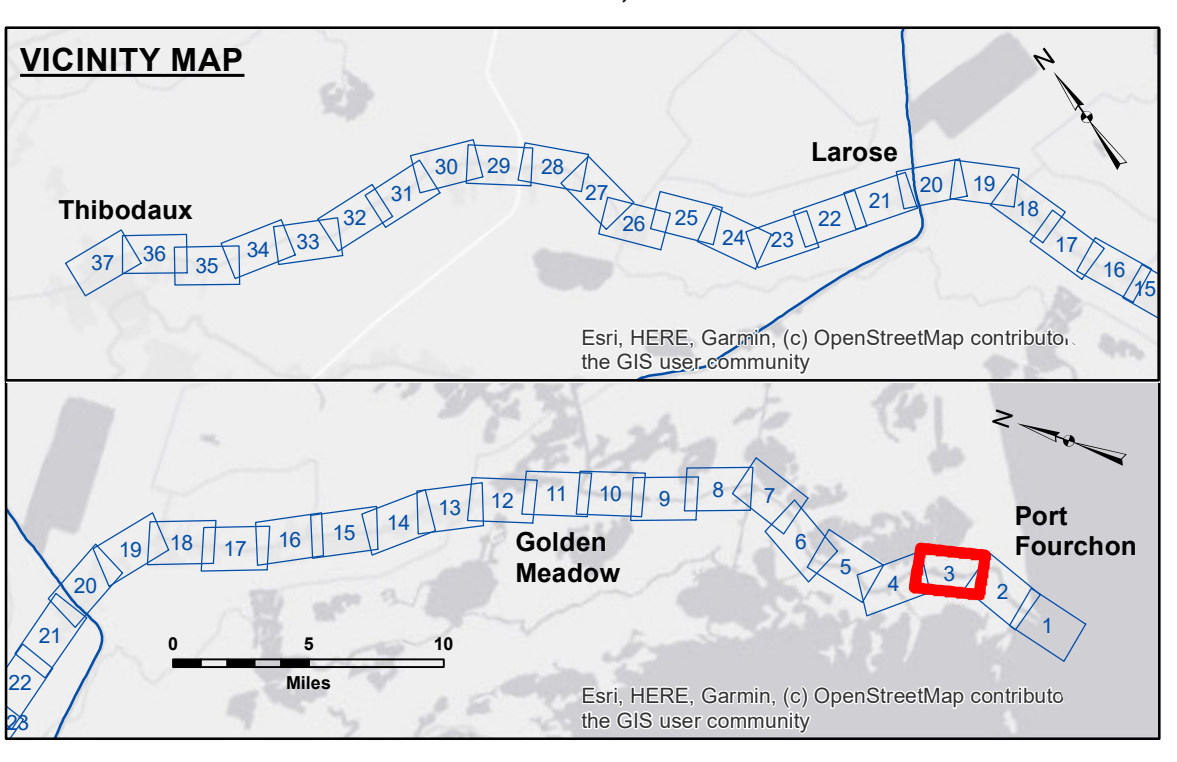


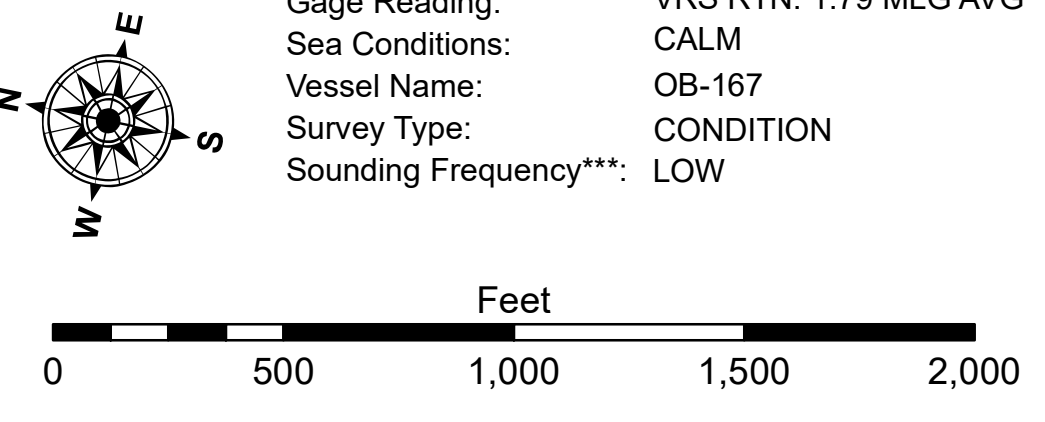
DISTRIBUTION LIABILITY: The data represents the results of data collection for a specific US Army Corps of Engineers project. It is only valid for its intended use, content, time and accuracy specifications. The user is responsible for the results of any use of this data for other than its intended purpose. Data collected for hydrographic survey data is subject to change rapidly due to several factors including but not limited to dredging operations, changes in channel conditions, and changes in the hydrographic conditions which develop after the date of the survey. The user is responsible for the results of any use of this data for other than its intended purpose. The information depicted on this map represents the results of a survey conducted on or about the date indicated. It is not intended to represent the ground condition existing at that time.

U.S. ARMY CORPS OF ENGINEERS NEW ORLEANS DISTRICT		
Submitted:	Surveyed By:	Checked By:
Recommended:	Plotted By:	JH
Chart, Survey Section	JH	JH
Approved:	Chart, Waterways Maintenance Section	

**BAYOU LAFOURCHE
WEST BELLE PASS
LF_03_LWR_20230919_CS
19 September 2023**



LEGEND			
--- Federal Navigation Channel	○ Cable Area	□ Borrow Area	■ -16' and above
— Federal Navigation Center Line	■ Placement Area	● Shoalest Sounding**	■ -16' to -24'
— As-built Pipeline/Cable	□ Anchorage Area	★ Beacon, General	■ -24' and below
..... Unconfirmed Pipeline/Cable	⊗ Obstruction Point	♦ Red Navigation Buoy	
— Project Depth Contour	✈ Wrecks-Submerged	♦ Green Navigation Buoy	



NOTES:
 Horizontal Coordinate System: North American Datum of 1983 (NAD83), projected to the State Plane Coordinate System (SPCS), Louisiana South Zone. Distance units in U.S. Survey Feet.
 Vertical Datum: Soundings are shown in feet and indicate depths below Mean Low Gulf Datum (MLG). Datum Relationships for Harbor Police Dock Staff as of August 2014: 0.0' NAVD88 (OPUS2011) = 0.61' MLLW (1983-2001) = 1.87' MLG
 Distances on the Bayou Lafourche are shown at 1 mile intervals.
 The location of navigation aids are based on and provided by the U.S. Coast Guard and USACE survey crews.
 2015 Aerial Photography data source: NAIP
 Reference is N.O.A.A. Navigation Chart No. 11365 and 11346.
 ** Shoalest Sounding per Quarter per Reach.
 *** High frequency (200 kHz) survey data represents the first signal return at a sounding location and will include suspended solids, known as "fluff", if present. Low frequency (20 kHz) survey data normally penetrates through this "fluff" layer to depict elevations of consolidated bottom material. Low frequency accuracies may vary depending on channel conditions and fathometer settings.

**Sheet Reference Number
3 of 37**