

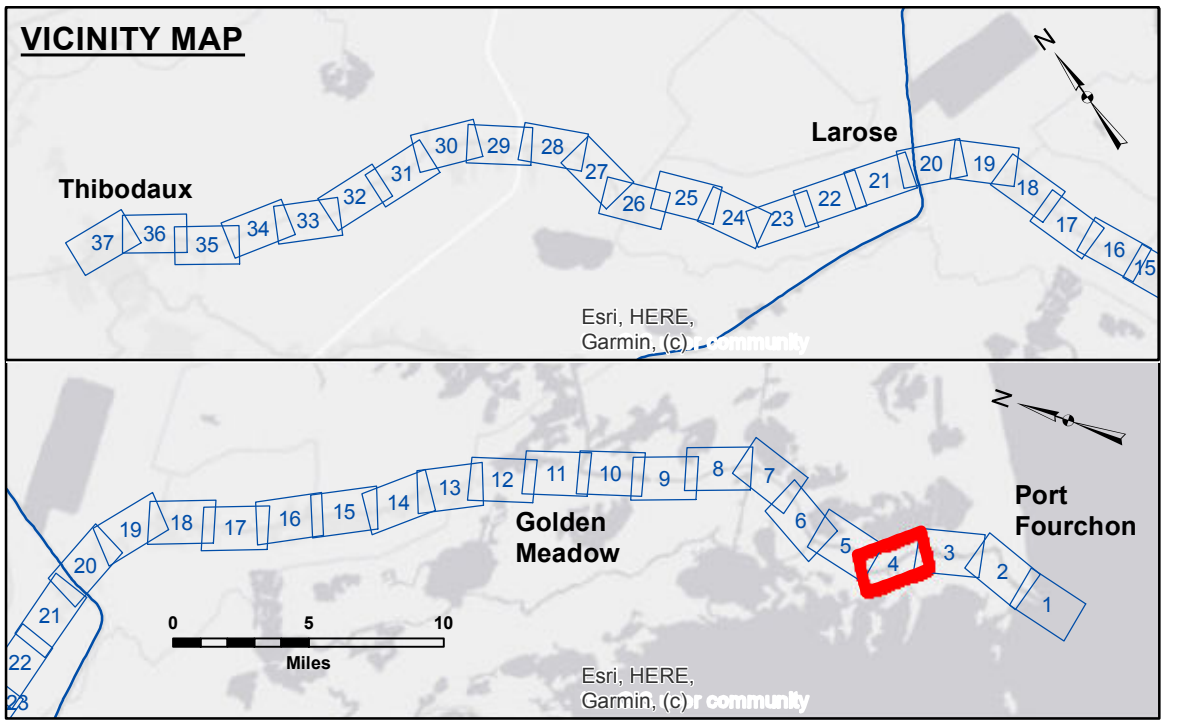
**DISCLAIMER**  
 The information depicted on this map represents the results of a survey conducted for a specific purpose and is not intended for any other use. The user is responsible for the accuracy, completeness, and timeliness of the data for their intended purpose. The user is responsible for the accuracy, completeness, and timeliness of the data for their intended purpose. The user is responsible for the accuracy, completeness, and timeliness of the data for their intended purpose. The user is responsible for the accuracy, completeness, and timeliness of the data for their intended purpose.

U.S. ARMY CORPS OF ENGINEERS NEW ORLEANS DISTRICT	
Submitted:	NOAA NRT
Recommended:	Chief, Survey Section
Plotted By:	JH
Checked By:	JH
Approved:	Chief, Waterways Maintenance Section

**BAYOU LAFOURCHE**  
**BAYOU LAFOURCHE**  
**LF\_04\_LWR\_20210904\_CS\_POSTIDA**  
**04 September 2021**

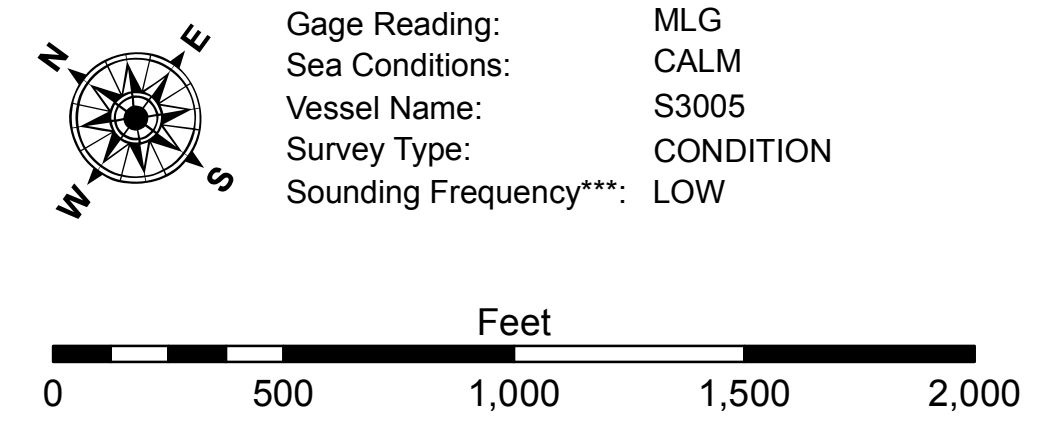
**Sheet Reference Number**  
**4 of 37**

Revision Number:  
 4.2-20210429



**LEGEND**

--- Federal Navigation Channel	○ Cable Area	□ Borrow Area	■ -16' and above
— Federal Navigation Center Line	□ Placement Area	● Shoalest Sounding**	■ -16' to -24'
— As-built Pipeline/Cable	□ Anchorage Area	★ Beacon, General	■ -24' and below
..... Unconfirmed Pipeline/Cable	⊗ Obstruction Point	◆ Red Navigation Buoy	
— Project Depth Contour	⚓ Wrecks-Submerged	◆ Green Navigation Buoy	



**NOTES:**  
 Horizontal Coordinate System:  
 North American Datum of 1983 (NAD83), projected to the State Plane Coordinate System (SPCS), Louisiana South Zone. Distance units in U.S. Survey Feet.  
 Vertical Datum:  
 Soundings are shown in feet and indicate depths below Mean Low Gulf Datum (MLG).  
 Distances on the Bayou Lafourche are shown at 1 mile intervals.  
 The location of navigation aids are based on and provided by the U.S. Coast Guard and USACE survey crews.  
 2017 Aerial Photography data source: NAIP, 1998 DOQQ shown in transparent green.  
 Reference is N.O.A.A. Navigation Chart No. 11365 and 11346.  
 \*\* Shoalest Sounding per Quarter per Reach.  
 \*\*\* High frequency (200 kHz) survey data represents the first signal return at a sounding location and will include suspended solids, known as "fluff", if present. Low frequency (20 kHz) survey data normally penetrates through this "fluff" layer to depict elevations of consolidated bottom material. Low frequency accuracies may vary depending on channel conditions and fathometer settings.