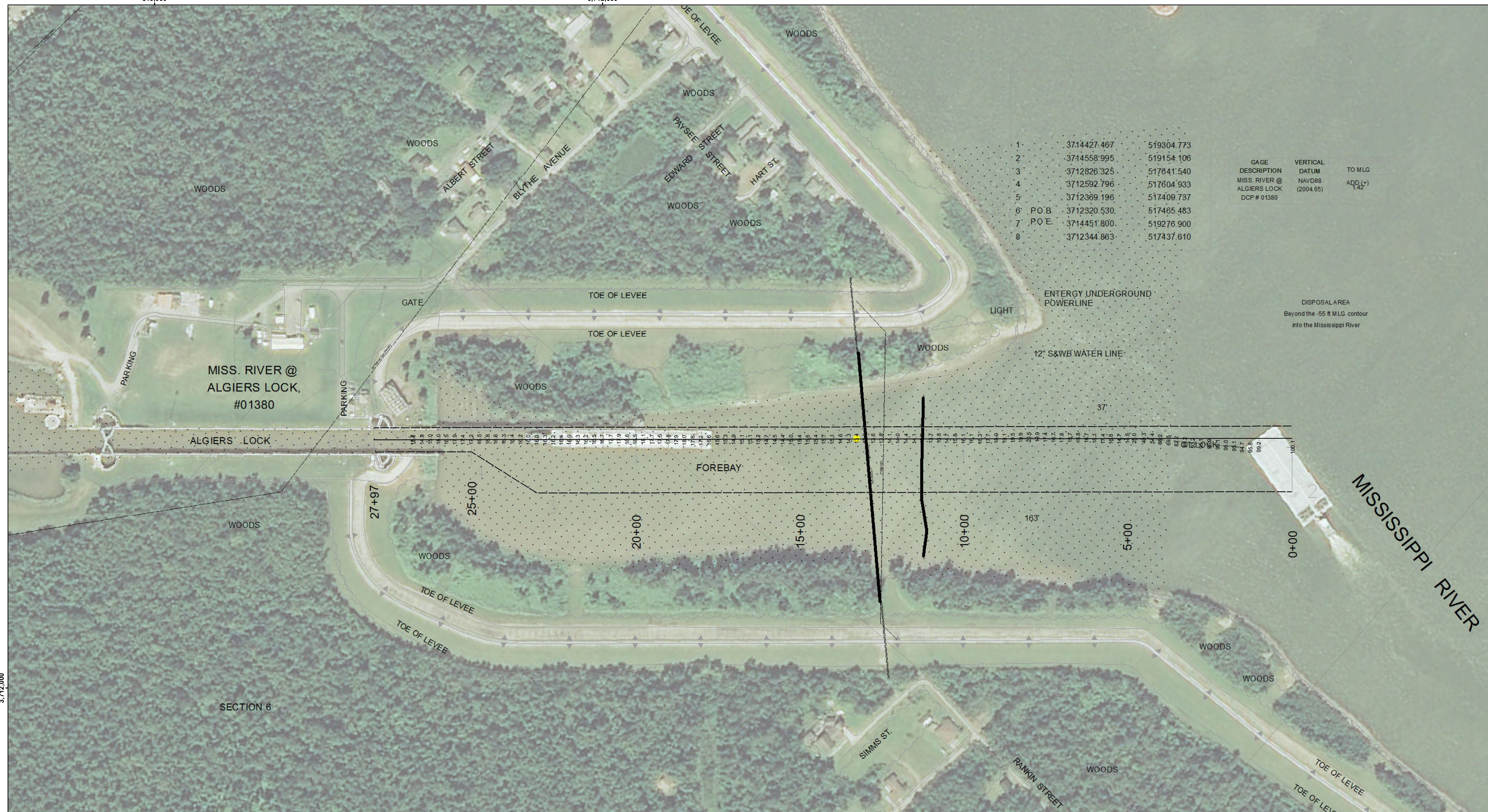


518,000

3,712,000



1	3714427.467	519304.773
2	3714558.995	519154.106
3	3712826.325	517641.540
4	3712592.796	517604.933
5	3712369.196	517409.737
6	P.O.B. 3712320.530	517465.483
7	P.O.E. 3714451.800	519276.900
8	3712344.863	517437.610

GAGE DESCRIPTION	VERTICAL DATUM	TO MLG
MISS. RIVER @ ALGIERS LOCK	NAVD88 (2004.65)	ADD (+) 1.42'
DCP # 01380		

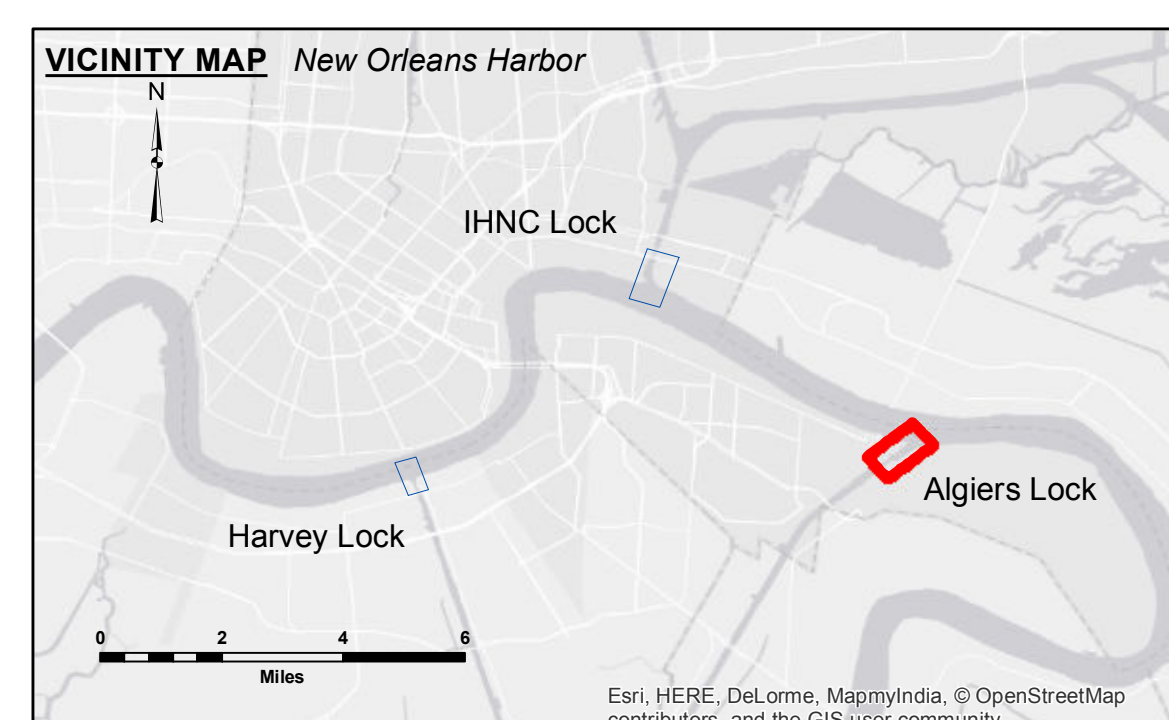


**US Army Corps of Engineers**  
District: CEMVN

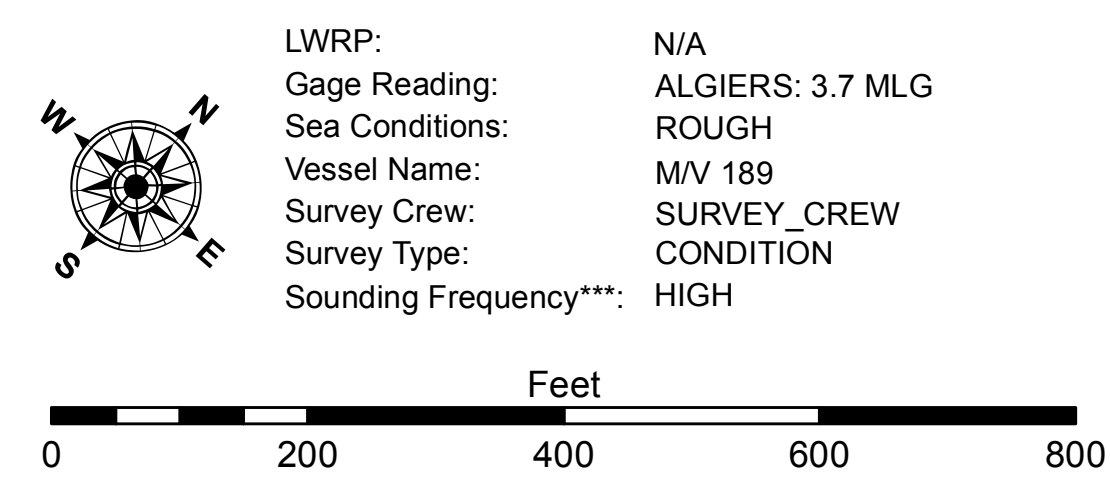
**NOTES:**  
Access: Contingents. The United States Government furnishes these data and the recipient accepts and uses them with the express understanding that the data are not to be used for any purpose other than that for which they were originally collected, expressed, or implied concerning the accuracy, completeness, reliability, usability or suitability for any particular purpose of the recipient. The user is responsible for the results of any application of the data for other than its intended purpose.  
Data: Contingents. Hydrographic survey data is subject to change due to several factors including but not limited to emerging hydrographic conditions which develop after the time of the survey. The Corps of Engineers does not accept responsibility for changes in the hydrographic conditions which develop after the time of the survey. Project maintainers should not rely solely upon it.

U.S. ARMY CORPS OF ENGINEERS NEW ORLEANS DISTRICT	
Submitted: _____	Surveyed By: SURVEY_CREW
Recommended: Chief, Survey Section	Plotted By: BITD
Approved: Chief, Waterways Maintenance Section	Checked By: RMI

**MISSISSIPPI RIVER DEEP-DRAFT LOCKS**  
**ALGIERS LOCK FOREBAY**  
LK\_01\_ALGX\_20151019  
19 October 2015



LEGEND	
--- Federal Navigation Channel	● Cable Area
— Federal Navigation Center Line	■ Placement Area
— As-built Pipeline/Cable	□ Anchorage Area
..... Unconfirmed Pipeline/Cable	⊗ Obstruction Point
— Project Depth Contour	✈ Wrecks-Submerged
□ Placement Area	● Shoalest Sounding**
★ Beacon, General	★ Red Navigation Buoy
★ Green Navigation Buoy	
■ -8' and above	
■ -8' to -10'	
■ -10' to -12'	
■ -12' and below	



**NOTES:**  
Horizontal Coordinate System:  
North American Datum of 1983 (NAD83), projected to the State Plane Coordinate System (SPCS), Louisiana South Zone. Distance units in U.S. Survey Feet.  
Vertical Datum:  
Soundings are shown in feet and indicate depths below Mean Low Gulf (MLG).  
Distances on the Mississippi River, above and below Head of Passes are shown at 1 mile intervals.  
The location of navigation aids are base on and provided by the U.S. Coast Guard and USACE crew.  
2010 Aerial Photography data source: NAIP, USDA-FSA-APFO Aerial Photography Field Office.  
Reference is N.O.A.A. Navigation Chart No. 11370.  
\*\* Shoalest Sounding per Quarter per Reach.  
\*\*\* High frequency (200 kHz) survey data represents the first signal return at a sounding location and will include suspended solids, known as "fluff", if present. Low frequency (20 kHz) survey data normally penetrates through this "fluff" layer to depict elevations of consolidated bottom material. Low frequency accuracies may vary depending on channel conditions and fathometer settings.

**Sheet Reference Number**  
**1 of 4**