

518,000

3,712,000

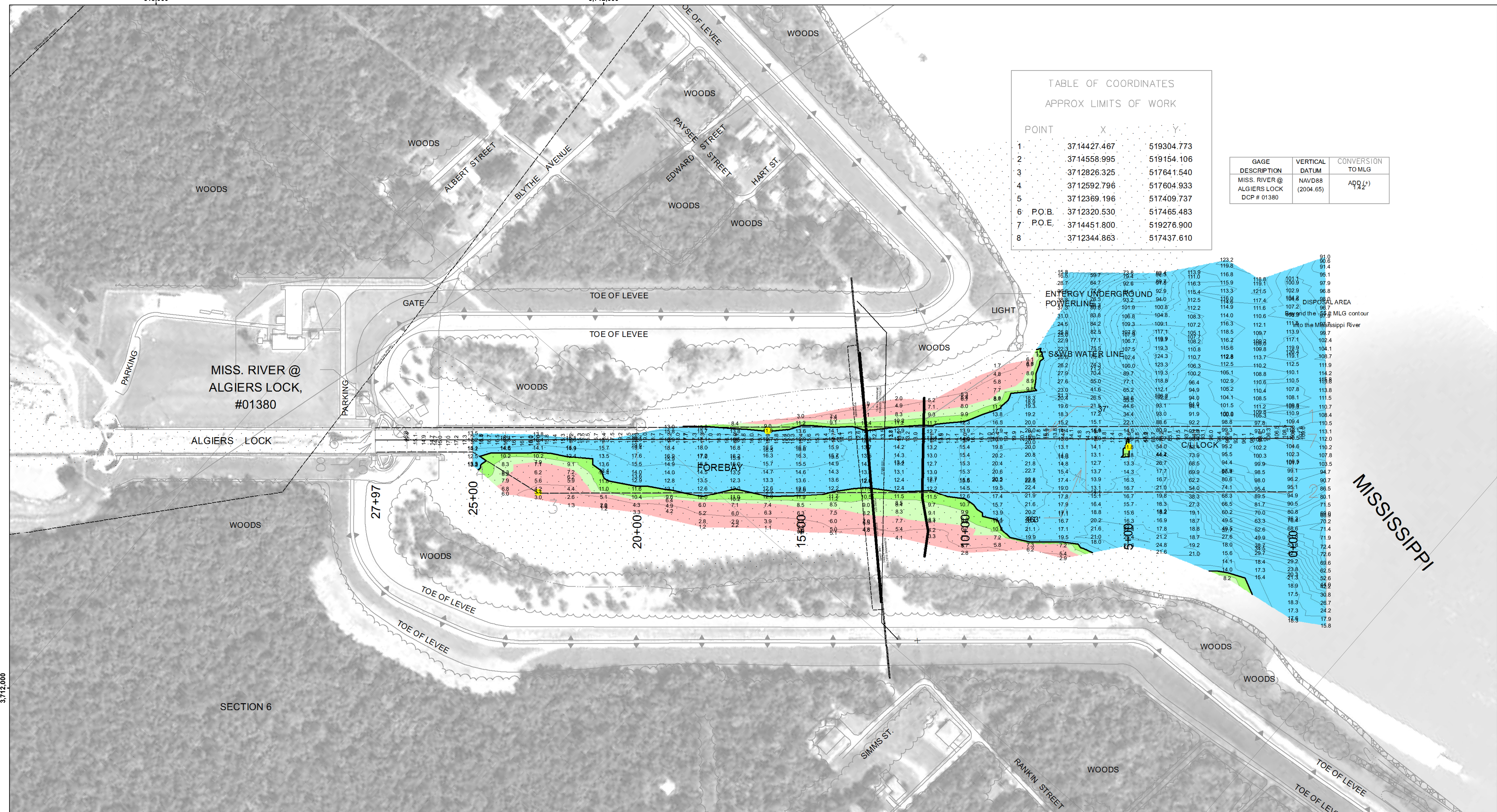


TABLE OF COORDINATES
APPROX LIMITS OF WORK

| POINT | X | Y |
|----------|-------------|------------|
| 1 | 3714427.467 | 519304.773 |
| 2 | 3714558.995 | 519154.106 |
| 3 | 3712826.325 | 517641.540 |
| 4 | 3712592.796 | 517604.933 |
| 5 | 3712369.196 | 517409.737 |
| 6 P.O.B. | 3712320.530 | 517465.483 |
| 7 P.O.E. | 3714451.800 | 519276.900 |
| 8 | 3712344.863 | 517437.610 |

| GAGE DESCRIPTION | VERTICAL DATUM | CONVERSION TO MLG |
|---|---------------------|-------------------|
| MISS. RIVER @ ALGIERS LOCK DCP # 01380 | NAVD88 (2004.65) | ADD (+) 1.2 |

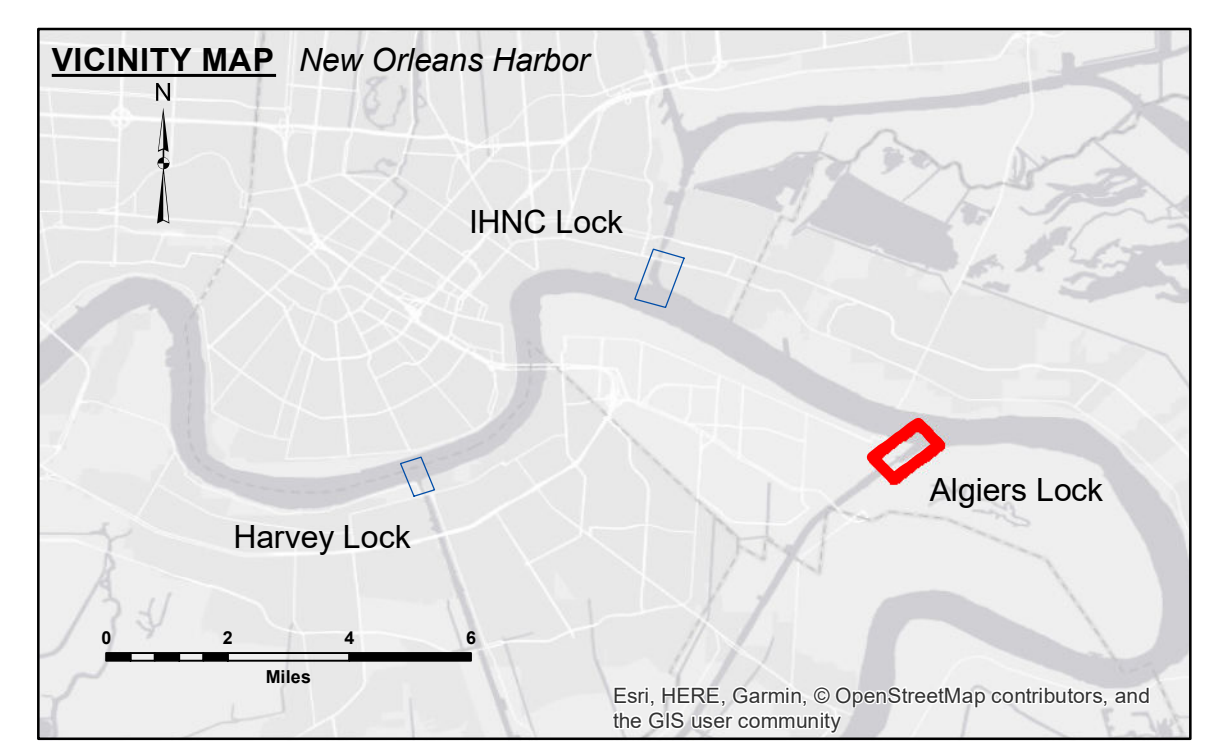


Distribution Liability: The data represents the results of data collection/processing for a specific US Army Corps of Engineers project. It is only valid for its intended use, content, time and accuracy specifications. The user is responsible for the results. The user must apply the appropriate datum for other than its intended purpose. Data Constants: Hydrographic survey data is subject to change rapidly due to several factors including but not limited to changing hydrological conditions when developed after the date of the survey. The US Army Corps of Engineers accepts no responsibility for changes in the hydrological conditions when developed after the date of the survey. Internal use. Product maintainers should not rely solely upon this information.

U.S. ARMY CORPS OF ENGINEERS
NEW ORLEANS DISTRICT

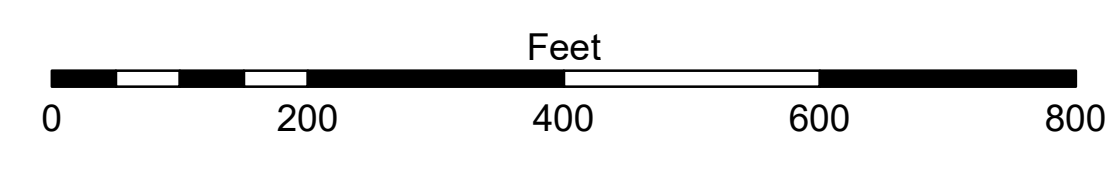
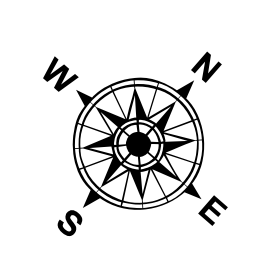
| | |
|--------------|--------------------------------|
| Submitted: | Surveyed By: RYLAND/HOSHMAN |
| Recommended: | Plotted By: AC |
| Approved: | Checked By: AC |

**MISSISSIPPI RIVER DEEP-DRAFT LOCKS
ALGIERS LOCK FOREBAY
LK_01_ALGX_20180815_CS**
15 August 2018



LEGEND

| | | | |
|----------------------------------|---------------------|-------------------------|-----------------------|
| --- Federal Navigation Channel | ○ Cable Area | □ Placement Area | ● Shoalest Sounding** |
| — Federal Navigation Center Line | □ Placement Area | ★ Beacon, General | ● -8' and above |
| — As-built Pipeline/Cable | □ Anchorage Area | ★ Red Navigation Buoy | ● -8' to -10' |
| Unconfirmed Pipeline/Cable | ✘ Obstruction Point | ★ Green Navigation Buoy | ● -10' to -12' |
| — Project Depth Contour | ✘ Wrecks-Submerged | | ● -12' and below |



LWRP: N/A
Gage Reading: ALGIERS FB: 3.8 MLG
Sea Conditions: CALM
Vessel Name: M/V OB189
Survey Type: CONDITION
Sounding Frequency***: HIGH

NOTES:
Horizontal Coordinate System:
North American Datum of 1983 (NAD83), projected to the State Plane Coordinate System (SPCS), Louisiana South Zone. Distance units in U.S. Survey Feet.
Vertical Datum:
Soundings are shown in feet and indicate depths below Mean Low Gulf (MLG).
Distances on the Mississippi River, above and below Head of Passes are shown at 1 mile intervals.
The location of navigation aids are base on and provided by the U.S. Coast Guard and USACE crew.
2015 Aerial Photography data source: NAIP, USDA-FSA-APFO Aerial Photography Field Office.
Reference is N.O.A.A. Navigation Chart No. 11370.
** Shoalest Sounding per Quarter per Reach.
*** High frequency (200 kHz) survey data represents the first signal return at a sounding location and will include suspended solids, known as "fluff", if present. Low frequency (20 kHz) survey data normally penetrates through this "fluff" layer to depict elevations of consolidated bottom material. Low frequency accuracies may vary depending on channel conditions and fathometer settings.

Sheet Reference Number
1 of 4
Revision Number:
3.12-20160811