

518,000

3,712,000

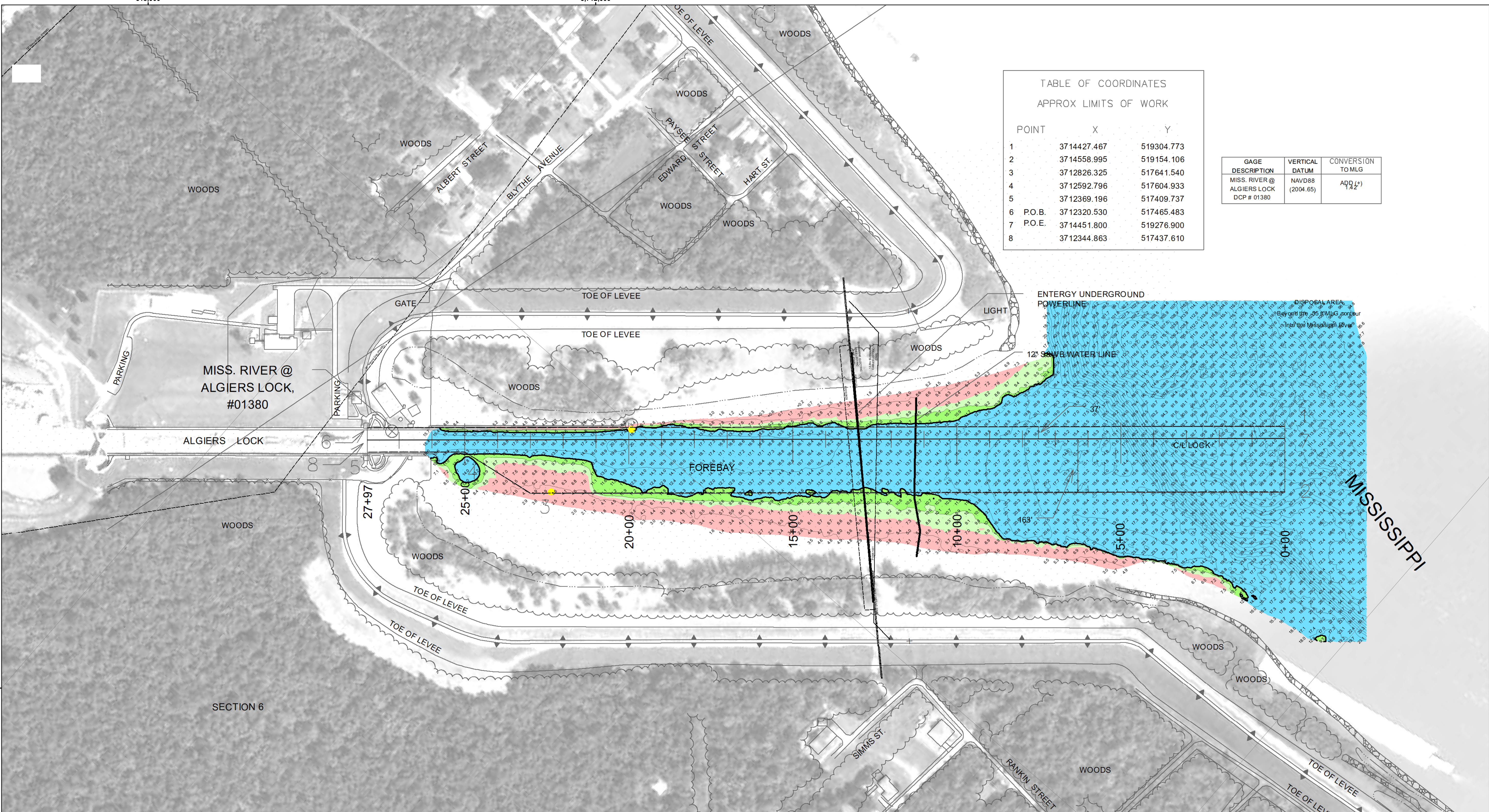


TABLE OF COORDINATES
APPROX LIMITS OF WORK

POINT	X	Y
1	3714427.467	519304.773
2	3714558.995	519154.106
3	3712826.325	517641.540
4	3712592.796	517604.933
5	3712369.196	517409.737
6 P.O.B.	3712320.530	517465.483
7 P.O.E.	3714451.800	519276.900
8	3712344.863	517437.610

GAGE DESCRIPTION	VERTICAL DATUM	CONVERSION TO MLG
MISS. RIVER @ ALGIERS LOCK DCP # 01380	NAVD88 (2004.65)	ADD 1.42'



Distribution Liability: The data represents the results of data collection/processing for a specific US Army Corps of Engineers project. It is only valid for its intended use, content, time and accuracy specifications. The user is responsible for the results of any application of the data for other than its intended purpose.

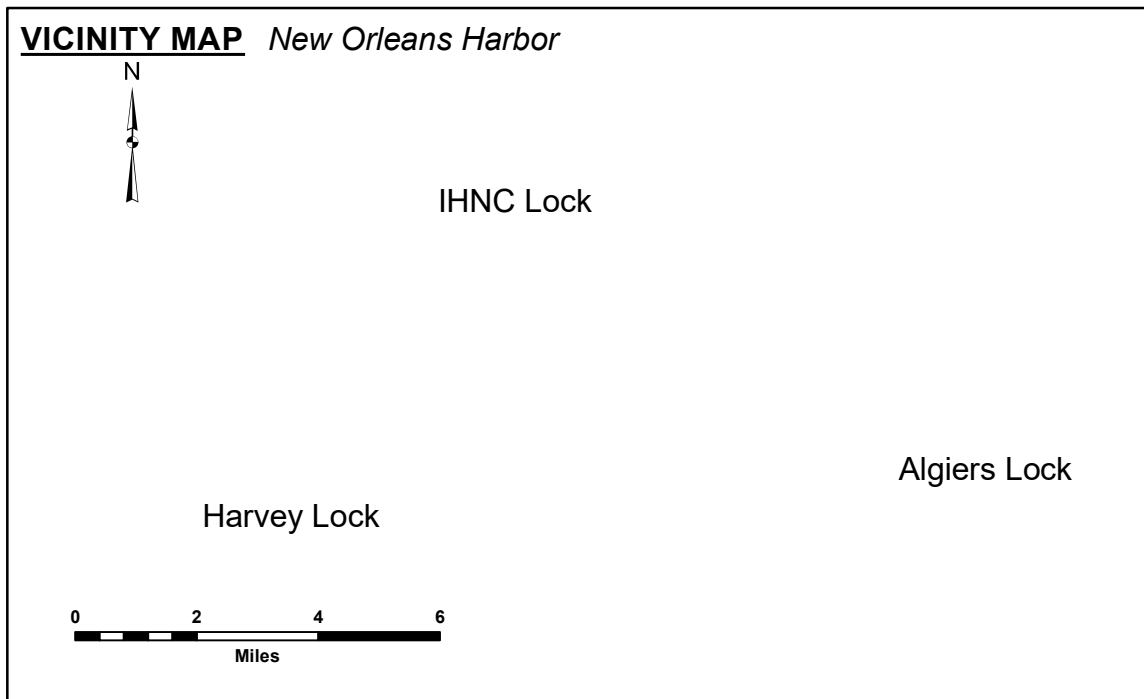
Data Constraints: Hydrographic survey data is subject to change rapidly due to several factors including but not limited to changing hydrological conditions when developed after the date of the survey. The US Army Corps of Engineers accepts no responsibility for changes in the hydrological conditions when developed after the date of the survey. Product maintainers should not rely solely upon this internal use.

Access Constraints: The United States Government furnishes these data and the recipient accepts and uses them with the express understanding that the data are not to be used for any purpose other than that for which they were prepared, or implied concerning the accuracy, completeness, readability, usability or suitability, for any particular purpose of the recipient. The recipient agrees to indemnify the United States Government under no liability whatsoever to any person by reason of any use made thereof. These data belong to the Government. Therefore, the recipient agrees to return these data to the Government upon request. The recipient may not transfer these data to others without also transferring this Disclaimer.

The information depicted on this map represents the results of a survey conducted on or about the date indicated. It is not to be considered to represent the general condition existing at that time.

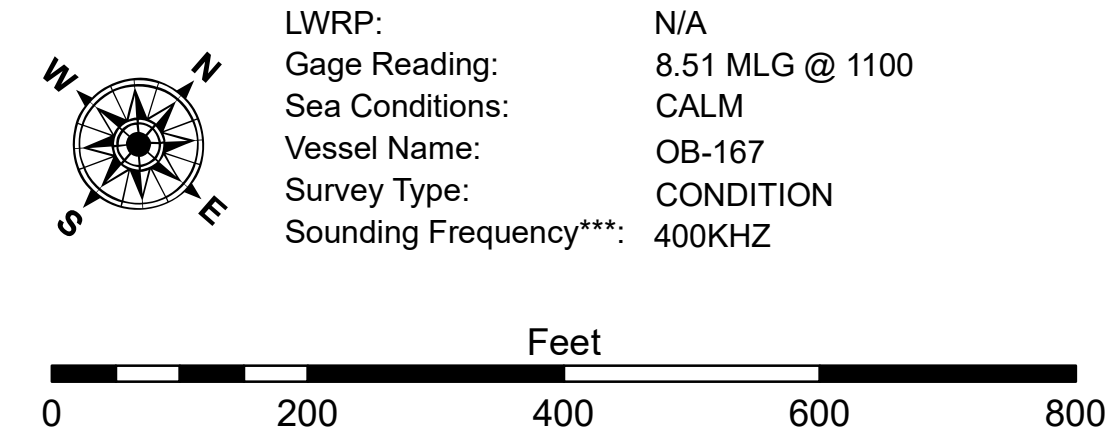
U.S. ARMY CORPS OF ENGINEERS NEW ORLEANS DISTRICT		
Submitted:	Surveyed By: SP-JA	Plotted By: AO
Recommended:	Chief, Survey Section	Checked By: AO
Approved:	Chief, Waterways Maintenance Section	

**MISSISSIPPI RIVER DEEP-DRAFT LOCKS
ALGIERS LOCK FOREBAY
LK_01_ALG_20181002_AD_5X5
02 October 2018**



LEGEND

--- Federal Navigation Channel	○ Cable Area	□ Placement Area
— Federal Navigation Center Line	□ Placement Area	● Shoalest Sounding**
— As-built Pipeline/Cable	□ Anchorage Area	★ Beacon, General
..... Unconfirmed Pipeline/Cable	⊗ Obstruction Point	◆ Red Navigation Buoy
— Project Depth Contour	⚓ Wrecks-Submerged	◆ Green Navigation Buoy
		■ -8' and above
		■ -8' to -10'
		■ -10' to -12'
		■ -12' and below



Sheet Reference Number
1 of 4