

518,000

3,712,000

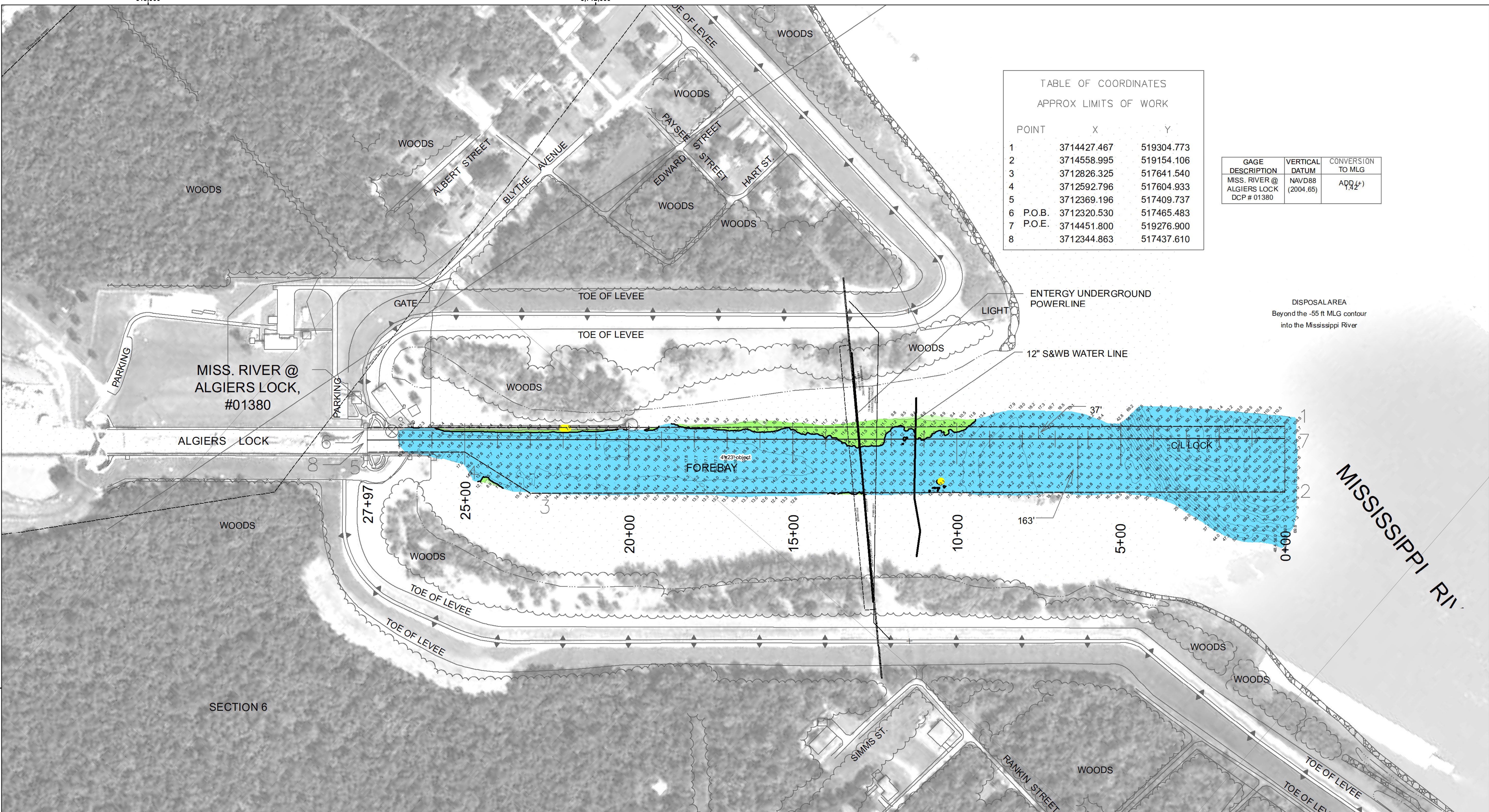


TABLE OF COORDINATES
APPROX LIMITS OF WORK

POINT	X	Y
1	3714427.467	519304.773
2	3714558.995	519154.106
3	3712826.325	517641.540
4	3712592.796	517604.933
5	3712369.196	517409.737
6 P.O.B.	3712320.530	517465.483
7 P.O.E.	3714451.800	519276.900
8	3712344.863	517437.610

GAGE DESCRIPTION	VERTICAL DATUM	CONVERSION TO MLG
MISS. RIVER @ ALGIERS LOCK DCP # 01380	NAVD88 (2004.65)	ADD 1.42'

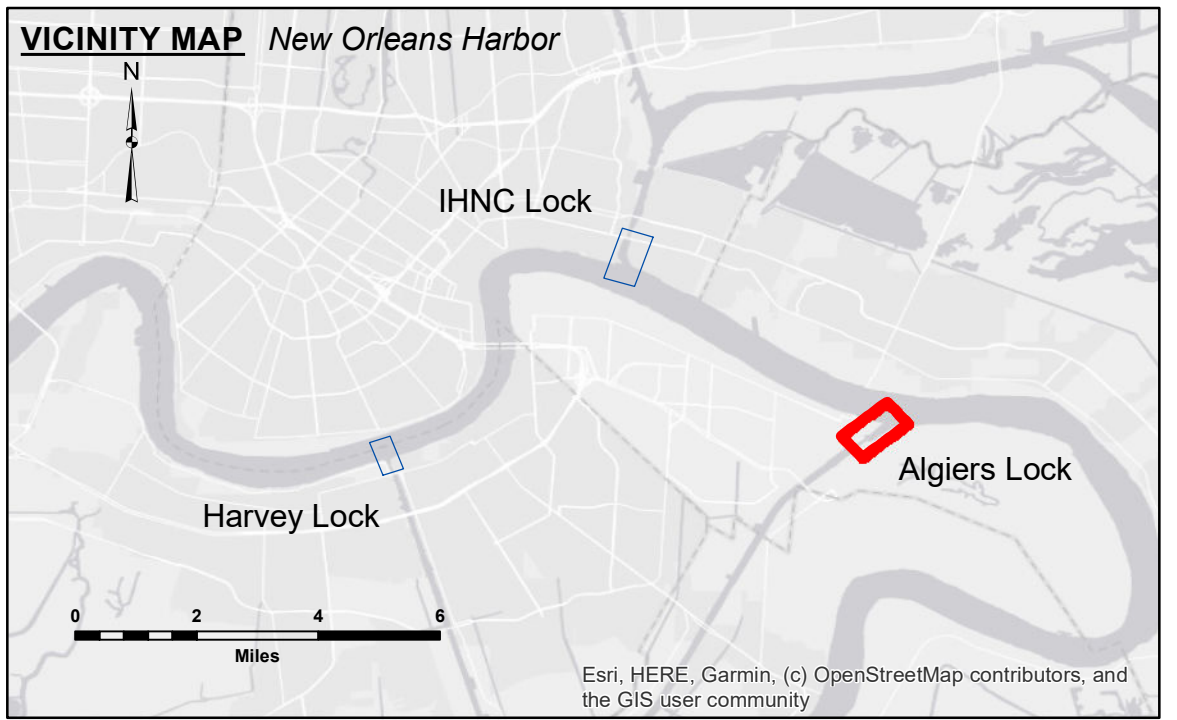
DISPOSAL AREA
Beyond the -55 ft MLG contour
into the Mississippi River



DISCLAIMER
The information depicted on this map represents the results of a survey conducted by the U.S. Army Corps of Engineers. It is not intended to be used for any purpose other than that for which it was prepared. The user is responsible for the accuracy, completeness, and reliability of the information. The user is responsible for the accuracy, completeness, and reliability of the information. The user is responsible for the accuracy, completeness, and reliability of the information.

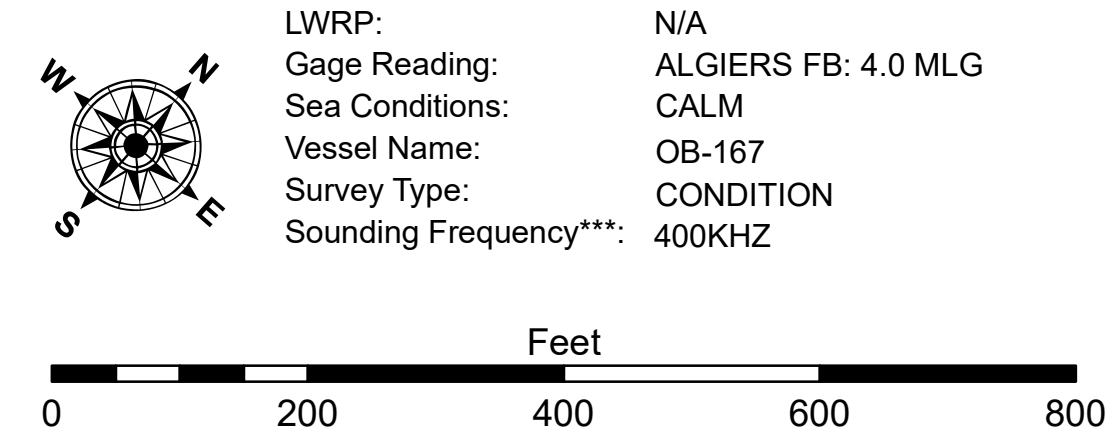
U.S. ARMY CORPS OF ENGINEERS NEW ORLEANS DISTRICT		
Submitted:	Surveyed By: SP:JH	Plotted By: AC
Recommended:	Chief, Survey Section	Checked By: AC
Approved:	Chief, Waterways Maintenance Section	

**MISSISSIPPI RIVER DEEP-DRAFT LOCKS
ALGIERS LOCK FOREBAY
LK_01_ALG_20201103_CS_5X5
03 November 2020**



LEGEND

--- Federal Navigation Channel	○ Cable Area	□ Placement Area	● Shoalest Sounding**	■ -8' and above
— Federal Navigation Center Line	□ Placement Area	★ Beacon, General	★ Beacon, General	■ -8' to -10'
— As-built Pipeline/Cable	□ Anchorage Area	◆ Red Navigation Buoy	◆ Red Navigation Buoy	■ -10' to -12'
..... Unconfirmed Pipeline/Cable	✘ Obstruction Point	◆ Green Navigation Buoy	◆ Green Navigation Buoy	■ -12' and below
— Project Depth Contour	✘ Wrecks-Submerged			



NOTES:
Horizontal Coordinate System:
North American Datum of 1983 (NAD83), projected to the State Plane Coordinate System (SPCS), Louisiana South Zone. Distance units in U.S. Survey Feet.
Vertical Datum:
Soundings are shown in feet and indicate depths below Mean Low Gulf (MLG).
Distances on the Mississippi River, above and below Head of Passes are shown at 1 mile intervals.
The location of navigation aids are base on and provided by the U.S. Coast Guard and USACE crew.
2015 Aerial Photography data source: NAIP, USDA-FSA-APFO Aerial Photography Field Office.
Reference is N.O.A.A. Navigation Chart No. 11370.
** Shoalest Sounding per Quarter per Reach.
*** High frequency (200 kHz) survey data represents the first signal return at a sounding location and will include suspended solids, known as "fluff", if present. Low frequency (20 kHz) survey data normally penetrates through this "fluff" layer to depict elevations of consolidated bottom material. Low frequency accuracies may vary depending on channel conditions and fathometer settings.

**Sheet Reference Number
1 of 4**

Revision Number:
4.1-2019115