

518,000

3,712,000

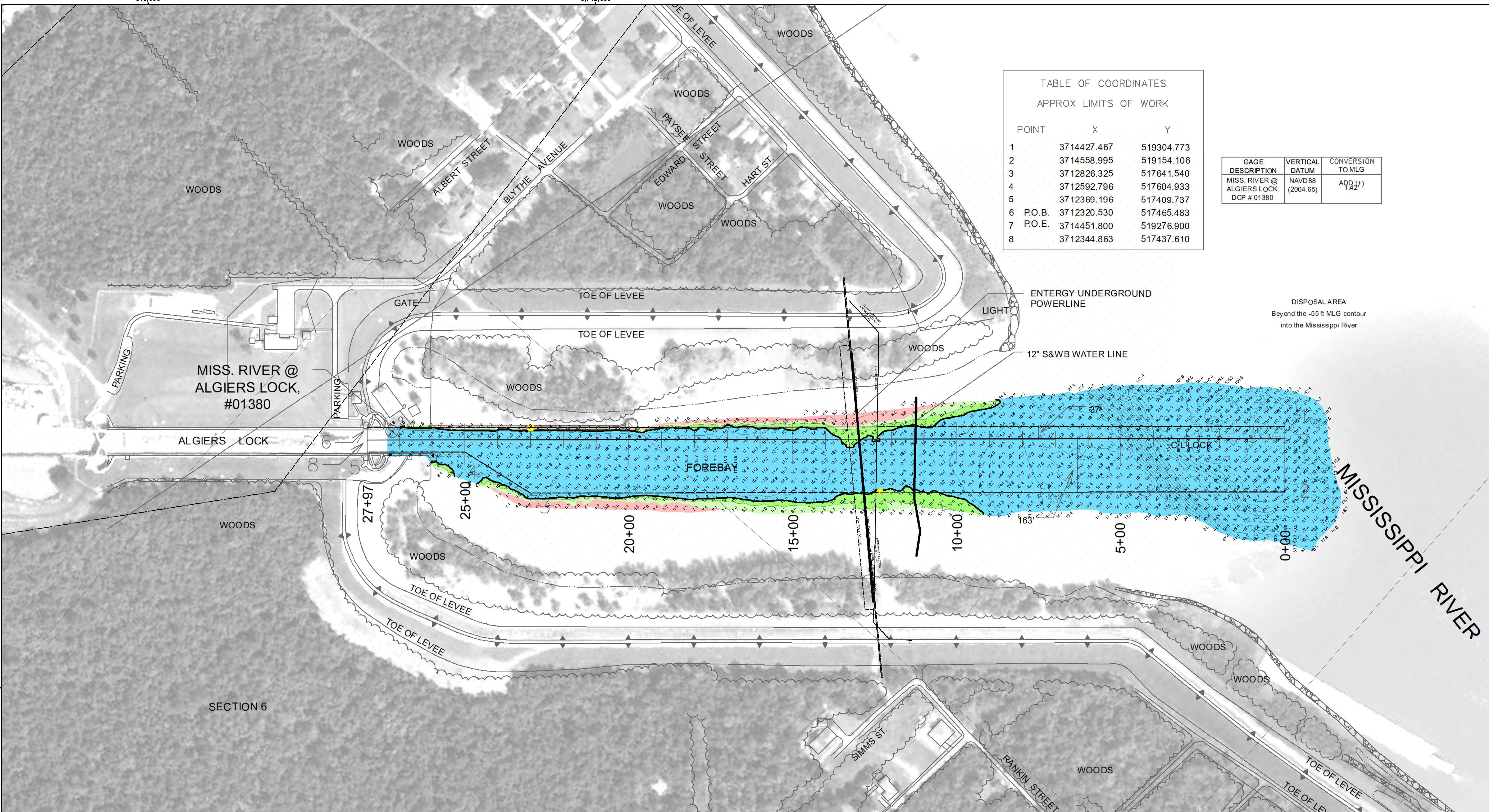


TABLE OF COORDINATES  
APPROX LIMITS OF WORK

POINT	X	Y
1	3714427.467	519304.773
2	3714558.995	519154.106
3	3712826.325	517641.540
4	3712592.796	517604.933
5	3712369.196	517409.737
6 P.O.B.	3712320.530	517465.483
7 P.O.E.	3714451.800	519276.900
8	3712344.863	517437.610

GAGE DESCRIPTION	VERTICAL DATUM	CONVERSION TO MLG
MISS. RIVER @ ALGIERS LOCK DCP # 01380	NAVD88 (2004.65)	ADD 1.42'

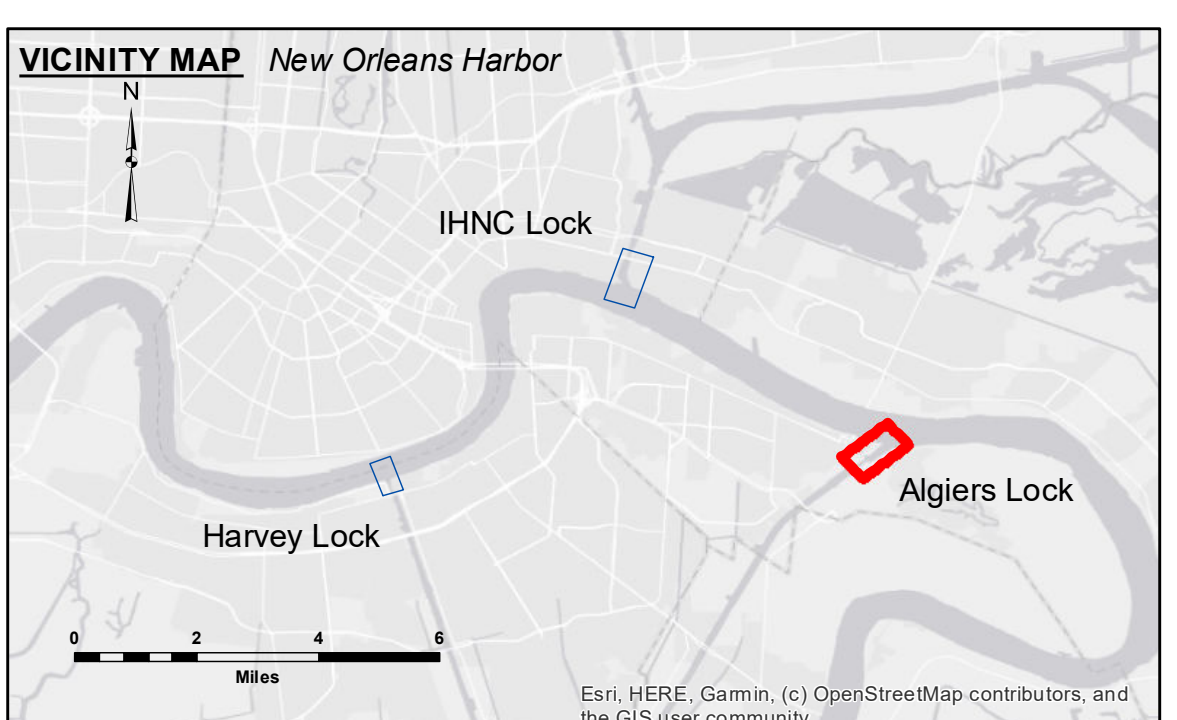


**DISCLAIMER:** The data represents the results of data collection for a specific US Army Corps of Engineers project. The user is responsible for the accuracy, reliability, usability or suitability for any particular purpose of the data. The user is responsible for the accuracy, reliability, usability or suitability for any particular purpose of the data. The user is responsible for the accuracy, reliability, usability or suitability for any particular purpose of the data. The user is responsible for the accuracy, reliability, usability or suitability for any particular purpose of the data.

U.S. ARMY CORPS OF ENGINEERS  
NEW ORLEANS DISTRICT

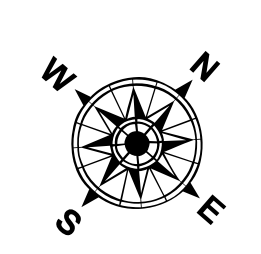
Submitted:	Reviewed:	Checked By:
	Chief Survey Section	AD/JH
Survised By:	Plotted By:	Checked By:
PM, JA	BD	AD/JH

**MISSISSIPPI RIVER DEEP-DRAFT LOCKS  
ALGIERS LOCK FOREBAY  
LK\_01\_ALG\_20230411\_CS\_5X5  
11 April 2023**

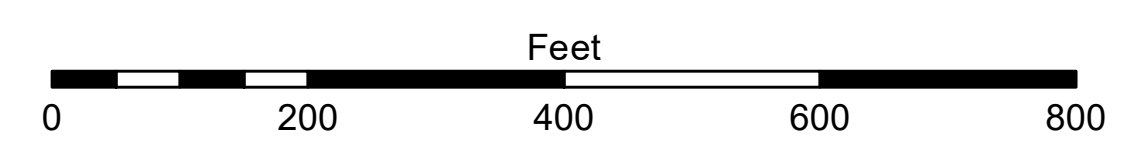


**LEGEND**

--- Federal Navigation Channel	○ Cable Area	□ Placement Area	● Shoalest Sounding**	■ -8' and above
— Federal Navigation Center Line	□ Placement Area	★ Beacon, General	● -8' to -10'	■ -10' to -12'
— As-built Pipeline/Cable	⊗ Obstruction Point	◆ Red Navigation Buoy	■ -12' and below	
..... Unconfirmed Pipeline/Cable	✈ Wrecks-Submerged	◆ Green Navigation Buoy		
— Project Depth Contour				



LWRP: N/A  
Gage Reading: ALGIERS LOCK FB: 11.32 MLG  
Sea Conditions: CALM  
Vessel Name: OB-167  
Survey Type: MB  
Sounding Frequency\*\*\*: 400 KHZ



**NOTES:**  
Horizontal Coordinate System:  
North American Datum of 1983 (NAD83), projected to the State Plane Coordinate System (SPCS), Louisiana South Zone. Distance units in U.S. Survey Feet.  
Vertical Datum:  
Soundings are shown in feet and indicate depths below Mean Low Gulf (MLG).  
Distances on the Mississippi River, above and below Head of Passes are shown at 1 mile intervals.  
The location of navigation aids are based on and provided by the U.S. Coast Guard and USACE crew.  
2015 Aerial Photography data source: NAIP, USDA-FSA-APFO Aerial Photography Field Office.  
Reference is N.O.A.A. Navigation Chart No. 11370.  
\*\* Shoalest Sounding per Quarter per Reach.  
\*\*\* High frequency (200 kHz) survey data represents the first signal return at a sounding location and will include suspended solids, known as "fluff", if present. Low frequency (20 kHz) survey data normally penetrates through this "fluff" layer to depict elevations of consolidated bottom material. Low frequency accuracies may vary depending on channel conditions and bathymeter settings.

**Sheet Reference Number  
1 of 4**

Revision Number:  
4.2-202/064.20