

518,000

3,712,000

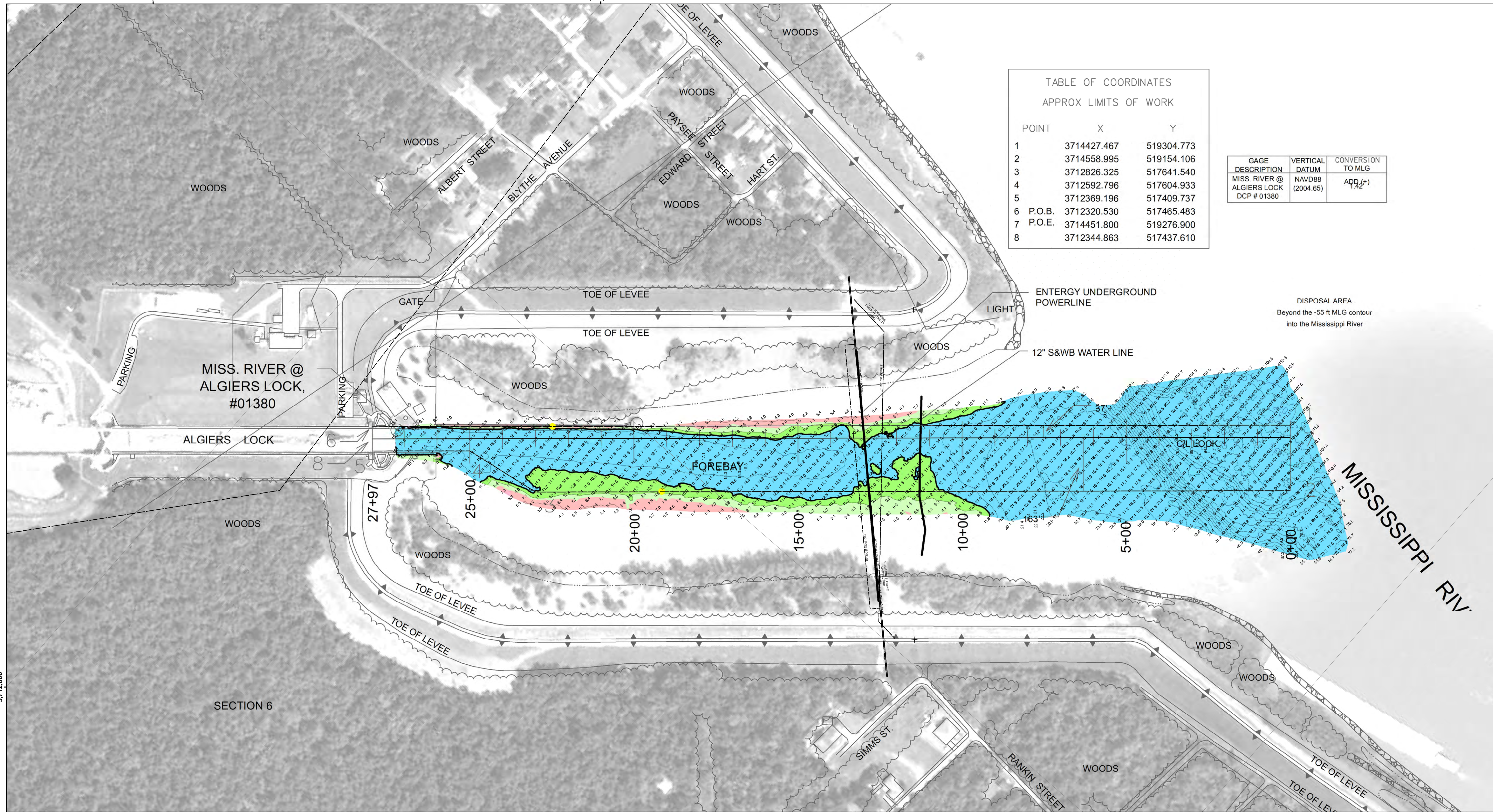


TABLE OF COORDINATES  
APPROX LIMITS OF WORK

POINT	X	Y
1	3714427.467	519304.773
2	3714558.995	519154.106
3	3712826.325	517641.540
4	3712592.796	517604.933
5	3712369.196	517409.737
6 P.O.B.	3712320.530	517465.483
7 P.O.E.	3714451.800	519276.900
8	3712344.863	517437.610

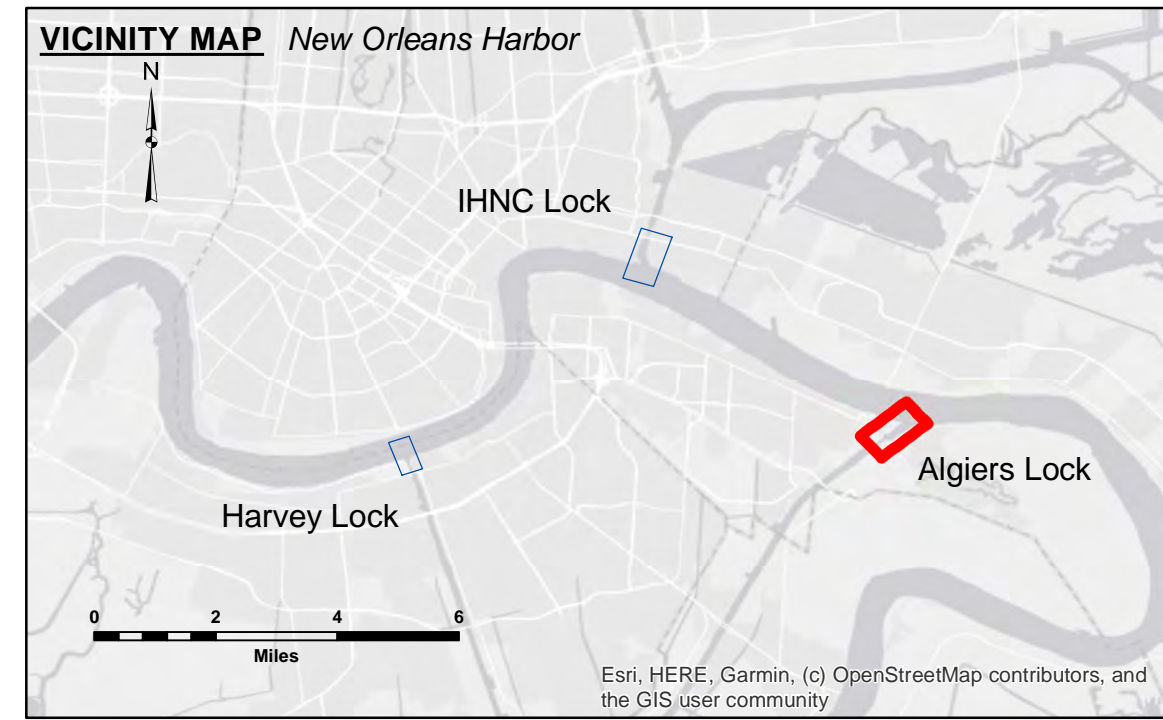
GAGE DESCRIPTION	VERTICAL DATUM	CONVERSION TO MLG
MISS. RIVER @ ALGIERS LOCK DCP # 01380	NAVD88 (2004.65)	ADD 1.42'



**DISCLAIMER**  
The information depicted on this map represents the results of a survey conducted on or about the date of the survey. The user is responsible for the accuracy, completeness, and reliability of the information for the intended purpose. The user is responsible for the accuracy, completeness, and reliability of the information for the intended purpose. The user is responsible for the accuracy, completeness, and reliability of the information for the intended purpose.

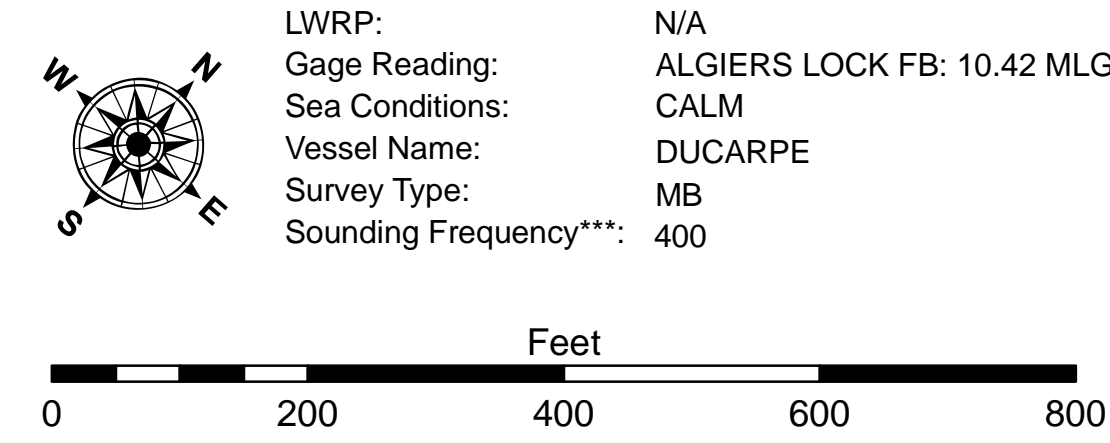
Submitted:	Surveyed By: PM/AO
Recommended: Chief, Survey Section	Plotted By: BD
Approved: Chief, Waterways Maintenance Section	Checked By: AO/JH

**MISSISSIPPI RIVER DEEP-DRAFT LOCKS**  
**ALGIERS LOCK FOREBAY**  
LK\_01\_ALG\_20240529\_CS\_3X3  
29 May 2024



**LEGEND**

--- Federal Navigation Channel	○ Cable Area	□ Placement Area	● Shoalest Sounding**
— Federal Navigation Center Line	□ Anchorage Area	★ Beacon, General	■ -8' and above
— As-built Pipeline/Cable	⊗ Obstruction Point	◆ Red Navigation Buoy	■ -8' to -10'
..... Unconfirmed Pipeline/Cable	⚓ Wrecks-Submerged	◆ Green Navigation Buoy	■ -10' to -12'
— Project Depth Contour			■ -12' and below



**NOTES:**  
Horizontal Coordinate System:  
North American Datum of 1983 (NAD83), projected to the State Plane Coordinate System (SPCS), Louisiana South Zone. Distance units in U.S. Survey Feet.  
Vertical Datum:  
Soundings are shown in feet and indicate depths below Mean Low Gulf (MLG).  
Distances on the Mississippi River, above and below Head of Passes are shown at 1 mile intervals.  
The location of navigation aids are based on and provided by the U.S. Coast Guard and USACE crew.  
2015 Aerial Photography data source: NAIP, USDA-FSA-APFO Aerial Photography Field Office.  
Reference is N.O.A. Navigation Chart No. 11370.  
\*\* Shoalest Sounding per Quarter per Reach.  
\*\*\* High frequency (200 kHz) survey data represents the first signal return at a sounding location and will include suspended solids, known as "fluff", if present. Low frequency (20 kHz) survey data normally penetrates through this "fluff" layer to depict elevations of consolidated bottom material. Low frequency accuracies may vary depending on channel conditions and fathometer settings.

**Sheet Reference Number**  
1 of 4  
Revision Number:  
4.2-31024M20