

| GAGE DESCRIPTION | VERTICAL DATUM | CONVERSION |
|-------------------------|------------------|------------|
| | | TO MLG |
| MISS. RIVER @ IHNC LOCK | NAVD88 (2004.65) | ADD (+) |
| DCP# 01340 | | 1.83' |

| TABLE OF COORDINATES APPROX LIMITS OF WORK | | |
|--|-------------|------------|
| POINT | X | Y |
| 1 | 3694672.343 | 531637.537 |
| 2 | 3694803.259 | 531710.755 |
| 3 | 3694156.467 | 532867.245 |
| 4 | 3694063.970 | 533616.601 |
| 5 | 3694289.163 | 534448.693 |
| 6 | 3694300.250 | 534566.222 |
| 7 | 3694326.374 | 534662.749 |
| 8 | 3694254.673 | 534684.907 |
| 9 | 3693974.131 | 533724.857 |
| 10 | 3693874.386 | 533356.299 |
| 11 | 3693920.635 | 532981.621 |
| 12 | 3694737.801 | 531674.146 |
| 13 | 3694113.710 | 532790.045 |
| 14 | 3694008.465 | 533631.623 |
| 15 | 3694290.871 | 534675.111 |

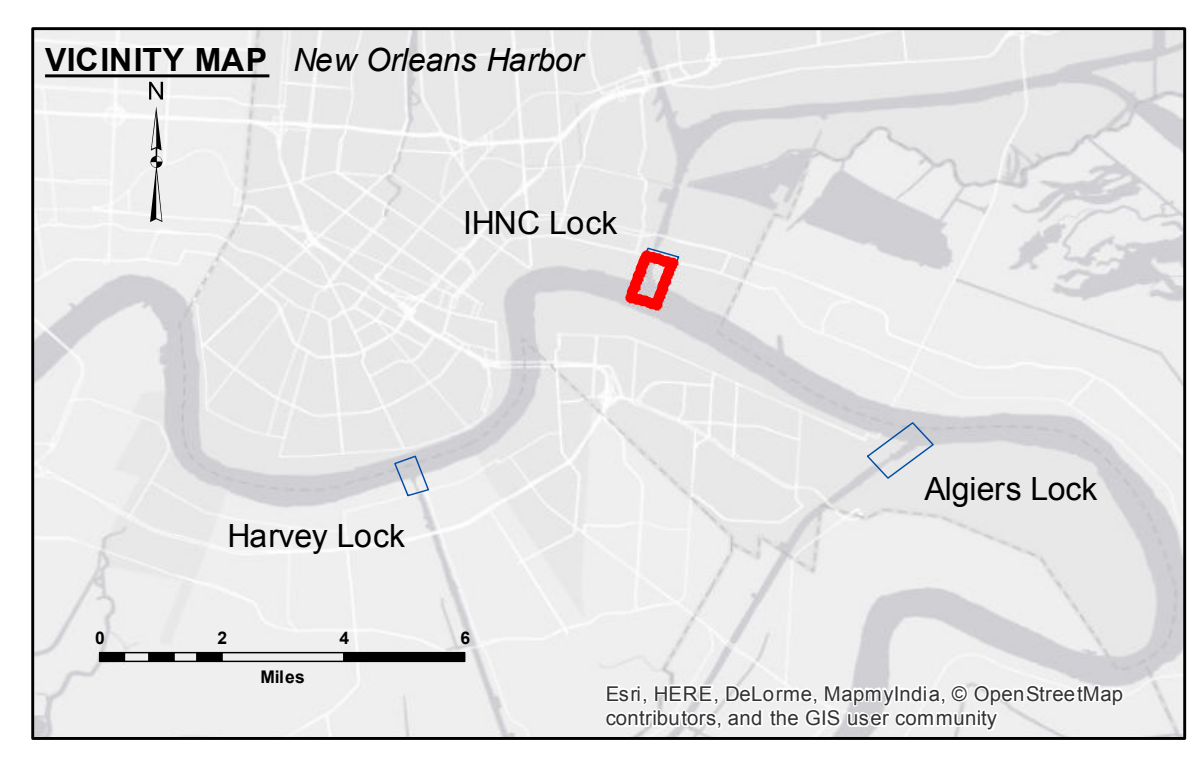
| CURVE DATA | |
|---------------------|-----------------------|
| CURVE 1 DATA | |
| EAST EDGE OF CUT | DELTA: 44° 21' 37.84" |
| DEGREE OF CURVE: | 5° 43' 46.48" |
| TANGENT: | 407.69' |
| LENGTH OF CURVE: | 774.24' |
| RADIUS: | 1000' |
| CURVE 2 DATA | |
| C/L | DELTA: 44° 21' 37.84" |
| DEGREE OF CURVE: | 5° 07' 14.77" |
| TANGENT: | 456.16' |
| LENGTH OF CURVE: | 866.29' |
| RADIUS: | 1118.89' |
| CURVE 3 DATA | |
| WEST EDGE OF CUT | DELTA: 44° 21' 38.05" |
| DEGREE OF CURVE: | 11° 27' 32.96" |
| TANGENT: | 203.85' |
| LENGTH OF CURVE: | 387.12' |
| RADIUS: | 500' |



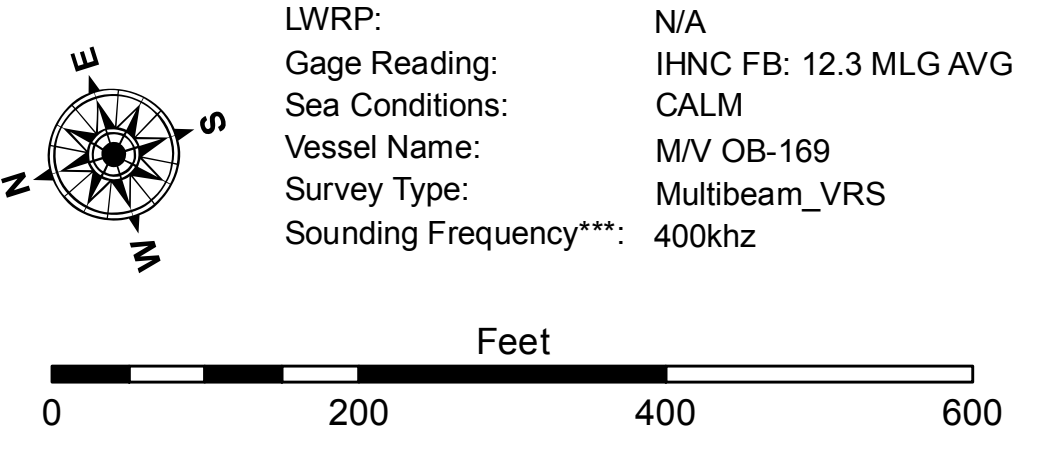
DISCLAIMER: The data represents the results of data collection performed for a specific US Army Corps of Engineers project and is not intended for any other purpose. The user is responsible for the accuracy, completeness, and reliability of the data for its intended use. The user is not to be held liable for any damages or losses resulting from the use of this data. The user is not to be held liable for any damages or losses resulting from the use of this data. The user is not to be held liable for any damages or losses resulting from the use of this data.

| U.S. ARMY CORPS OF ENGINEERS NEW ORLEANS DISTRICT | | |
|--|-------------|--|
| Submitted: | Checked By: | |
| Recommended: | Checked By: | |
| Approved: | Checked By: | |

MISSISSIPPI RIVER DEEP-DRAFT LOCKS
I.H.N.C. LOCK FOREBAY
LK_02_IHN_20160407_5X5
07 April 2016



| LEGEND | | | |
|----------------------------------|---------------------|-------------------------|----------------|
| --- Federal Navigation Channel | ○ Cable Area | □ Placement Area | -12' and above |
| — Federal Navigation Center Line | □ Placement Area | ● Shoalest Sounding** | -12' to -20' |
| — As-built Pipeline/Cable | □ Anchorage Area | ☆ Beacon, General | -20' to -25' |
| Unconfirmed Pipeline/Cable | ⊗ Obstruction Point | ◆ Red Navigation Buoy | -25' to -32' |
| — Project Depth Contour | ⊗ Wrecks-Submerged | ◆ Green Navigation Buoy | -32' to -36' |
| | | | -36' and below |



NOTES:
Horizontal Coordinate System:
North American Datum of 1983 (NAD83), projected to the State Plane Coordinate System (SPCS), Louisiana South Zone. Distance units in U.S. Survey Feet.
Vertical Datum:
Soundings are shown in feet and indicate depths below Mean Low Gulf (MLG).
Distances on the Mississippi River, above and below Head of Passes are shown at 1 mile intervals.
The location of navigation aids are based on and provided by the U.S. Coast Guard and USACE crew.
2010 Aerial Photography data source: NAIP, USDA-FSA-APFO Aerial Photography Field Office.
Reference is N.O.A. Navigation Chart No. 11370.
** Shoalest Sounding per Quarter Per Reach.
*** High frequency (200 kHz) survey data represents the first signal return at a sounding location and will include suspended solids, known as "fluff", if present. Low frequency (20 kHz) survey data normally penetrates through this "fluff" layer to depict elevations of consolidated bottom material. Low frequency accuracies may vary depending on channel conditions and fathometer settings.

Sheet Reference Number
2 of 4
Revision Number:
3.8.9-20150202