



Distribution Liability: The data represents the results of data collection for a specific US Army Corps of Engineers project... It is only valid for its intended use, content, time and accuracy specifications.

U.S. ARMY CORPS OF ENGINEERS NEW ORLEANS DISTRICT

MISSISSIPPI RIVER DEEP-DRAFT LOCKS I.H.N.C. LOCK FOREBAY LK\_02\_IHN\_20230628\_AD\_5X5

Sheet Reference Number 2 of 4

Revision Number: 4-2-20(Rev 2)

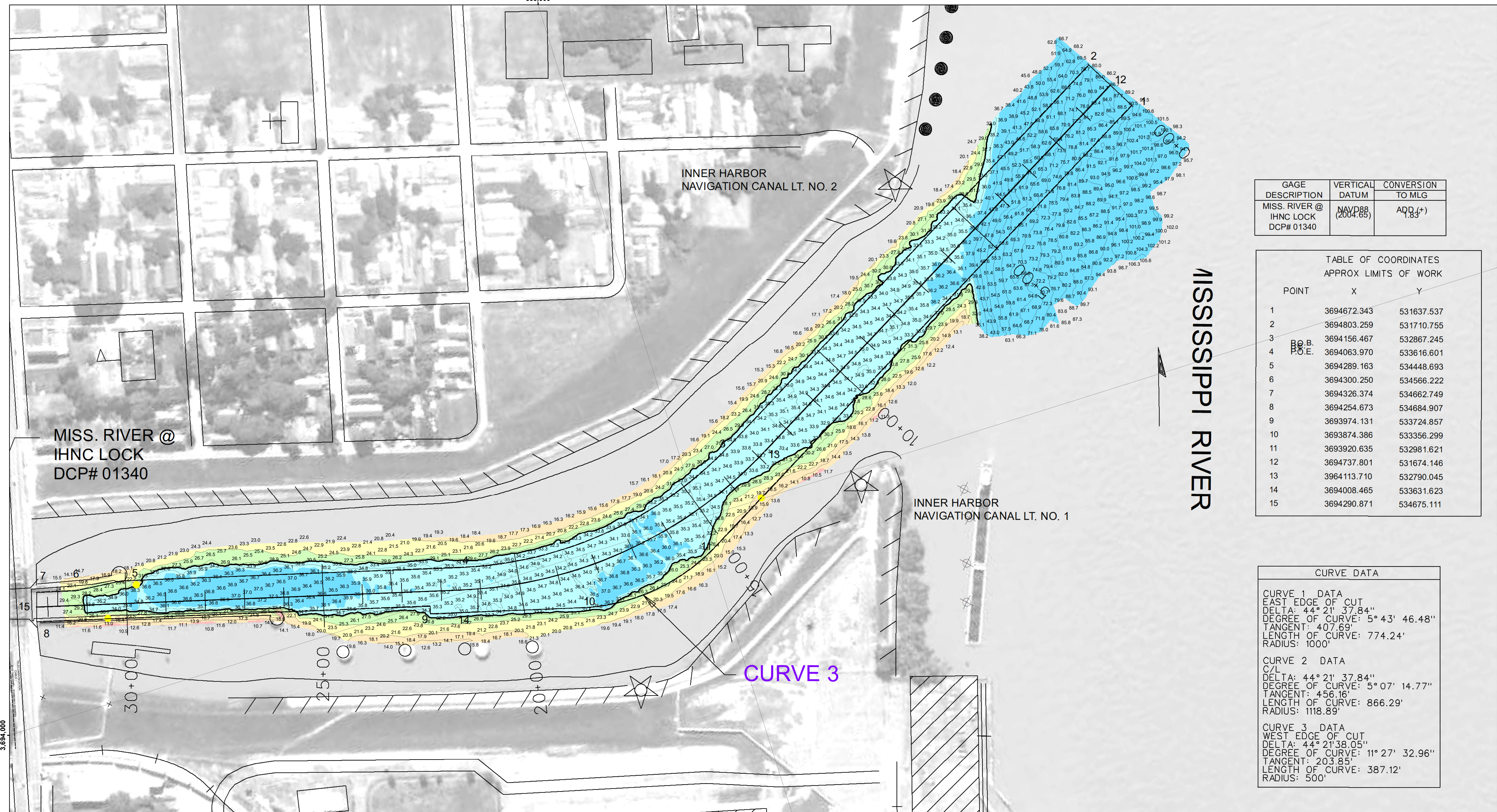
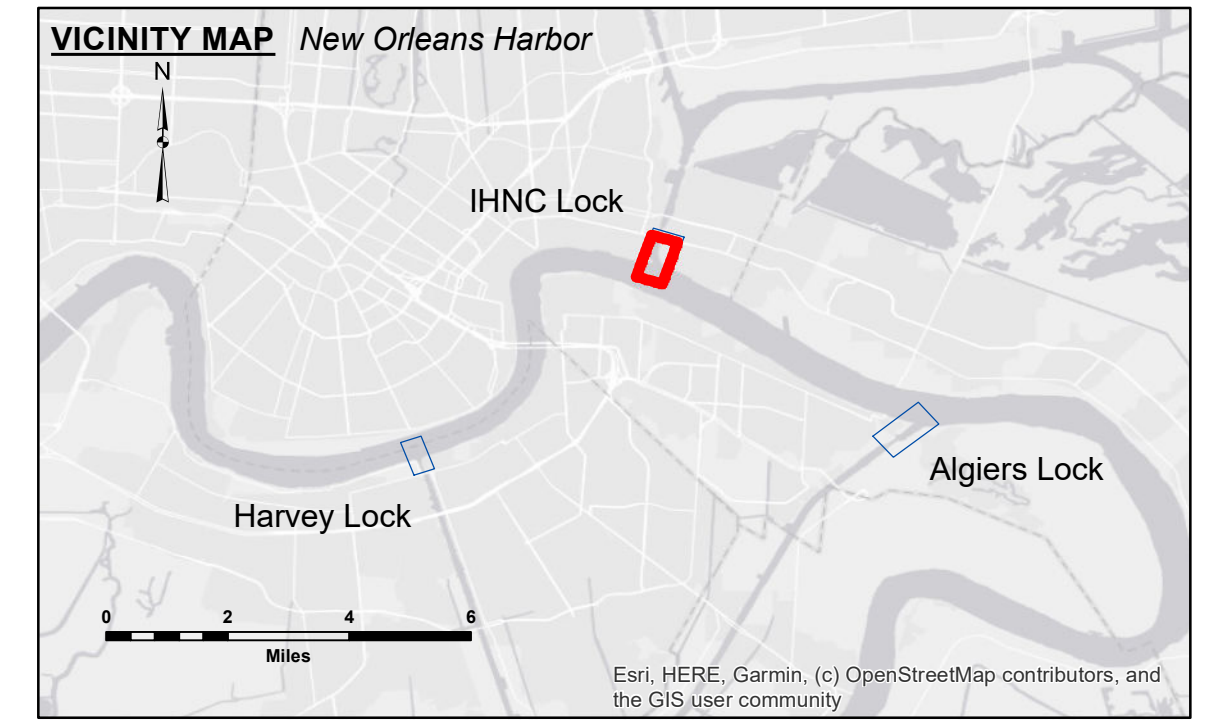


Table with 3 columns: GAGE DESCRIPTION, VERTICAL DATUM, CONVERSION TO MLG. Values include MISS. RIVER @ IHNC LOCK and NAVD88 (2004.65).

TABLE OF COORDINATES APPROX LIMITS OF WORK. Table with 3 columns: POINT, X, Y. Lists points 1 through 15 with their respective coordinates.

CURVE DATA. Table with 3 sections: CURVE 1 DATA, CURVE 2 DATA, CURVE 3 DATA. Lists curve parameters like DELTA, DEGREE OF CURVE, LENGTH OF CURVE, and RADIUS.



LEGEND. Table listing symbols for Federal Navigation Channel, Cable Area, Placement Area, Shoalest Sounding, Anchorage Area, Obstruction Point, Wrecks-Submerged, Beacons, and Navigation Buoys.

Navigation aids information including LWRP, Gage Reading, Sea Conditions, Vessel Name, Survey Type, and Sounding Frequency. Includes a compass rose and a scale bar in feet.

NOTES: Horizontal Coordinate System: North American Datum of 1983 (NAD83), projected to the State Plane Coordinate System (SPCS), Louisiana South Zone. Vertical Datum: Soundings are shown in feet and indicate depths below Mean Low Gulf (MLG).