

APPROX LIMITS OF WORK		
POINT NO.	X	Y
1	3320949.835	701715.189
2	3321101.868	701504.689
3	3321639.985	701174.795
4	3322118.775	700599.761
5	3322230.961	701181.825
6	3321961.024	701200.779
7	3321811.849	701292.296
8	3321770.968	701340.817
9	3321806.013	701399.342
10	3321042.882	701866.860

US Army Corps of Engineers District: CEMVN

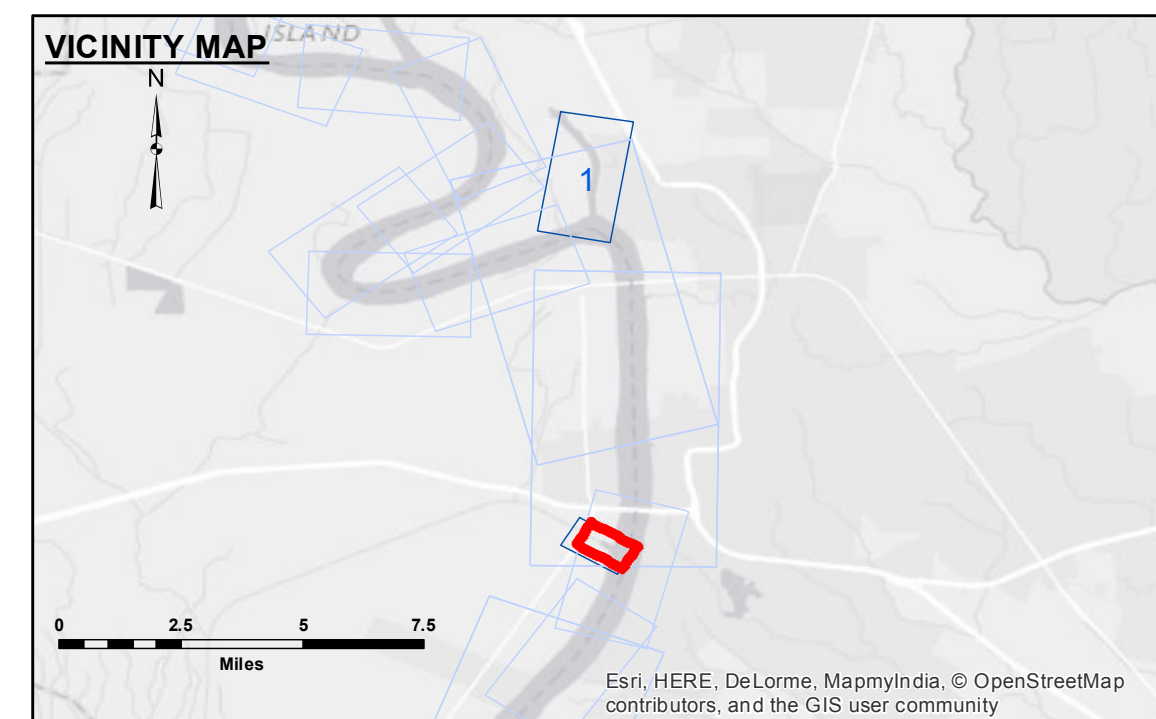
FACE VALUE: The information depicted on this map represents the results of a hydrographic survey conducted for the purpose of determining the general condition existing at that time. The user is responsible for the accuracy, completeness, reliability, usability or suitability of the information for any particular purpose of the user's own making. The user is responsible for the accuracy, completeness, reliability, usability or suitability of the information for any particular purpose of the user's own making. The user is responsible for the accuracy, completeness, reliability, usability or suitability of the information for any particular purpose of the user's own making. The user is responsible for the accuracy, completeness, reliability, usability or suitability of the information for any particular purpose of the user's own making.

Submitted:	Surveyed By: SPPM
Recommended:	Plotted By: BITD
Approved:	Checked By: RMI

U.S. ARMY CORPS OF ENGINEERS
NEW ORLEANS DISTRICT

BATON ROUGE HARBOR
PORT ALLEN LOCK FOREBAY
LK_04_PAL_20150915
15 September 2015

Sheet Reference Number
1 of 1



- - - Federal Navigation Channel	○ Cable Area	□ Borrow Area	● Shoalest Sounding**
— Federal Navigation Center Line	□ Placement Area	★ Beacon, General	▲ Red Navigation Buoy
— As-built Pipeline/Cable	□ Anchorage Area	◆ Green Navigation Buoy	
..... Unconfirmed Pipeline/Cable	✕ Obstruction Point		
— Project Depth Contour	✉ Wrecks-Submerged		

Gage Reading: PA FOREBAY: 9.03 NGVD
Sea Conditions: CALM
Vessel Name: OB-167
Survey Type: CONDITION
Sounding Frequency*:** HIGH

NOTES:
 Horizontal Coordinate System: North American Datum of 1983 (NAD83), projected to the State Plane Coordinate System (SPCS), Louisiana South Zone. Distance units in U.S. Survey Feet.
 Vertical Datum: Soundings are shown in feet and indicate depths below National Geodetic Vertical Datum of 1929 (NGVD29).
 Distances on the Mississippi River, above and below Head of Passes are shown at 1 mile intervals.
 The location of navigation aids are base on and provided by the U.S. Coast Guard.
 2012 Aerial Photography data source: USGS DOQQ
 Reference is N.O.A. Navigation Chart No. 11370.
 *** Shoalest Sounding per Quarter per Reach.
 *** High frequency (200 kHz) survey data represents the first signal return at a sounding location and will include suspended solids, known as "fluff", if present. Low frequency (20 kHz) survey data normally penetrates through this "fluff" layer to depict elevations of consolidated bottom material. Low frequency accuracies may vary depending on channel conditions and fathometer settings.

