

TABLE OF COORDINATES

POINT NO.	X	Y
1	3320949.835	701715.189
2	3321101.868	701504.689
3	3321639.985	701174.795
4	3322118.775	700599.761
5	3322230.961	701181.825
6	3321961.024	701200.779
7	3321811.849	701292.296
8	3321770.968	701340.817
9	3321806.013	701399.342
10	3321042.882	701866.860

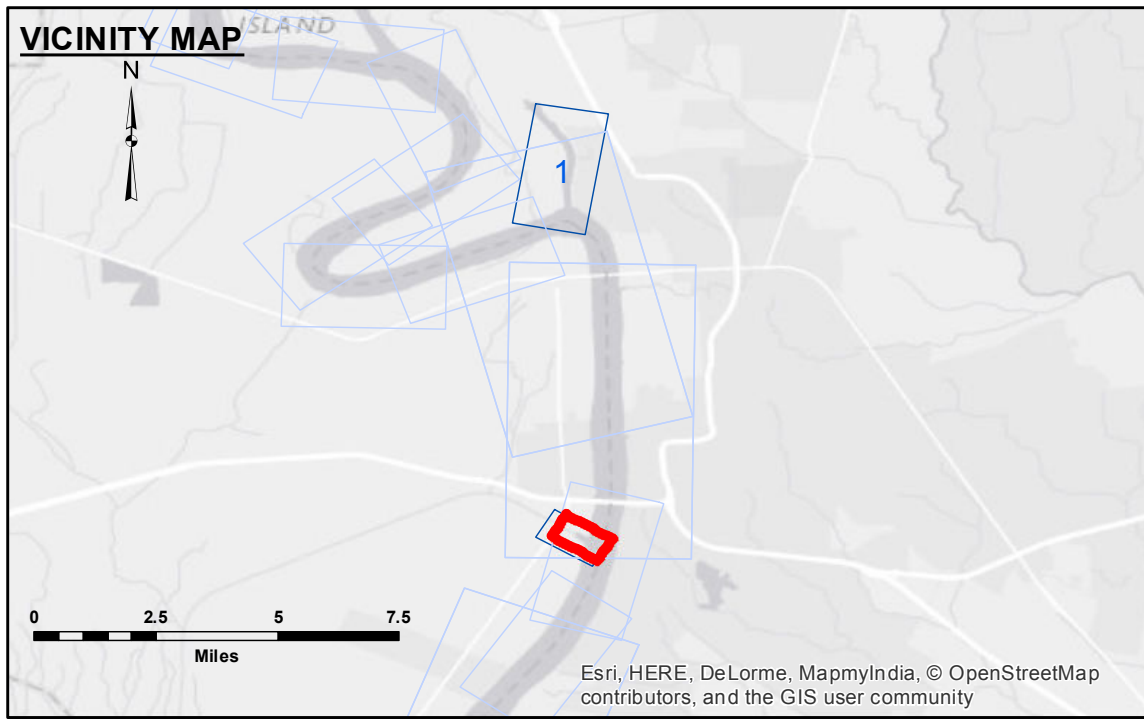


**DISCLAIMER:** The United States Government furnishes these data and the recipient accepts and uses them with the express understanding that the Government makes no warranty, expressed or implied, concerning the accuracy, completeness, reliability, usability or suitability for any particular purpose of the information. The user is responsible for the results. The user shall indemnify, defend and hold the United States Government harmless from and against all claims, damages, losses and expenses, including reasonable attorneys' fees, that may be incurred by the United States Government as a result of the use of the information. The information depicted on this map represents the results of a survey conducted by the United States Army Corps of Engineers and is not to be used for any purpose other than that for which it was intended. The user shall not be held responsible for any errors or omissions in the information. The user shall not be held responsible for any errors or omissions in the information. The user shall not be held responsible for any errors or omissions in the information.

Submitted:	Surveyed By: SP/PS
Recommended:	Plotted By: BID
Approved:	Checked By: RM

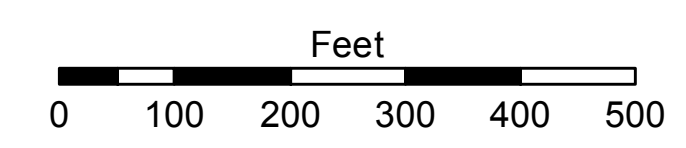
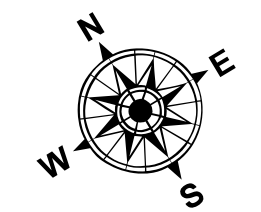
**BATON ROUGE HARBOR  
PORT ALLEN LOCK FOREBAY  
LK\_04\_PAL\_20151015  
15 October 2015**

**Sheet Reference Number  
1 of 1**



**LEGEND**

--- Federal Navigation Channel	○ Cable Area	□ Borrow Area
— Federal Navigation Center Line	□ Placement Area	● Shoalest Sounding**
— As-built Pipeline/Cable	□ Anchorage Area	☆ Beacon, General
..... Unconfirmed Pipeline/Cable	⊗ Obstruction Point	◆ Red Navigation Buoy
— Project Depth Contour	⚓ Wrecks-Submerged	◆ Green Navigation Buoy
		■ -8' and above
		■ -8' to -10'
		■ -10' to -12'
		■ -12' and below



Gage Reading: PA FOREBAY: 9.25 NGVD  
 Sea Conditions: CALM  
 Vessel Name: LAFORCHE  
 Survey Type: CONDITION  
 Sounding Frequency\*\*\*: HIGH

**NOTES:**  
 Horizontal Coordinate System: North American Datum of 1983 (NAD83), projected to the State Plane Coordinate System (SPCS), Louisiana South Zone. Distance units in U.S. Survey Feet.  
 Vertical Datum: Soundings are shown in feet and indicate depths below National Geodetic Vertical Datum of 1929 (NGVD29).  
 Distances on the Mississippi River, above and below Head of Passes are shown at 1 mile intervals.  
 The location of navigation aids are base on and provided by the U.S. Coast Guard.  
 2012 Aerial Photography data source: USGS DOQQ  
 Reference is N.O.A. Navigation Chart No. 11370.  
 \*\*\* Shoalest Sounding per Quarter per Reach.  
 \*\*\* High frequency (200 kHz) survey data represents the first signal return at a sounding location and will include suspended solids, known as "fluff", if present. Low frequency (20 kHz) survey data normally penetrates through this "fluff" layer to depict elevations of consolidated bottom material. Low frequency accuracies may vary depending on channel conditions and fathometer settings.