

TABLE OF COORDINATES

POINT NO.	X	Y
1	3320949.835	701715.189
2	3321101.868	701504.689
3	3321639.985	701174.795
4	3322118.775	700599.761
5	3322230.961	701181.825
6	3321961.024	701200.779
7	3321811.849	701292.296
8	3321770.968	701340.817
9	3321806.013	701399.342
10	3321042.882	701866.860



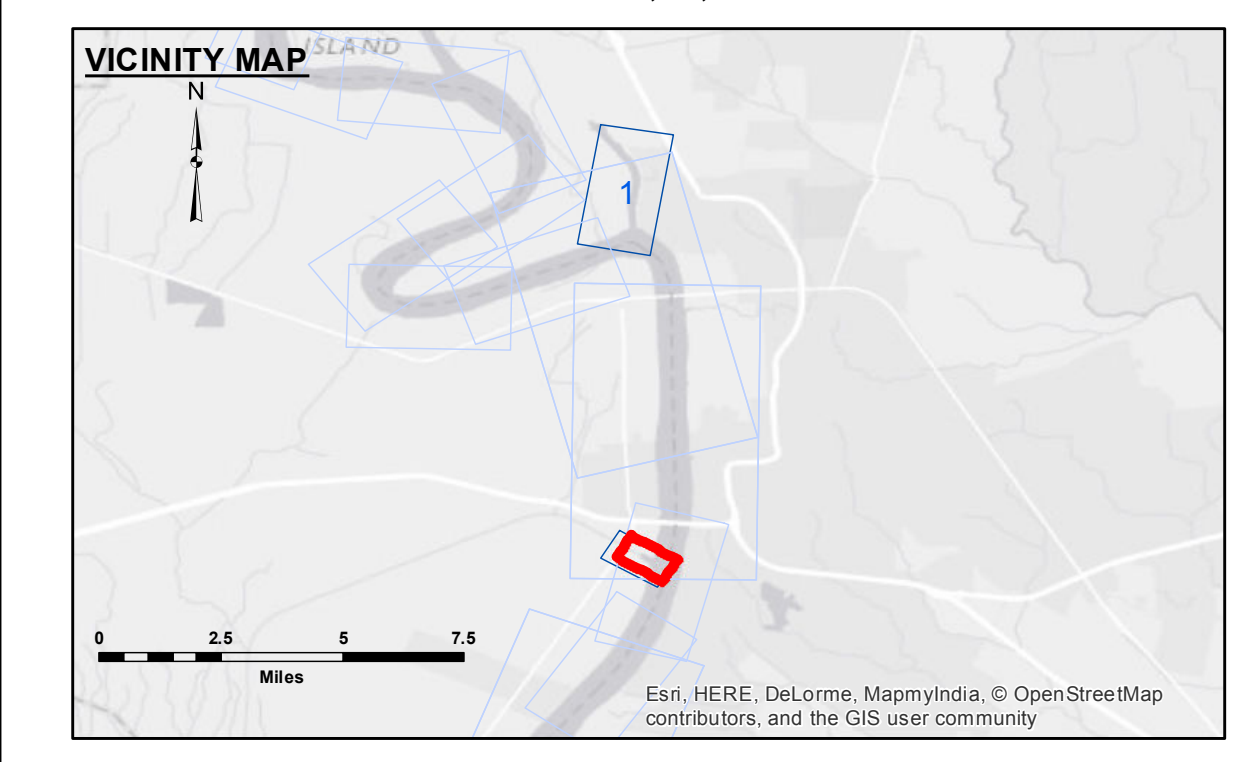
DISCLAIMER
 The data represented on this map represents the results of a collection of data for a specific project. The data is not intended to be used for any purpose other than that for which it was collected. The user is responsible for the accuracy, completeness, and reliability of the data. The Corps of Engineers does not warrant the accuracy, completeness, or reliability of the data for any purpose other than that for which it was collected. The Corps of Engineers does not assume any liability for any damages or losses resulting from the use of this data. The Corps of Engineers does not assume any liability for any damages or losses resulting from the use of this data. The Corps of Engineers does not assume any liability for any damages or losses resulting from the use of this data.

U.S. ARMY CORPS OF ENGINEERS NEW ORLEANS DISTRICT	
Submitted:	DR:JH
Recommended:	AO
Approved:	RM

**BATON ROUGE HARBOR
 PORT ALLEN LOCK FOREBAY
 LK_04_PAL_20151209
 09 December 2015**

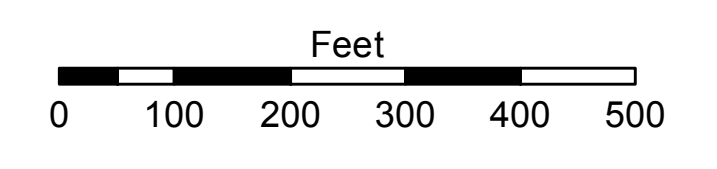
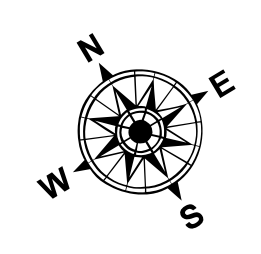
**Sheet Reference Number
 1 of 1**

Revision Number:
 3.8.0-20150202



LEGEND

--- Federal Navigation Channel	● Cable Area	□ Borrow Area	● Shoalest Sounding**
— Federal Navigation Center Line	▭ Placement Area	★ Beacon, General	■ -8' and above
— As-built Pipeline/Cable	⊗ Anchorage Area	♦ Red Navigation Buoy	■ -8' to -10'
..... Unconfirmed Pipeline/Cable	⊗ Obstruction Point	♦ Green Navigation Buoy	■ -10' to -12'
— Project Depth Contour	✈ Wrecks-Submerged		■ -12' and below



Gage Reading: PORT ALLEN: 29.3 NGVD
 Sea Conditions: CALM
 Vessel Name: M/V OB 189
 Survey Type: CONDITION
 Sounding Frequency***: HIGH

NOTES:
 Horizontal Coordinate System:
 North American Datum of 1983 (NAD83), projected to the State Plane Coordinate System (SPCS), Louisiana South Zone. Distance units in U.S. Survey Feet.
 Vertical Datum:
 Soundings are shown in feet and indicate depths below National Geodetic Vertical Datum of 1929 (NGVD29).
 Distances on the Mississippi River, above and below Head of Passes are shown at 1 mile intervals.
 The location of navigation aids are base on and provided by the U.S. Coast Guard.
 2012 Aerial Photography data source: USGS DOQQ
 Reference is N.O.A.A. Navigation Chart No. 11370.
 *** Shoalest Sounding per Quarter per Reach.
 *** High frequency (200 kHz) survey data represents the first signal return at a sounding location and will include suspended solids, known as "fluff", if present. Low frequency (20 kHz) survey data normally penetrates through this "fluff" layer to depict elevations of consolidated bottom material. Low frequency accuracies may vary depending on channel conditions and fathometer settings.