

**TABLE OF COORDINATES**

APPROX LIMITS OF WORK

POINT NO.	X	Y
1	3320949.835	701715.189
2	3321101.868	701504.689
3	3321639.985	701174.795
4	3322118.775	700599.761
5	3322230.961	701181.825
6	3321961.024	701200.779
7	3321811.849	701292.296
8	3321770.968	701340.817
9	3321806.013	701399.342
10	3321042.882	701866.860



**DISCLAIMER:** The United States Government furnishes these data and the recipient accepts and uses them with the express understanding that they are not to be used for any purpose other than that for which they were prepared. The user is responsible for the accuracy, completeness, reliability, usability or suitability for any particular purpose of the information. The application of the data for other than its intended purpose, under no liability whatsoever to any person by reason of any use made thereof. These data belong to the Government. Therefore the recipient may not transfer, copy, reproduce, or disseminate these data to others without the express written consent of the Army Corps of Engineers and scores provided for the use of the hydrographical conditions which develop after the date of the information depicted on the map represents the results of a survey conducted on the date shown. The recipient is considered to represent the general condition existing at that time.

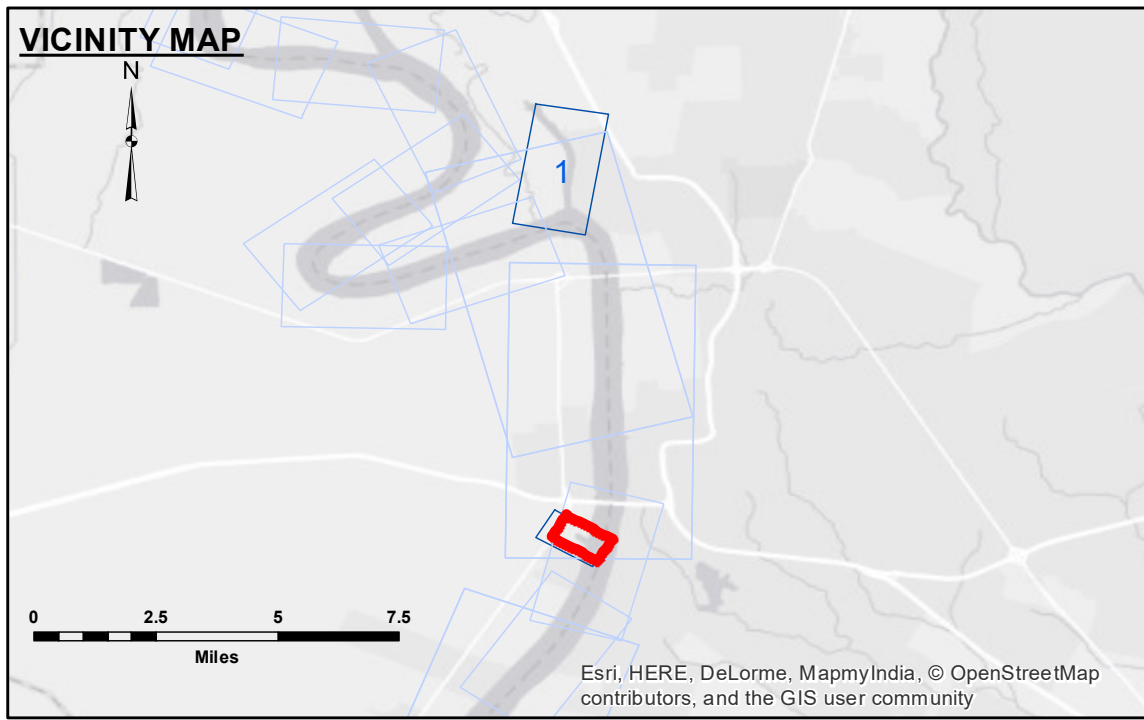
U.S. ARMY CORPS OF ENGINEERS  
NEW ORLEANS DISTRICT

Submitted:	Surveyed By: RYLAND/ADAMS
Recommended:	Plotted By: AO
Approved:	Checked By: AO

**BATON ROUGE HARBOR  
PORT ALLEN LOCK FOREBAY  
LK\_04\_PAL\_20171005\_AD**  
05 October 2017

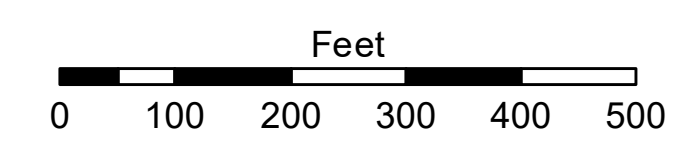
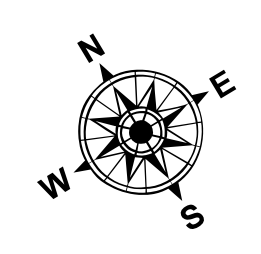
**Sheet Reference Number**  
1 of 1

Revision Number:  
3.12-20160811



**LEGEND**

--- Federal Navigation Channel	○ Cable Area	□ Borrow Area
— Federal Navigation Center Line	■ Placement Area	● Shoalest Sounding**
— As-built Pipeline/Cable	⊗ Anchorage Area	☆ Beacon, General
..... Unconfirmed Pipeline/Cable	⊗ Obstruction Point	◆ Red Navigation Buoy
— Project Depth Contour	⚓ Wrecks-Submerged	◆ Green Navigation Buoy
		■ -8' and above
		■ -8' to -10'
		■ -10' to -12'
		■ -12' and below



Gage Reading: PORT ALLEN FB: 7.45 NGVD  
 Sea Conditions: CALM  
 Vessel Name: M/V OB189  
 Survey Type: CONDITION  
 Sounding Frequency\*\*\*: HIGH

**NOTES:**  
 Horizontal Coordinate System: North American Datum of 1983 (NAD83), projected to the State Plane Coordinate System (SPCS), Louisiana South Zone. Distance units in U.S. Survey Feet.  
 Vertical Datum: Soundings are shown in feet and indicate depths below National Geodetic Vertical Datum of 1929 (NGVD29).  
 Distances on the Mississippi River, above and below Head of Passes are shown at 1 mile intervals.  
 The location of navigation aids are base on and provided by the U.S. Coast Guard.  
 2015 Aerial Photography data source: NAIP  
 Reference is N.O.A.A. Navigation Chart No. 11370.  
 \*\*\* Shoalest Sounding per Quarter per Reach.  
 \*\* High frequency (200 kHz) survey data represents the first signal return at a sounding location and will include suspended solids, known as "fluff", if present. Low frequency (20 kHz) survey data normally penetrates through this "fluff" layer to depict elevations of consolidated bottom material. Low frequency accuracies may vary depending on channel conditions and fathometer settings.