



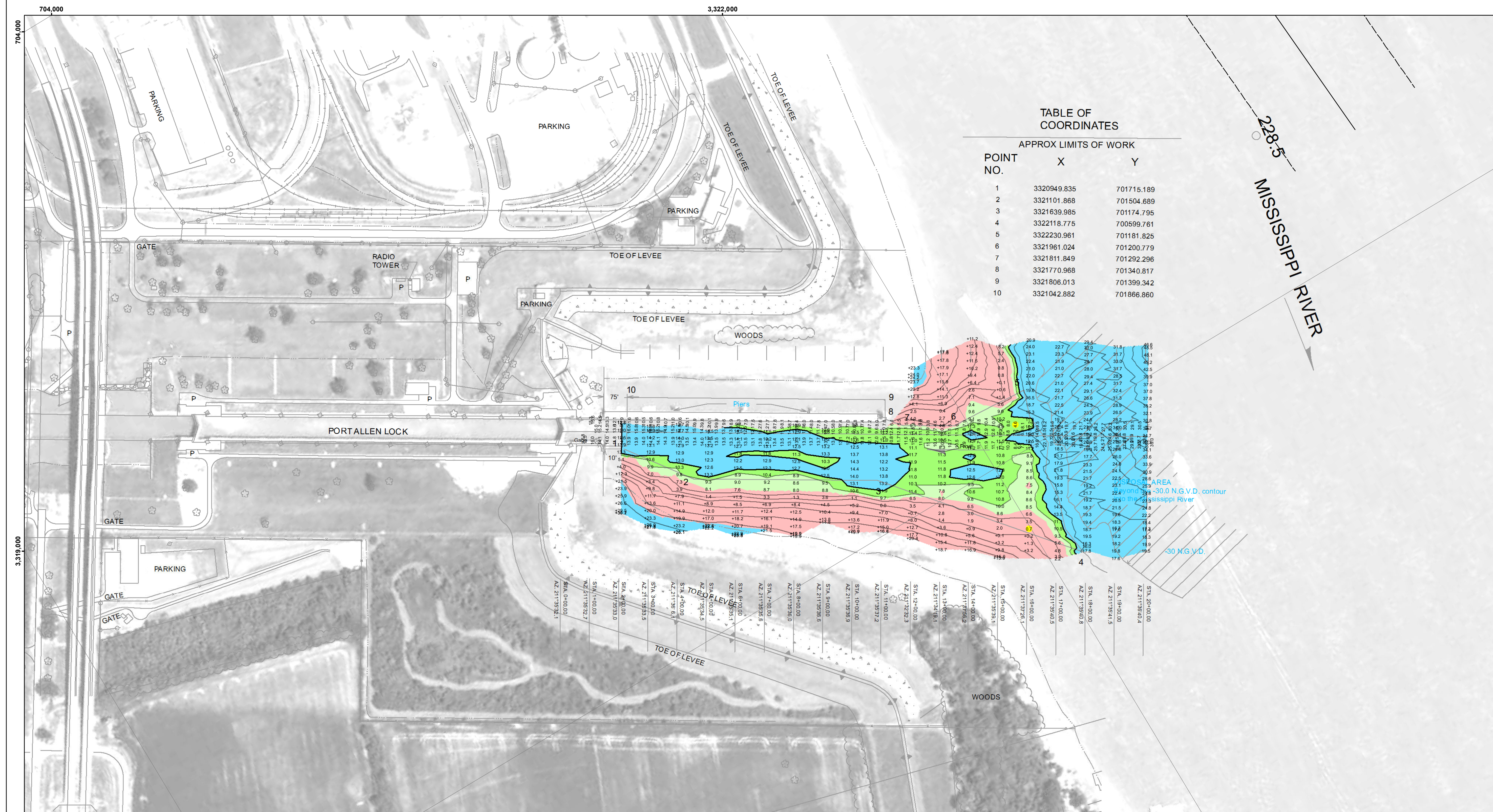
**DISCLAIMER**  
 The information depicted on this map represents the results of a general condition sounding at this time. The user is responsible for the accuracy, completeness, and reliability of the information for the intended purpose of the information. The user is responsible for the accuracy, completeness, and reliability of the information for the intended purpose of the information. The user is responsible for the accuracy, completeness, and reliability of the information for the intended purpose of the information.

**ACCESS AND USE**  
 The United States Government furnishes these data and the recipient accepts and uses them with the express understanding that the information is provided as is, without any warranty, expressed or implied concerning the accuracy, completeness, and reliability of the information for the intended purpose of the information. The user is responsible for the accuracy, completeness, and reliability of the information for the intended purpose of the information.

U.S. ARMY CORPS OF ENGINEERS NEW ORLEANS DISTRICT		
Submitted:	Surveyed By: RYLAND/SOUKI	Checked By: AC
Recommended:	Plotted By: BD	Approved:
Checked:	Chart Survey Section	Chart Waterways Maintenance Section

**BATON ROUGE HARBOR  
 PORT ALLEN LOCK FOREBAY  
 LK\_04\_PAL\_20180427\_CS**  
 27 April 2018

**Sheet Reference Number  
 1 of 1**



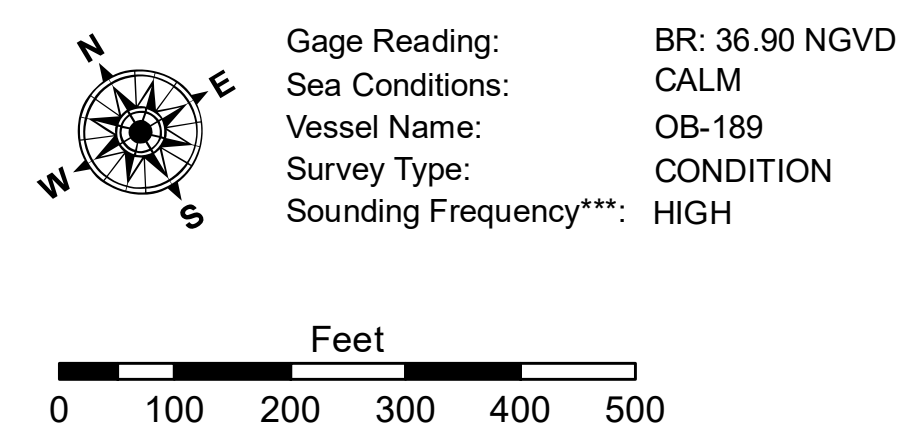
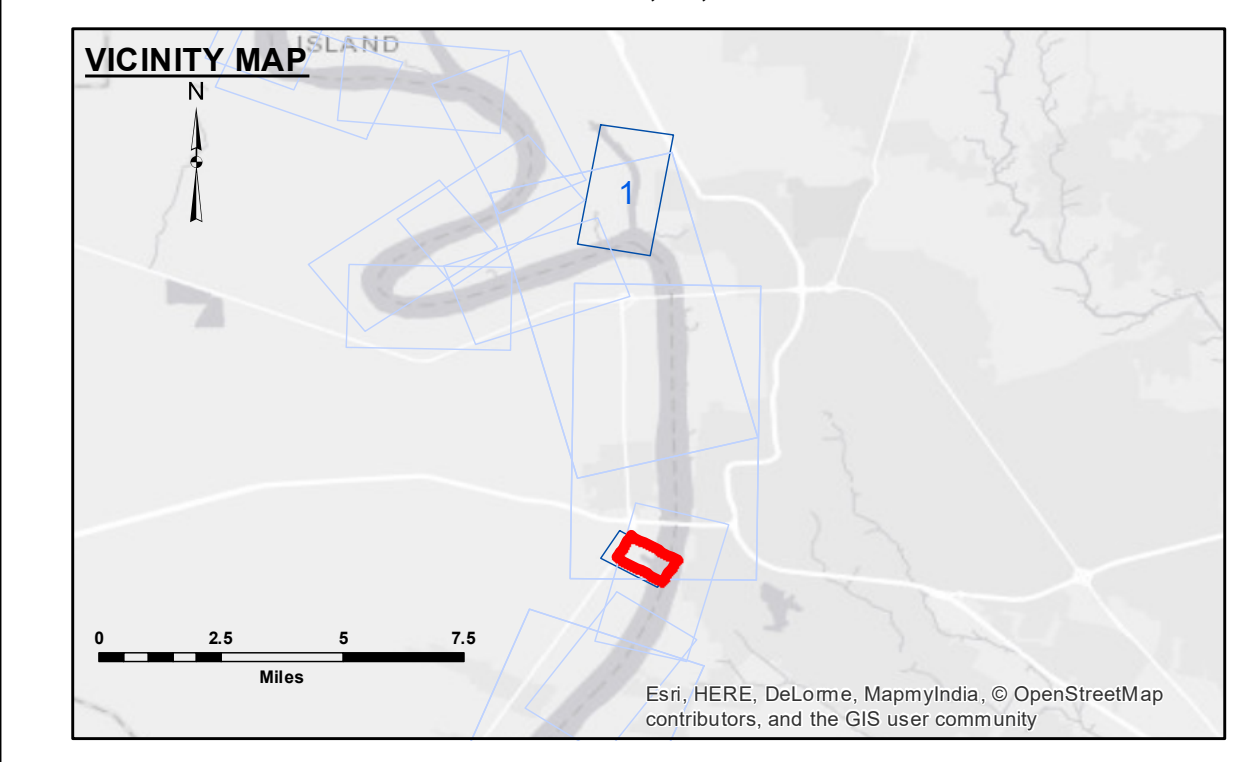
**TABLE OF COORDINATES**

APPROX LIMITS OF WORK

POINT NO.	X	Y
1	3320949.835	701715.189
2	3321101.868	701504.689
3	3321639.985	701174.795
4	3322118.775	700599.761
5	3322230.961	701181.825
6	3321961.024	701200.779
7	3321811.849	701292.296
8	3321770.968	701340.817
9	3321806.013	701399.342
10	3321042.882	701866.860

**LEGEND**

— Federal Navigation Channel	○ Cable Area	□ Borrow Area	● Shoalest Sounding**
— Federal Navigation Center Line	□ Placement Area	★ Beacon, General	▲ Red Navigation Buoy
— As-built Pipeline/Cable	□ Anchorage Area	◆ Green Navigation Buoy	■ -8' and above
..... Unconfirmed Pipeline/Cable	⊗ Obstruction Point		■ -8' to -10'
— Project Depth Contour	⚓ Wrecks-Submerged		■ -10' to -12'



**NOTES:**  
 Horizontal Coordinate System: North American Datum of 1983 (NAD83), projected to the State Plane Coordinate System (SPCS), Louisiana South Zone. Distance units in U.S. Survey Feet.  
 Vertical Datum: Soundings are shown in feet and indicate depths below National Geodetic Vertical Datum of 1929 (NGVD29).  
 Distances on the Mississippi River, above and below Head of Passes are shown at 1 mile intervals.  
 The location of navigation aids are based on and provided by the U.S. Coast Guard.  
 2015 Aerial Photography data source: NAIP  
 Reference is N.O.A.A. Navigation Chart No. 11370.  
 \*\* Shoalest Sounding per Quarter per Reach.  
 \*\*\* High frequency (200 kHz) survey data represents the first signal return at a sounding location and will include suspended solids, known as "fluff", if present. Low frequency (20 kHz) survey data normally penetrates through this "fluff" layer to depict elevations of consolidated bottom material. Low frequency accuracies may vary depending on channel conditions and fathometer settings.