

TABLE OF COORDINATES

APPROX LIMITS OF WORK

POINT NO.	X	Y
1	3320949.835	701715.189
2	3321101.868	701504.689
3	3321639.985	701174.795
4	3322118.775	700599.761
5	3322230.961	701181.825
6	3321961.024	701200.779
7	3321811.849	701292.296
8	3321770.968	701340.817
9	3321806.013	701399.342
10	3321042.882	701866.860



DISCLAIMER

The information depicted on this map represents the results of a survey conducted by the U.S. Army Corps of Engineers. The user is responsible for the accuracy, completeness, reliability, usability or suitability for any particular purpose of the information. The user is responsible for the accuracy, completeness, reliability, usability or suitability for any particular purpose of the information. The user is responsible for the accuracy, completeness, reliability, usability or suitability for any particular purpose of the information. The user is responsible for the accuracy, completeness, reliability, usability or suitability for any particular purpose of the information.

U.S. ARMY CORPS OF ENGINEERS
NEW ORLEANS DISTRICT

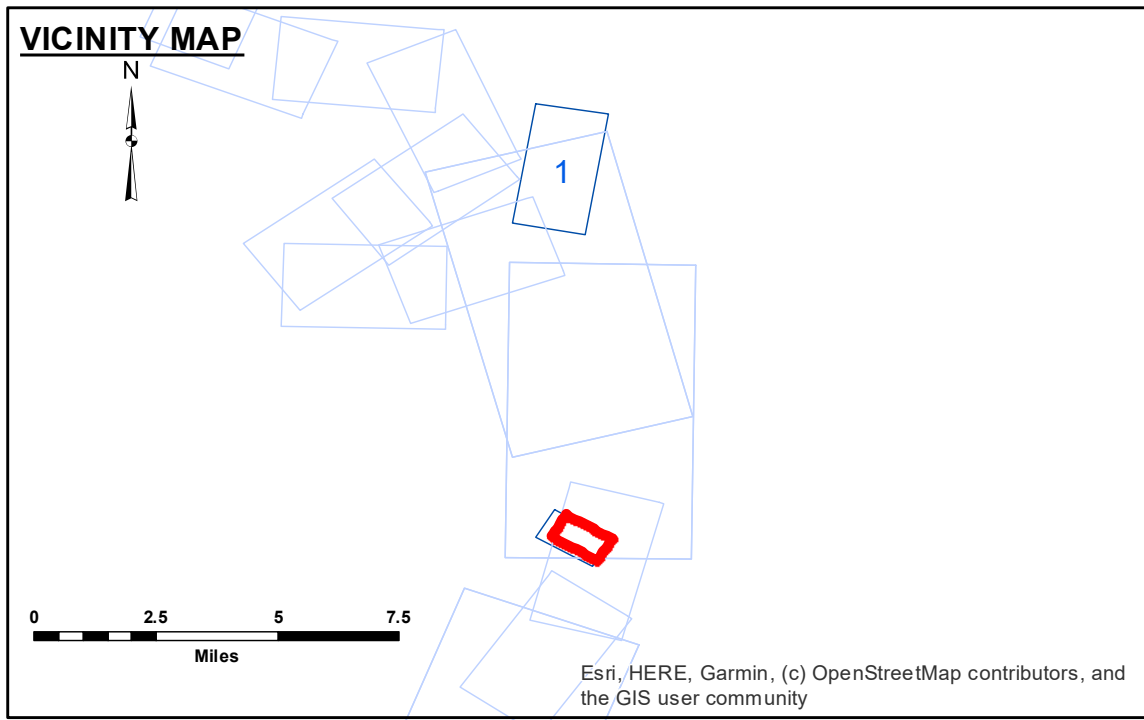
Submitted:	Surveyed By: RYLAND/HOSHMAN
Recommended:	Plotted By: BD
Approved:	Checked By: AC

**BATON ROUGE HARBOR
PORT ALLEN LOCK FOREBAY
LK_04_PAL_20200107_CS**

07 January 2020

Sheet Reference Number
1 of 1

Revision Number:
4.0-201 90702



LEGEND

--- Federal Navigation Channel	● Cable Area	□ Borrow Area	● Shoalest Sounding**
— Federal Navigation Center Line	■ Placement Area	★ Beacon, General	● -8' and above
— As-built Pipeline/Cable	⊗ Anchorage Area	◆ Red Navigation Buoy	● -8' to -10'
..... Unconfirmed Pipeline/Cable	⊗ Obstruction Point	◆ Green Navigation Buoy	● -10' to -12'
— Project Depth Contour	⚓ Wrecks-Submerged		● -12' and below

NOTES:

Horizontal Coordinate System:
North American Datum of 1983 (NAD83), projected to the State Plane Coordinate System (SPCS), Louisiana South Zone. Distance units in U.S. Survey Feet.

Vertical Datum:
Soundings are shown in feet and indicate depths below National Geodetic Vertical Datum of 1929 (NGVD29).

Distances on the Mississippi River, above and below Head of Passes are shown at 1 mile intervals.

The location of navigation aids are based on and provided by the U.S. Coast Guard.

2015 Aerial Photography data source: NAIP
Reference is N.O.A.A. Navigation Chart No. 11370.

** Shoalest Sounding per Quarter per Reach.

*** High frequency (200 kHz) survey data represents the first signal return at a sounding location and will include suspended solids, known as "fluff", if present. Low frequency (20 kHz) survey data normally penetrates through this "fluff" layer to depict elevations of consolidated bottom material. Low frequency accuracies may vary depending on channel conditions and fathometer settings.

Gage Reading: PA: 29.10 NGVD
Sea Conditions: CALM
Vessel Name: OB-189
Survey Type: CONDITION
Sounding Frequency***: HIGH

Scale: 0 100 200 300 400 500 Feet