

**TABLE OF COORDINATES**

APPROX LIMITS OF WORK

POINT NO.	X	Y
1	3320949.835	701715.189
2	3321101.868	701504.689
3	3321639.985	701174.795
4	3322118.775	700599.761
5	3322230.961	701181.825
6	3321961.024	701200.779
7	3321811.849	701292.296
8	3321770.968	701340.817
9	3321806.013	701399.342
10	3321042.882	701866.860



**DISCLAIMER:** The data represents the results of data collection processing for a specific US Army Corps of Engineers project. The data is only valid for its intended use, control, time and accuracy specifications. The user is responsible for the results. The application of the data for other than its intended purpose is not recommended. The application of the data for other than its intended purpose is not recommended. The application of the data for other than its intended purpose is not recommended. The application of the data for other than its intended purpose is not recommended.

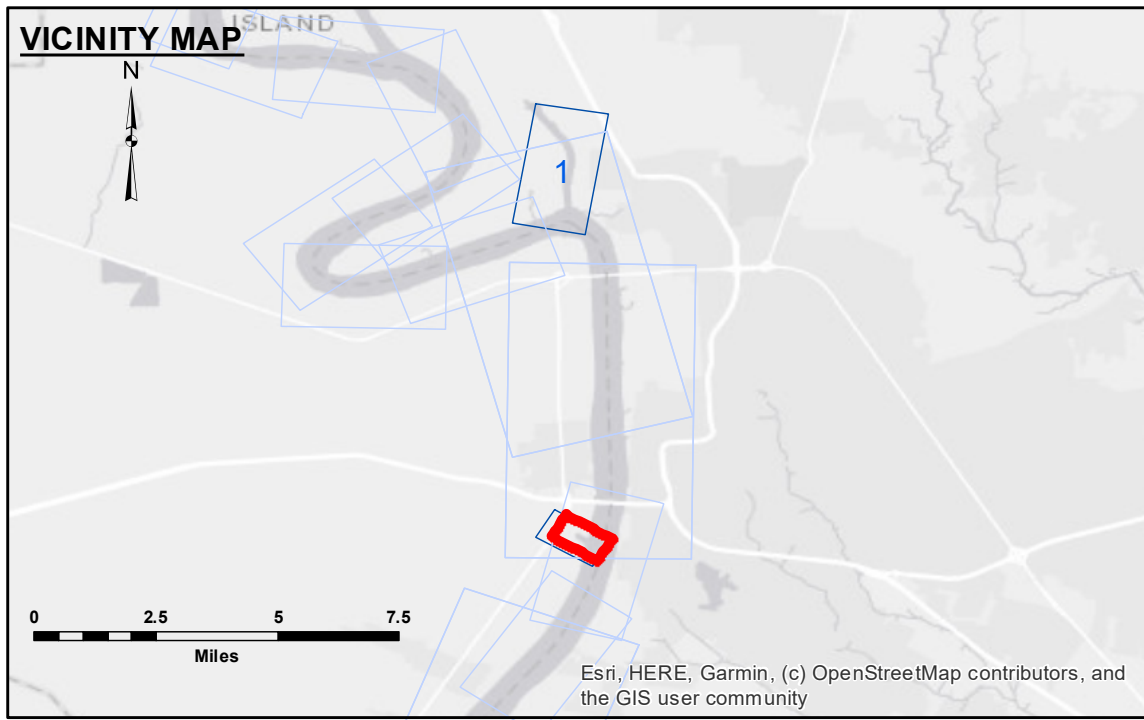
U.S. ARMY CORPS OF ENGINEERS  
NEW ORLEANS DISTRICT

Submitted:	Surveyed By: RYLAND/ADAMS
Recommended:	Plotted By: BD
Approved:	Checked By: BD

**BATON ROUGE HARBOR  
PORT ALLEN LOCK FOREBAY  
LK\_04\_PAL\_20201120\_CS**  
20 November 2020

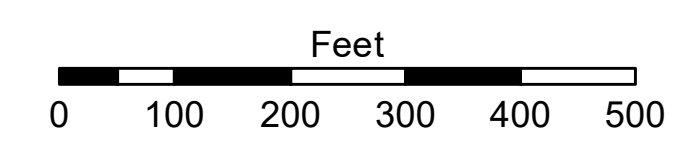
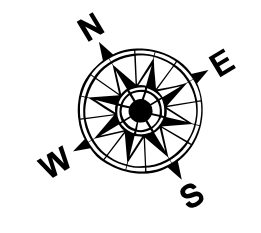
**Sheet Reference Number**  
1 of 1

Revision Number:  
4.1-20191105



**LEGEND**

--- Federal Navigation Channel	● Cable Area	□ Borrow Area	● Shoalest Sounding**
— Federal Navigation Center Line	□ Placement Area	★ Beacon, General	■ -8' and above
— As-built Pipeline/Cable	□ Anchorage Area	◆ Red Navigation Buoy	■ -8' to -10'
..... Unconfirmed Pipeline/Cable	✕ Obstruction Point	◆ Green Navigation Buoy	■ -10' to -12'
— Project Depth Contour	✙ Wrecks-Submerged		■ -12' and below



Gage Reading: BR: 12.50 NGVD  
Sea Conditions: CALM  
Vessel Name: OB-189  
Survey Type: CONDITION  
Sounding Frequency\*\*\*: HIGH

**NOTES:**  
Horizontal Coordinate System: North American Datum of 1983 (NAD83), projected to the State Plane Coordinate System (SPCS), Louisiana South Zone. Distance units in U.S. Survey Feet.  
Vertical Datum: Soundings are shown in feet and indicate depths below National Geodetic Vertical Datum of 1929 (NGVD29).  
Distances on the Mississippi River, above and below Head of Passes are shown at 1 mile intervals.  
The location of navigation aids are base on and provided by the U.S. Coast Guard.  
2015 Aerial Photography data source: NAIP  
Reference is N.O.A.A. Navigation Chart No. 11370.  
\*\*\* Shoalest Sounding per Quarter per Reach.  
\*\*\* High frequency (200 kHz) survey data represents the first signal return at a sounding location and will include suspended solids, known as "fluff", if present. Low frequency (20 kHz) survey data normally penetrates through this "fluff" layer to depict elevations of consolidated bottom material. Low frequency accuracies may vary depending on channel conditions and fathometer settings.