

TABLE OF COORDINATES

APPROX LIMITS OF WORK

POINT NO.	X	Y
1	3320949.835	701715.189
2	3321101.868	701504.689
3	3321639.985	701174.795
4	3322118.775	700599.761
5	3322230.961	701181.825
6	3321961.024	701200.779
7	3321811.849	701292.296
8	3321770.968	701340.817
9	3321806.013	701399.342
10	3321042.882	701866.860



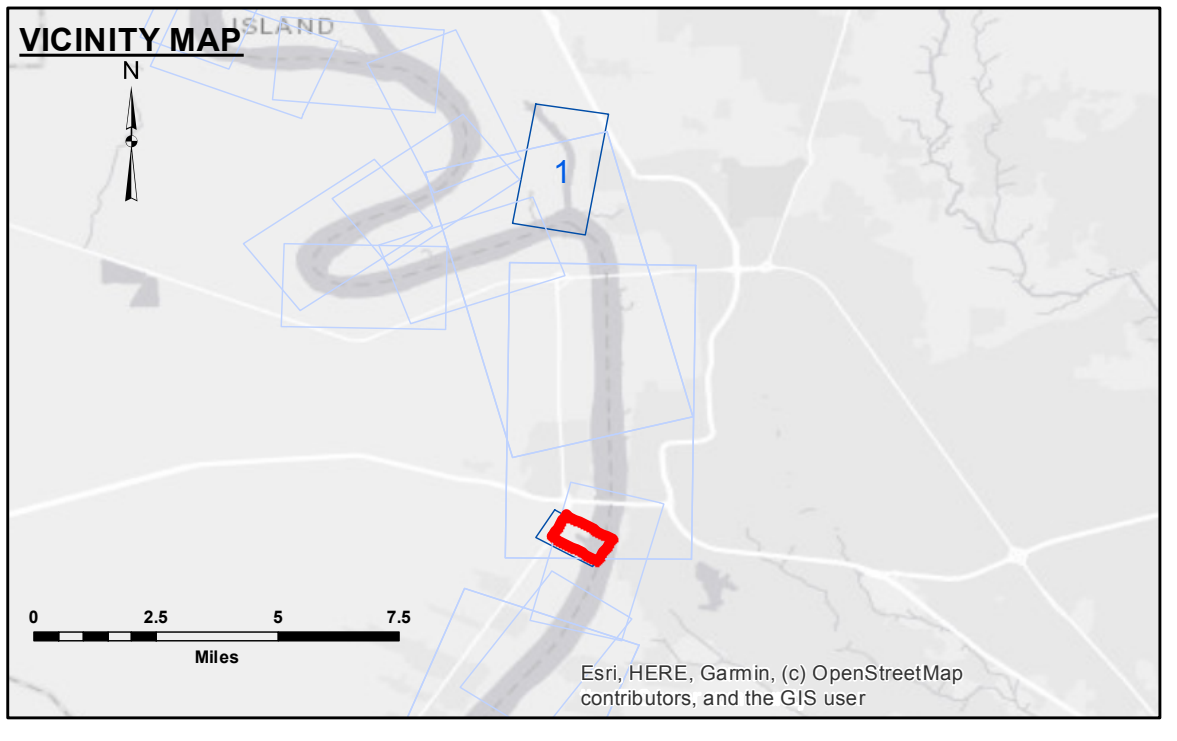
DISCLAIMER: The United States Government furnishes these data and the recipient accepts and uses them with the express understanding that they are not to be used for any purpose other than that for which they were prepared. The user is responsible for the accuracy, completeness, and reliability of the data for their intended use. The Corps of Engineers does not warrant the accuracy, completeness, or reliability of the data for any other purpose. The Corps of Engineers is not responsible for any damage or injury resulting from the use of these data. The Corps of Engineers is not responsible for any damage or injury resulting from the use of these data. The Corps of Engineers is not responsible for any damage or injury resulting from the use of these data.

U.S. ARMY CORPS OF ENGINEERS
NEW ORLEANS DISTRICT

Submitted:	Surveyed By: RYLAND/MOLLERE
Recommended:	Plotted By: BD
Approved:	Checked By: AC

**BATON ROUGE HARBOR
PORT ALLEN LOCK FOREBAY
LK_04_PAL_20210630_CS**

30 June 2021



LEGEND

--- Federal Navigation Channel	○ Cable Area	□ Borrow Area	● Shoalest Sounding**
— Federal Navigation Center Line	□ Placement Area	★ Beacon, General	● -8' and above
— As-built Pipeline/Cable	□ Anchorage Area	◆ Red Navigation Buoy	● -8' to -10'
..... Unconfirmed Pipeline/Cable	✕ Obstruction Point	◆ Green Navigation Buoy	● -10' to -12'
— Project Depth Contour	✶ Wrecks-Submerged		● -12' and below

Gage Reading: PAL FB: 22.5 NGVD
 Sea Conditions: CALM
 Vessel Name: OB-169
 Survey Type: CONDITION
 Sounding Frequency***: HIGH

Vertical Datum: North American Datum of 1983 (NAD83), projected to the State Plane Coordinate System (SPCS), Louisiana South Zone. Distance units in U.S. Survey Feet.

Vertical Datum: Soundings are shown in feet and indicate depths below National Geodetic Vertical Datum of 1929 (NGVD29).

Distances on the Mississippi River, above and below Head of Passes are shown at 1 mile intervals.

The location of navigation aids are base on and provided by the U.S. Coast Guard.

2015 Aerial Photography data source: NAIP
 Reference is N.O.A.A. Navigation Chart No. 11370.
 *** Shoalest Sounding per Quarter per Reach.

Notes: High frequency (200 kHz) survey data represents the first signal return at a sounding location and will include suspended solids, known as "fluff", if present. Low frequency (20 kHz) survey data normally penetrates through this "fluff" layer to depict elevations of consolidated bottom material. Low frequency accuracies may vary depending on channel conditions and fathometer settings.

Sheet Reference Number
1 of 1

Revision Number:
4.1-20191105