

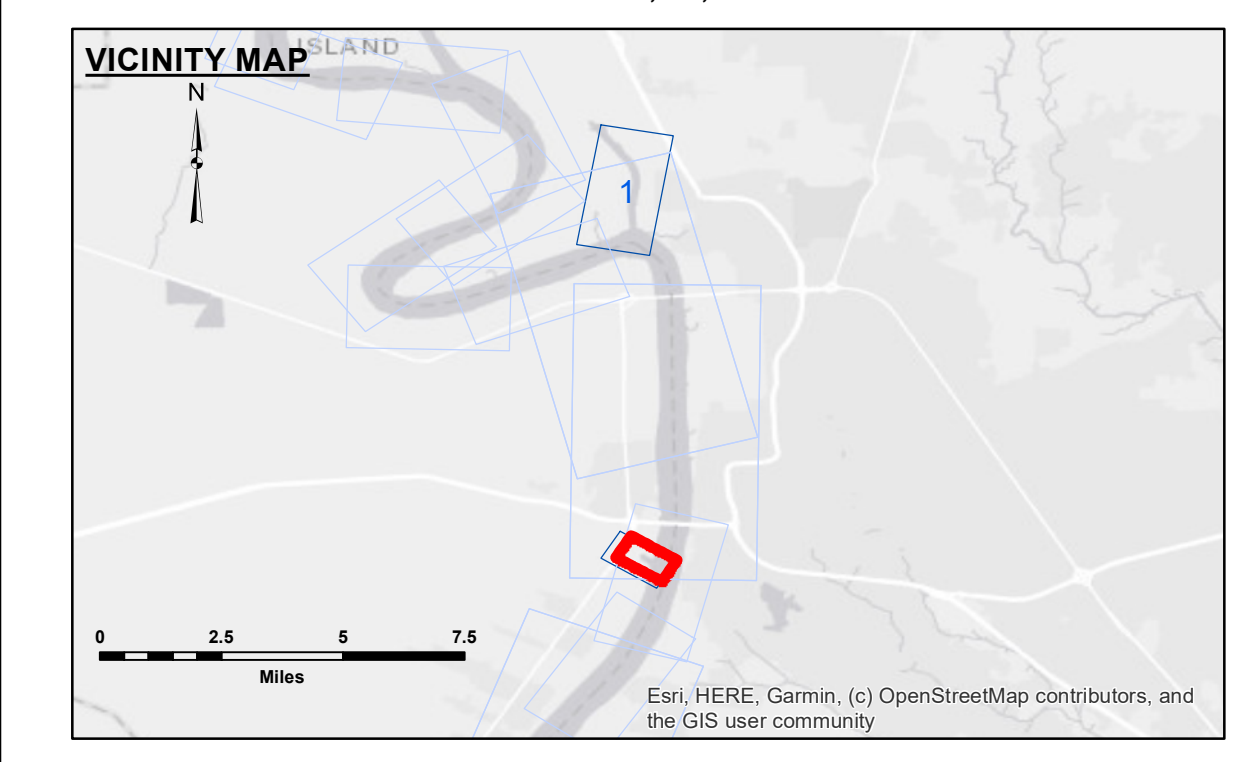
**TABLE OF COORDINATES**

APPROX LIMITS OF WORK

POINT NO.	X	Y
1	3320949.835	701715.189
2	3321101.868	701504.689
3	3321639.985	701174.795
4	3322118.775	700599.761
5	3322230.961	701181.825
6	3321961.024	701200.779
7	3321811.849	701292.296
8	3321770.968	701340.817
9	3321806.013	701399.342
10	3321042.882	701866.860

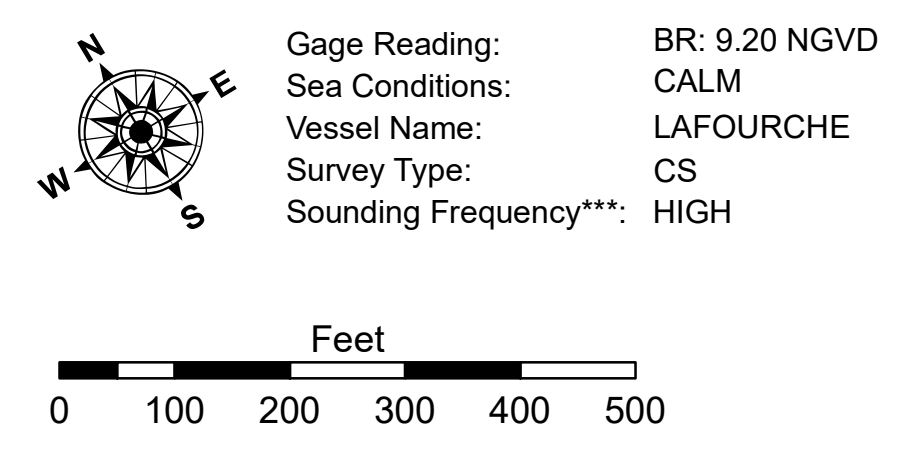
Stationing and Sounding Data:

STA. 14+00.00	14.2
STA. 15+00.00	15.1
STA. 16+00.00	16.0
STA. 17+00.00	17.0
STA. 18+00.00	18.0
STA. 19+00.00	19.0
STA. 20+00.00	20.0
STA. 21+00.00	21.0
STA. 22+00.00	22.0
STA. 23+00.00	23.0
STA. 24+00.00	24.0
STA. 25+00.00	25.0
STA. 26+00.00	26.0
STA. 27+00.00	27.0
STA. 28+00.00	28.0
STA. 29+00.00	29.0
STA. 30+00.00	30.0
STA. 31+00.00	31.0
STA. 32+00.00	32.0
STA. 33+00.00	33.0
STA. 34+00.00	34.0
STA. 35+00.00	35.0
STA. 36+00.00	36.0
STA. 37+00.00	37.0
STA. 38+00.00	38.0
STA. 39+00.00	39.0
STA. 40+00.00	40.0
STA. 41+00.00	41.0
STA. 42+00.00	42.0
STA. 43+00.00	43.0
STA. 44+00.00	44.0
STA. 45+00.00	45.0
STA. 46+00.00	46.0
STA. 47+00.00	47.0
STA. 48+00.00	48.0
STA. 49+00.00	49.0
STA. 50+00.00	50.0
STA. 51+00.00	51.0
STA. 52+00.00	52.0
STA. 53+00.00	53.0
STA. 54+00.00	54.0
STA. 55+00.00	55.0
STA. 56+00.00	56.0
STA. 57+00.00	57.0
STA. 58+00.00	58.0
STA. 59+00.00	59.0
STA. 60+00.00	60.0
STA. 61+00.00	61.0
STA. 62+00.00	62.0
STA. 63+00.00	63.0
STA. 64+00.00	64.0
STA. 65+00.00	65.0
STA. 66+00.00	66.0
STA. 67+00.00	67.0
STA. 68+00.00	68.0
STA. 69+00.00	69.0
STA. 70+00.00	70.0
STA. 71+00.00	71.0
STA. 72+00.00	72.0
STA. 73+00.00	73.0
STA. 74+00.00	74.0
STA. 75+00.00	75.0



**LEGEND**

--- Federal Navigation Channel	○ Cable Area	□ Borrow Area	■ -8' and above
— Federal Navigation Center Line	□ Placement Area	● Shoalest Sounding**	■ -8' to -10'
— As-built Pipeline/Cable	□ Anchorage Area	★ Beacon, General	■ -10' to -12'
..... Unconfirmed Pipeline/Cable	⊗ Obstruction Point	◆ Red Navigation Buoy	■ -12' and below
— Project Depth Contour	⚓ Wrecks-Submerged	◆ Green Navigation Buoy	



**DISCLAIMER**

The information depicted on this map represents the results of a survey conducted by the U.S. Army Corps of Engineers. The user is responsible for the accuracy, completeness, and reliability of the information for their intended use. The Corps of Engineers does not warrant the accuracy of the information for any purpose other than that for which it was prepared. The Corps of Engineers does not assume any liability for damages or losses resulting from the use of this information. The Corps of Engineers does not assume any liability for damages or losses resulting from the use of this information.

U.S. ARMY CORPS OF ENGINEERS  
NEW ORLEANS DISTRICT

Submitted:	Surveyed By: RYLAND/SIMMONS
Recommended:	Plotted By: JH
Approved:	Checked By: JH

**BATON ROUGE HARBOR  
PORT ALLEN LOCK FOREBAY  
LK\_04\_PAL\_20230620\_CS  
20 June 2023**

**Sheet Reference Number  
1 of 1**