

**TABLE OF COORDINATES**

APPROX LIMITS OF WORK

POINT NO.	X	Y
1	3320949.835	701715.189
2	3321101.868	701504.689
3	3321639.985	701174.795
4	3322118.775	700599.761
5	3322230.961	701181.825
6	3321961.024	701200.779
7	3321811.849	701292.296
8	3321770.968	701340.817
9	3321806.013	701399.342
10	3321042.882	701866.860

STATIONING DATA

STA. 0+00.00	AZ. 211°35'32.1
STA. 1+00.00	AZ. 211°35'32.7
STA. 2+00.00	AZ. 211°35'33.0
STA. 3+00.00	AZ. 211°35'33.5
STA. 4+00.00	AZ. 211°35'34.0
STA. 5+00.00	AZ. 211°35'34.5
STA. 6+00.00	AZ. 211°35'35.1
STA. 7+00.00	AZ. 211°35'35.6
STA. 8+00.00	AZ. 211°35'36.0
STA. 9+00.00	AZ. 211°35'36.6
STA. 10+00.00	AZ. 211°35'36.9
STA. 11+00.00	AZ. 211°35'37.2
STA. 12+00.00	AZ. 211°35'37.3
STA. 13+00.00	AZ. 211°35'37.5
STA. 14+00.00	AZ. 211°35'37.6
STA. 15+00.00	AZ. 211°35'37.7
STA. 16+00.00	AZ. 211°35'37.8
STA. 17+00.00	AZ. 211°35'37.9
STA. 18+00.00	AZ. 211°35'38.0
STA. 19+00.00	AZ. 211°35'38.1
STA. 20+00.00	AZ. 211°35'38.2



**DISCLAIMER**

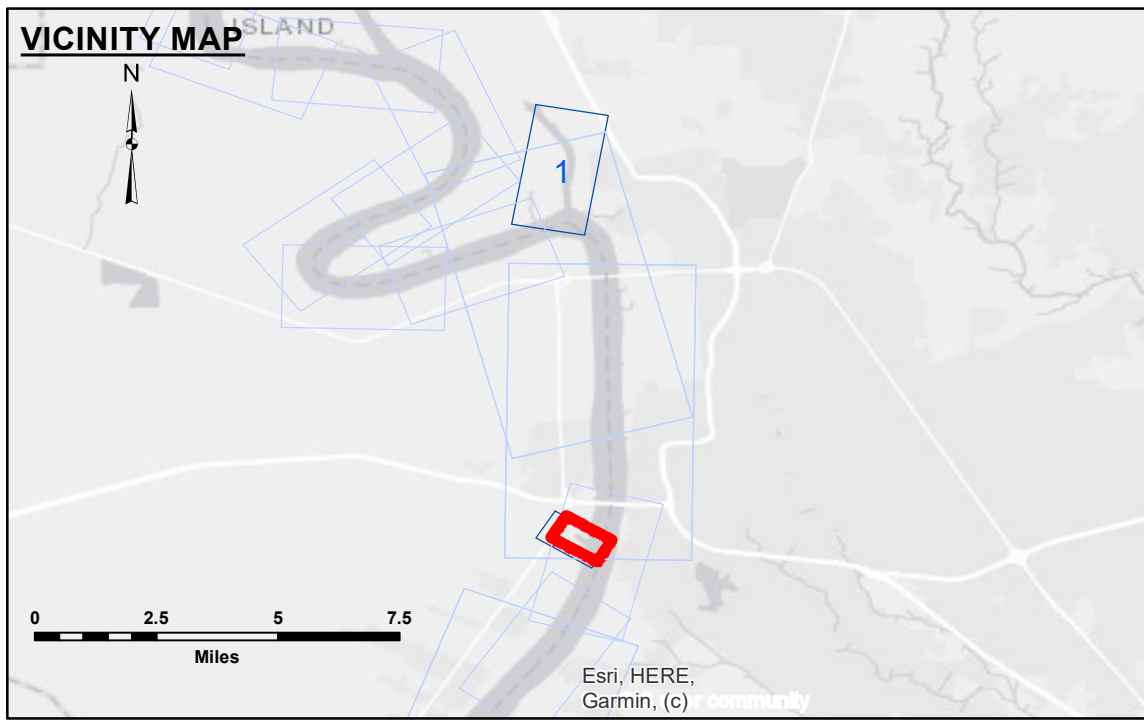
The information depicted on this map represents the results of a survey conducted by the United States Army Corps of Engineers. The user is responsible for the accuracy, completeness, and reliability of the information for the intended use. The user is advised to verify the information for their specific application. The Corps of Engineers does not warrant the accuracy, completeness, or reliability of the information for any purpose other than that for which it was prepared. The Corps of Engineers does not accept any responsibility for damages in any form or for any loss or injury, including consequential damages, resulting from the use or misuse of the information. The Corps of Engineers does not accept any responsibility for the accuracy, completeness, or reliability of the information for any purpose other than that for which it was prepared. The Corps of Engineers does not accept any responsibility for damages in any form or for any loss or injury, including consequential damages, resulting from the use or misuse of the information.

U.S. ARMY CORPS OF ENGINEERS  
NEW ORLEANS DISTRICT

Submitted:	Surveyed By: RYLAND/SIMMONS
Recommended:	Plotted By: BD
Approved:	Checked By: ADJH

**BATON ROUGE HARBOR  
PORT ALLEN LOCK FOREBAY  
LK\_04\_PAL\_20240722\_CS**

22 July 2024



**LEGEND**

--- Federal Navigation Channel	○ Cable Area	□ Borrow Area
— Federal Navigation Center Line	□ Placement Area	● Shoalest Sounding**
— As-built Pipeline/Cable	□ Anchorage Area	★ Beacon, General
..... Unconfirmed Pipeline/Cable	⊗ Obstruction Point	◆ Red Navigation Buoy
— Project Depth Contour	⚓ Wrecks-Submerged	◆ Green Navigation Buoy
		■ -8' and above
		■ -8' to -10'
		■ -10' to -12'
		■ -12' and below

Compass rose and scale bar (0 to 500 Feet).

Gage Reading: BR: 21.40 NGVD  
 Sea Conditions: CALM.  
 Vessel Name: OB-189  
 Survey Type: CS  
 Sounding Frequency\*\*\*: HIGH

**NOTES:**

Horizontal Coordinate System: North American Datum of 1983 (NAD83), projected to the State Plane Coordinate System (SPCS), Louisiana South Zone. Distance units in U.S. Survey Feet.

Vertical Datum: Soundings are shown in feet and indicate depths below National Geodetic Vertical Datum of 1929 (NGVD29).

Distances on the Mississippi River, above and below Head of Passes are shown at 1 mile intervals.

The location of navigation aids are based on and provided by the U.S. Coast Guard.

2015 Aerial Photography data source: NAIP

Reference is N.O.A.A. Navigation Chart No. 11370.

\*\*\* Shoalest Sounding per Quarter per Reach.

\*\*\* High frequency (200 kHz) survey data represents the first signal return at a sounding location and will include suspended solids, known as "fluff", if present. Low frequency (20 kHz) survey data normally penetrates through this "fluff" layer to depict elevations of consolidated bottom material. Low frequency accuracies may vary depending on channel conditions and fathometer settings.