

Accession: The data represents the results of data collection for a specific US Army Corps of Engineers project. The user is responsible for the results and accuracy of the data. The user is responsible for the results and accuracy of the data. The user is responsible for the results and accuracy of the data.

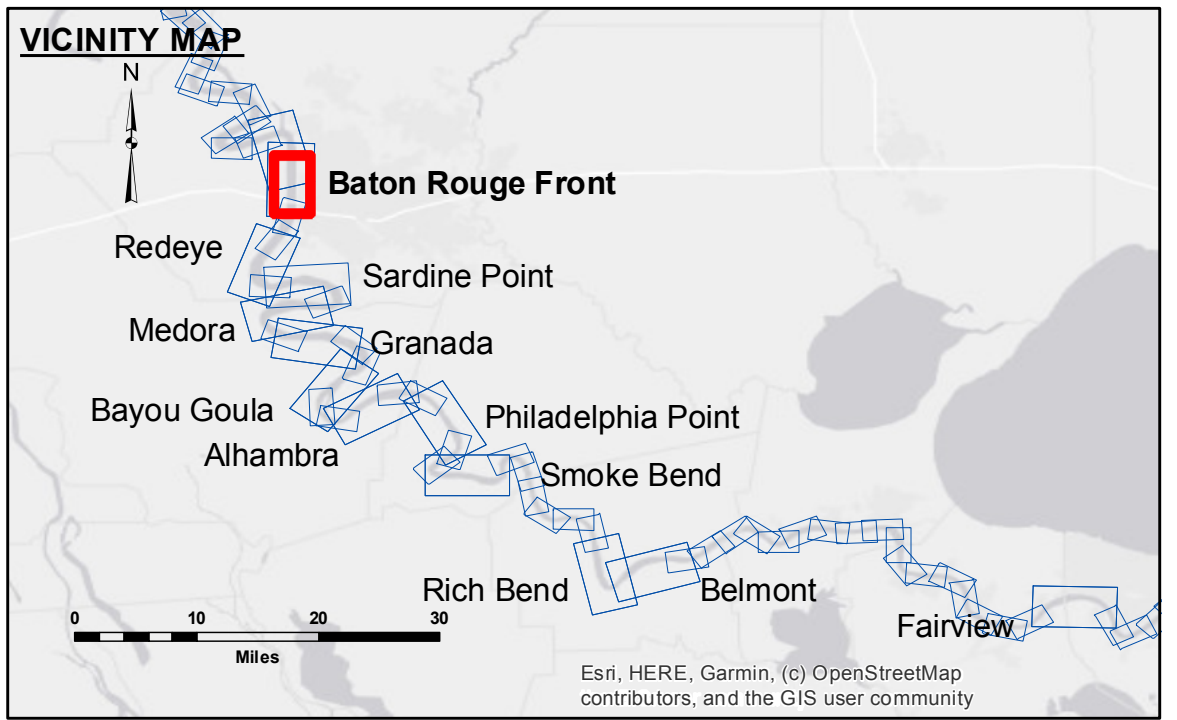
Distribution: The data is available for use by the US Army Corps of Engineers and its authorized personnel. The data is available for use by the US Army Corps of Engineers and its authorized personnel. The data is available for use by the US Army Corps of Engineers and its authorized personnel.

Submitted:	Checked:
Recommended:	Checked:
Approved:	Checked:

U.S. ARMY CORPS OF ENGINEERS
NEW ORLEANS DISTRICT

MISSISSIPPI RIVER - B.R. TO GULF
BATON ROUGE FRONT CROSSING
MD_01_BRFX_20211102_AD
02 November 2021

Sheet Reference Number
1 of 97



LEGEND

--- Federal Navigation Channel	○ Cable Area	□ Borrow Area	■ 0' and above
— Federal Navigation Center Line	□ Placement Area	● Shoalest Sounding**	■ 0' to -5'
— As-built Pipeline/Cable	□ Anchorage Area	☆ Beacon, General	■ -5' to -10'
..... Unconfirmed Pipeline/Cable	⊗ Obstruction Point	◆ Red Navigation Buoy	■ -10' to -20'
— Project Depth Contour	⚓ Wrecks-Submerged	◆ Green Navigation Buoy	■ -20' to -30'
			■ -30' to -35'
			■ -35' to -40'
			■ -40' to -45'
			■ -45' and below

NOTES:

Horizontal Coordinate System:
North American Datum of 1983 (NAD83), projected to the State Plane Coordinate System (SPCS), Louisiana South Zone. Distance units in U.S. Survey Feet.

Vertical Datum:
Soundings are shown in feet and indicate depths below Low Water Reference Plane 2007 (NAVD).
Distances on the Mississippi River, above and below Head of Passes are shown at 1 mile intervals.

The location of navigation aids are base on and provided by the U.S. Coast Guard and USACE crew.
2015 Aerial Photography data source: NAIP, USDA-FSA-APFO Aerial Photography Field Office.

Reference is N.O.A. Navigation Chart No. 11370.

** Shoalest Sounding per Quarter per Reach.

*** High frequency (200 kHz) survey data represents the first signal return at a sounding location and will include suspended solids, known as "fluff", if present. Low frequency (20 kHz) survey data normally penetrates through this "fluff" layer to depict elevations of consolidated bottom material. Low frequency accuracies may vary depending on channel conditions and fathometer settings.

LWRP: 2.6
Gage Reading: BR:8.2 D:3.9 USED:8.3 NAVD
Sea Conditions: CALM
Vessel Name: M/V LAFORCHE
Survey Type: CS
Sounding Frequency***: HIGH