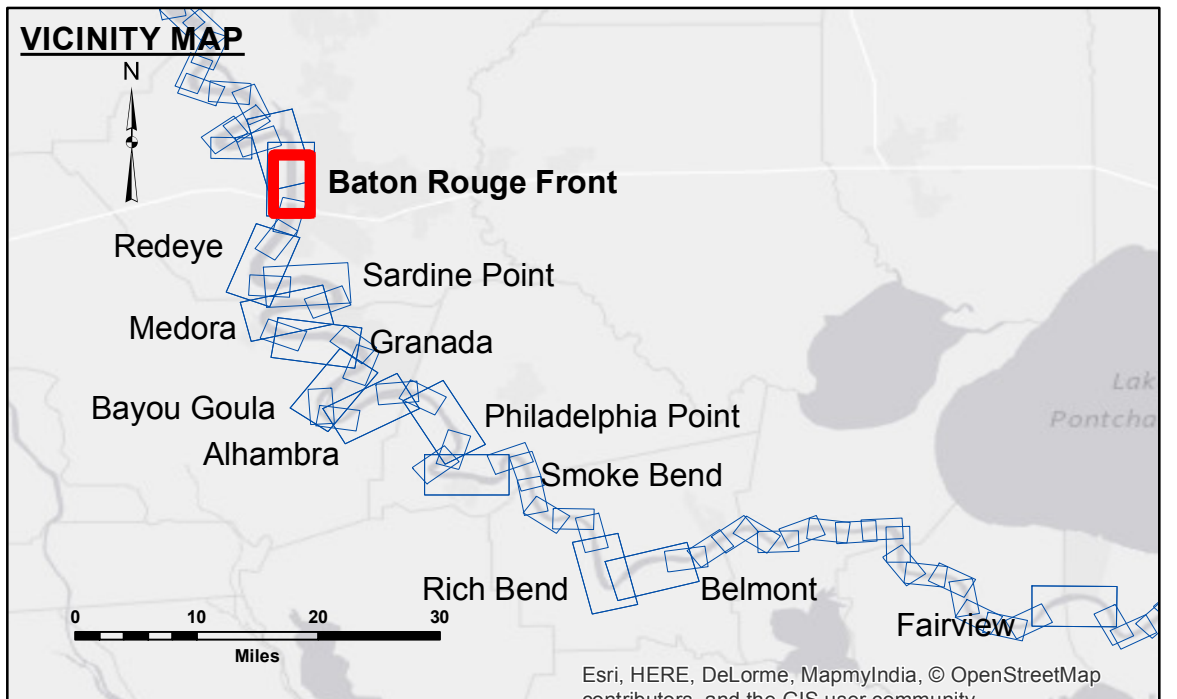


DISCLAIMER
 The information depicted on this map represents the results of a survey conducted by the U.S. Army Corps of Engineers. The user is responsible for the accuracy, completeness, and reliability of the data for its intended use. The user is not to be held liable for any damages or losses resulting from the use of this information. The information is provided for informational purposes only and is not to be used for any other purpose. The user is advised to consult the appropriate technical manual for the use of this information. The information is not to be used for any purpose other than that for which it was intended. The user is advised to consult the appropriate technical manual for the use of this information. The information is not to be used for any purpose other than that for which it was intended.

Submitted:	DR, JH
Recommended:	BTD
Approved:	MSK

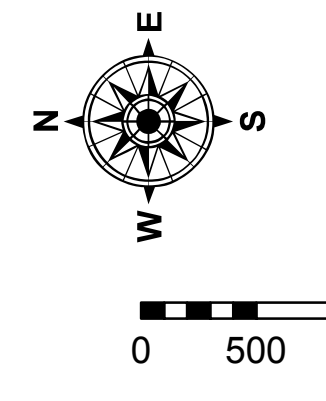
U.S. ARMY CORPS OF ENGINEERS
 NEW ORLEANS DISTRICT

MISSISSIPPI RIVER - B.R. TO GULF
BATON ROUGE FRONT CROSSING
 MD_01_BRF_20151210
 10 December 2015



LEGEND	
--- Federal Navigation Channel	○ Cable Area
— Federal Navigation Center Line	□ Placement Area
— As-built Pipeline/Cable	□ Anchorage Area
..... Unconfirmed Pipeline/Cable	⊗ Obstruction Point
— Project Depth Contour	✶ Wrecks-Submerged
□ Borrow Area	★ Beacon, General
● Shoalest Sounding**	◆ Red Navigation Buoy
☆ Beacon, General	◆ Green Navigation Buoy

0' and above	0' to -5'
-5' to -10'	-10' to -20'
-20' to -30'	-30' to -35'
-35' to -40'	-40' to -45'
-45' and below	



LWRP: 2.8
 Gage Reading: RR:45.90 BR:29.81 USED:30.10 NGVD
 Sea Conditions: CALM
 Vessel Name: M/V OB 189
 Survey Type: CONDITION
 Sounding Frequency***: HIGH

NOTES:
 Horizontal Coordinate System:
 North American Datum of 1983 (NAD83), projected to the State Plane
 Coordinate System (SPCS), Louisiana South Zone. Distance units in U.S. Survey Feet.
 Vertical Datum:
 Soundings are shown in feet and indicate depths below Low Water Reference Plane 2007 (NGVD).
 Distances on the Mississippi River, above and below Head of Passes are shown
 at 1 mile intervals.
 The location of navigation aids are base on and provided by the U.S. Coast Guard and USACE crew.
 2010 Aerial Photography data source: NAIP, USDA-FSA-APFO Aerial Photography Field Office.
 Reference is N.O.A. Navigation Chart No. 11370.
 ** Shoalest Sounding per Quarter per Reach.
 *** High frequency (200 kHz) survey data represents the first signal return at a sounding
 location and will include suspended solids, known as "fluff", if present. Low frequency (20 kHz)
 survey data normally penetrates through this "fluff" layer to depict elevations of consolidated bottom
 material. Low frequency accuracies may vary depending on channel conditions and fathometer
 settings.

Sheet Reference Number
 1 of 97

Revision Number:
 3.8.2015012