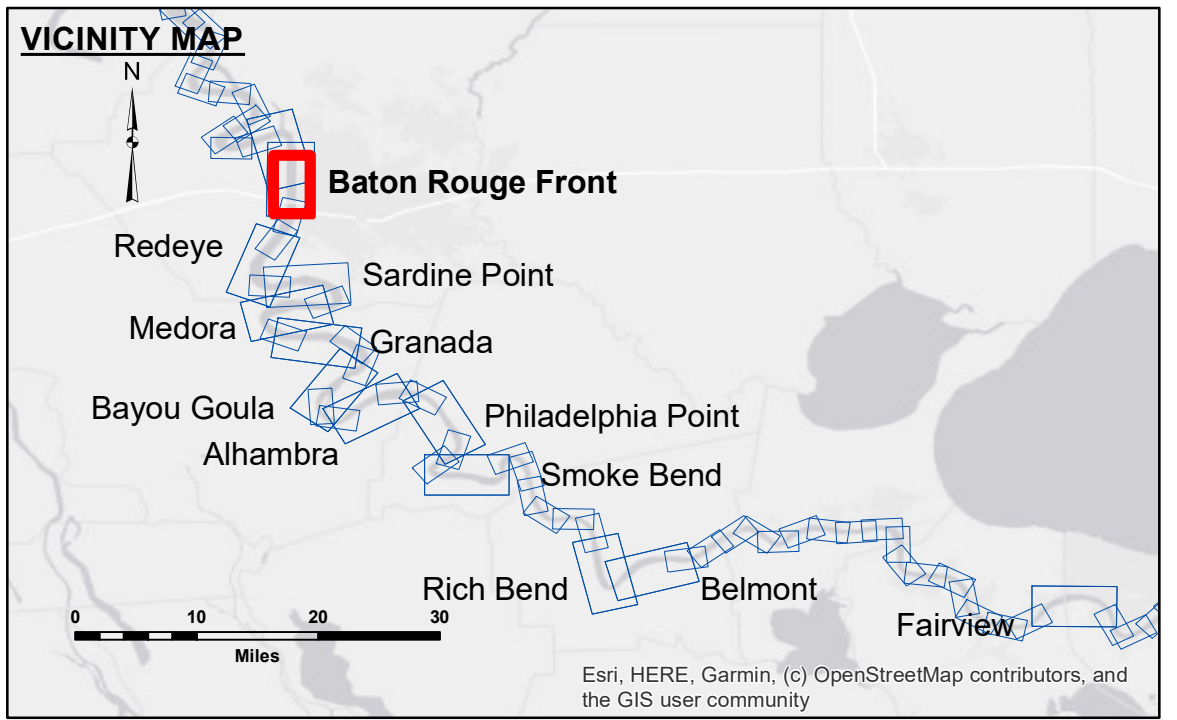


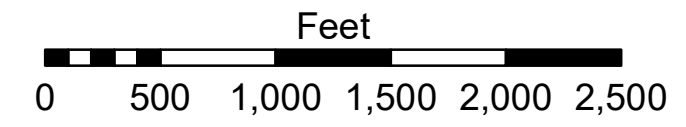
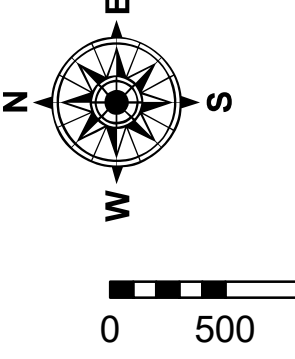
**DISCLAIMER**  
 The United States Government furnishes these data and the recipient accepts and uses them with the express understanding that the data are not to be used for any purpose other than that for which they were prepared, and that the Government makes no warranty, expressed or implied, concerning the accuracy, completeness, reliability, usability or suitability for any particular purpose of the data. The user is responsible for the results of the application of the data for other than its intended purpose.  
 Data Constants: Hydrographic survey data is subject to change rapidly due to several factors including but not limited to changing bathymetry, sedimentation, and channel conditions. The user is responsible for the results of the application of the data for other than its intended purpose.  
 The information depicted on this map represents the results of a survey conducted by the United States Army Corps of Engineers. It is not to be used for any purpose other than that for which it was prepared. The user is responsible for the results of the application of the data for other than its intended purpose.

Submitted:	Roommate:	Checked By:
Surveyed By:	Plotted By:	Checked By:
DJ/S/SPS	BD	AC

U.S. ARMY CORPS OF ENGINEERS  
 NEW ORLEANS DISTRICT



LEGEND		0' and above	
--- Federal Navigation Channel	○ Cable Area	■ 0' to -5'	■ 0' and above
— Federal Navigation Center Line	□ Placement Area	■ -5' to -10'	■ -5' to -10'
— As-built Pipeline/Cable	□ Anchorage Area	■ -10' to -20'	■ -10' to -20'
..... Unconfirmed Pipeline/Cable	⊗ Obstruction Point	■ -20' to -30'	■ -20' to -30'
— Project Depth Contour	★ Beacon, General	■ -30' to -35'	■ -30' to -35'
	◆ Wrecks-Submerged	■ -35' to -40'	■ -35' to -40'
		■ -40' to -45'	■ -40' to -45'
		■ -45' and below	■ -45' and below
			■ Borrow Area
			● Shoalest Sounding**
			★ Red Navigation Buoy
			◆ Green Navigation Buoy



LWRP: 2.6  
 Gage Reading: BR:20.6 D:12.3 USED:20.9 NAVD  
 Sea Conditions: CALM  
 Vessel Name: M/V LAFOURCHE  
 Survey Type: CONDITION  
 Sounding Frequency\*\*\*: HIGH

**NOTES:**  
 Horizontal Coordinate System:  
 North American Datum of 1983 (NAD83), projected to the State Plane Coordinate System (SPCS), Louisiana South Zone. Distance units in U.S. Survey Feet.  
 Vertical Datum:  
 Soundings are shown in feet and indicate depths below Low Water Reference Plane 2007 (NAVD).  
 Distances on the Mississippi River, above and below Head of Passes are shown at 1 mile intervals.  
 The location of navigation aids are base on and provided by the U.S. Coast Guard and USACE crew.  
 2015 Aerial Photography data source: NAIP, USDA-FSA-APFO Aerial Photography Field Office.  
 Reference is N.O.A. Navigation Chart No. 11370.  
 \*\* Shoalest Sounding per Quarter per Reach.  
 \*\*\* High frequency (200 kHz) survey data represents the first signal return at a sounding location and will include suspended solids, known as "fluff", if present. Low frequency (20 kHz) survey data normally penetrates through this "fluff" layer to depict elevations of consolidated bottom material. Low frequency accuracies may vary depending on channel conditions and fathometer settings.

**MISSISSIPPI RIVER - B.R. TO GULF  
 BATON ROUGE FRONT CROSSING  
 MD\_01\_BRF\_20190821\_CS  
 21 August 2019**

**Sheet Reference Number  
 1 of 97**

Revision Number:  
 4-19-2019/0102