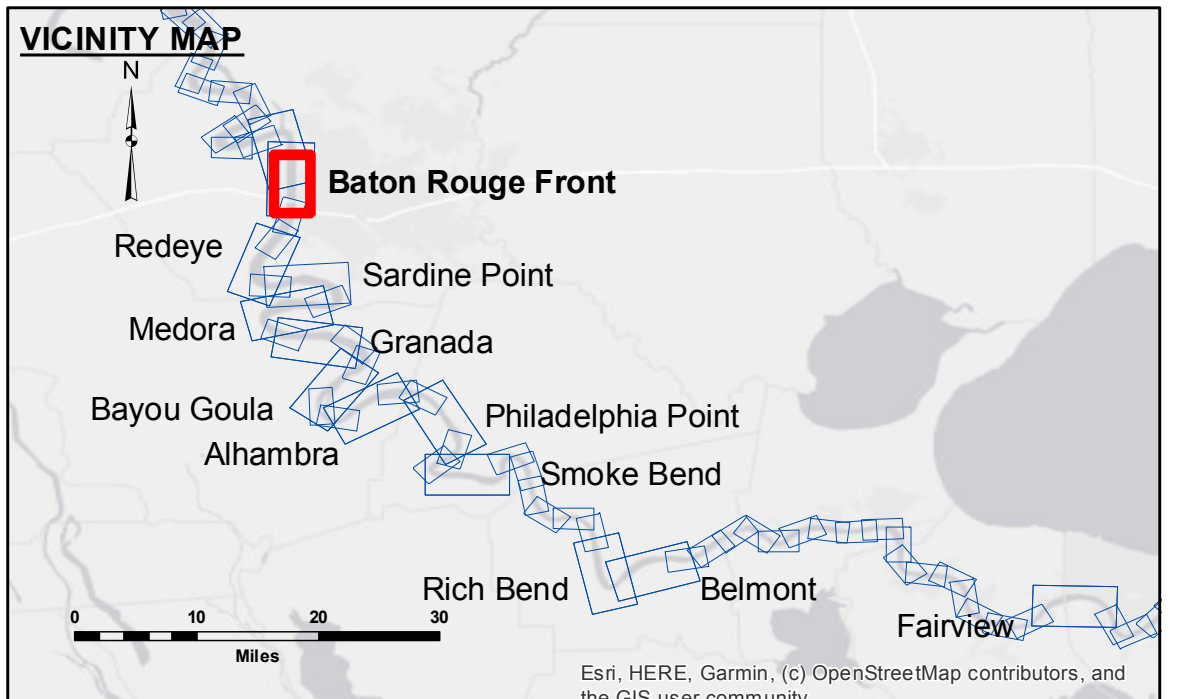


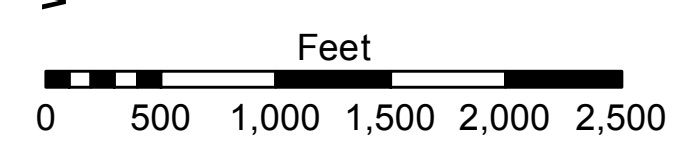
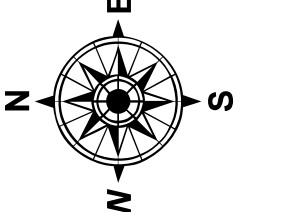
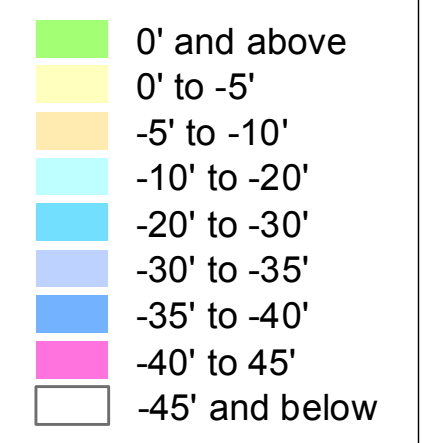
Access/Use: The United States Government furnishes these data and the recipient accepts and uses them with the express understanding that they are for informational purposes only. The user is responsible for the accuracy, completeness, reliability, usability or suitability for any particular purpose of the information. The user shall be held responsible for any use under no liability whatsoever to any person by reason of any use made thereof. These data belong to the Government. Therefore the Government provides data. The recipient may not transfer these data to others without obtaining the permission of the Army Corps of Engineers. The Army Corps of Engineers is not responsible for changes in the geographical conditions when developed after the date of the information depicted on this map represents the results of a survey. The information depicted on this map represents the results of a survey. The information depicted on this map represents the results of a survey. The information depicted on this map represents the results of a survey.

Submitted:	Surveyed By:
Recommended:	RYLAND/RHODEN
Approved:	Printed By:
	BD
	Checked By:
	AC

MISSISSIPPI RIVER - B.R. TO GULF
BATON ROUGE FRONT CROSSING
MD_01_BRF_20210113_CS
13 January 2021



LEGEND	
--- Federal Navigation Channel	● Cable Area
— Federal Navigation Center Line	■ Placement Area
— As-built Pipeline/Cable	□ Anchorage Area
..... Unconfirmed Pipeline/Cable	⊗ Obstruction Point
— Project Depth Contour	★ Wrecks-Submerged
□ Borrow Area	★ Beacon, General
● Shoalest Sounding**	◆ Red Navigation Buoy
◆ Green Navigation Buoy	



LWRP: 2.6
 BR:27.6 D:18.4 USED:28.0 NAVD
 Gage Reading:
 Sea Conditions: CHOPPY
 Vessel Name: OB-189
 Survey Type: CS
 Sounding Frequency***: HIGH

NOTES:
 Horizontal Coordinate System:
 North American Datum of 1983 (NAD83), projected to the State Plane Coordinate System (SPCS), Louisiana South Zone. Distance units in U.S. Survey Feet.
 Vertical Datum:
 Soundings are shown in feet and indicate depths below Low Water Reference Plane 2007 (NAVD).
 Distances on the Mississippi River, above and below Head of Passes are shown at 1 mile intervals.
 The location of navigation aids are base on and provided by the U.S. Coast Guard and USACE crew.
 2015 Aerial Photography data source: NAIP, USDA-FSA-APFO Aerial Photography Field Office.
 Reference is N.O.A. Navigation Chart No. 11370.
 ** Shoalest Sounding per Quarter per Reach.
 *** High frequency (200 kHz) survey data represents the first signal return at a sounding location and will include suspended solids, known as "fluff", if present. Low frequency (20 kHz) survey data normally penetrates through this "fluff" layer to depict elevations of consolidated bottom material. Low frequency accuracies may vary depending on channel conditions and fathometer settings.

Sheet Reference Number
1 of 97