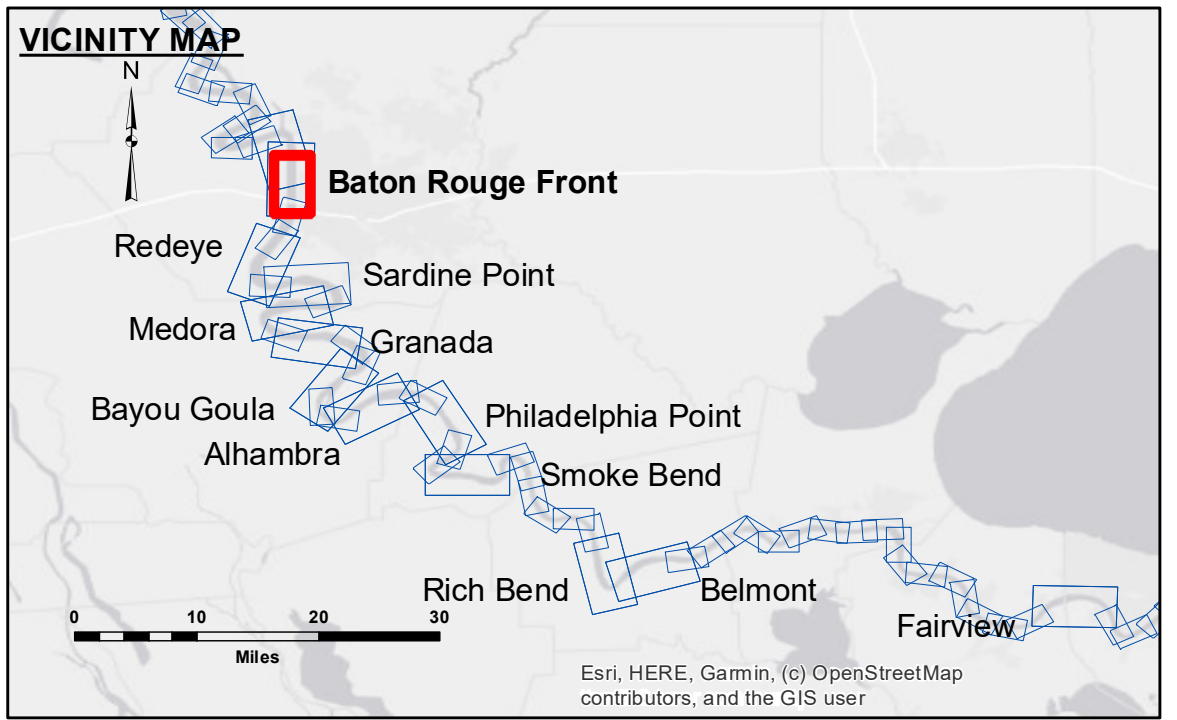


DISCLAIMER: The United States Government furnishes these data and the recipient accepts and uses them with the express understanding that they are for informational purposes only. The user is responsible for the accuracy, completeness, reliability, usability or suitability for any particular purpose of the information provided. The user shall not be held liable for any damage or liability, whatsoever, to any person by reason of any use of the information provided. These data belong to the Government. Therefore the recipient may not transfer, disseminate, or use these data to others without the express written consent of the Government. The information depicted on this map represents the results of a survey conducted on the ground and is not to be used for any purpose other than that for which it was collected. The user is responsible for the accuracy, completeness, reliability, usability or suitability for any particular purpose of the information provided. The user shall not be held liable for any damage or liability, whatsoever, to any person by reason of any use of the information provided. These data belong to the Government. Therefore the recipient may not transfer, disseminate, or use these data to others without the express written consent of the Government.

U.S. ARMY CORPS OF ENGINEERS NEW ORLEANS DISTRICT		
Submitted:	Surveyed By: D/S/SPS	Plotted By: BD
Recommended:	Chief, Survey Section	Checked By: AC
Approved:	Chief, Waterways Maintenance Section	

**MISSISSIPPI RIVER - B.R. TO GULF
BATON ROUGE FRONT CROSSING**
MD_01_BRF_20210315_CS
15 March 2021



LEGEND			
--- Federal Navigation Channel	○ Cable Area	□ Borrow Area	0' and above
— Federal Navigation Center Line	▭ Placement Area	● Shoalest Sounding**	-5' to -5'
— As-built Pipeline/Cable	□ Anchorage Area	☆ Beacon, General	-5' to -10'
..... Unconfirmed Pipeline/Cable	⊗ Obstruction Point	◆ Red Navigation Buoy	-10' to -20'
— Project Depth Contour	✶ Wrecks-Submerged	◆ Green Navigation Buoy	-20' to -30'
			-30' to -35'
			-35' to -40'
			-40' to -45'
			-45' and below

LWRP: 2.6
 Gage Reading: RR:48.8D:21.9 USED:32.2 NAVD
 Sea Conditions: CALM
 Vessel Name: OB-189
 Survey Type: CS
 Sounding Frequency***: HIGH

NOTES:
 Horizontal Coordinate System:
 North American Datum of 1983 (NAD83), projected to the State Plane
 Coordinate System (SPCS), Louisiana South Zone. Distance units in U.S. Survey Feet.
 Vertical Datum:
 Soundings are shown in feet and indicate depths below Low Water Reference Plane 2007 (NAVD).
 Distances on the Mississippi River, above and below Head of Passes are shown
 at 1 mile intervals.
 The location of navigation aids are base on and provided by the U.S. Coast Guard and USACE crew.
 2015 Aerial Photography data source: NAIP, USDA-FSA-APFO Aerial Photography Field Office.
 Reference is N.O.A. Navigation Chart No. 11370.
 ** Shoalest Sounding per Quarter per Reach.
 *** High frequency (200 kHz) survey data represents the first signal return at a sounding
 location and will include suspended solids, known as "fluff", if present. Low frequency (20 kHz)
 survey data normally penetrates through this "fluff" layer to depict elevations of consolidated bottom
 material. Low frequency accuracies may vary depending on channel conditions and bathymeter
 settings.

**Sheet
Reference
Number**
1 of 97