

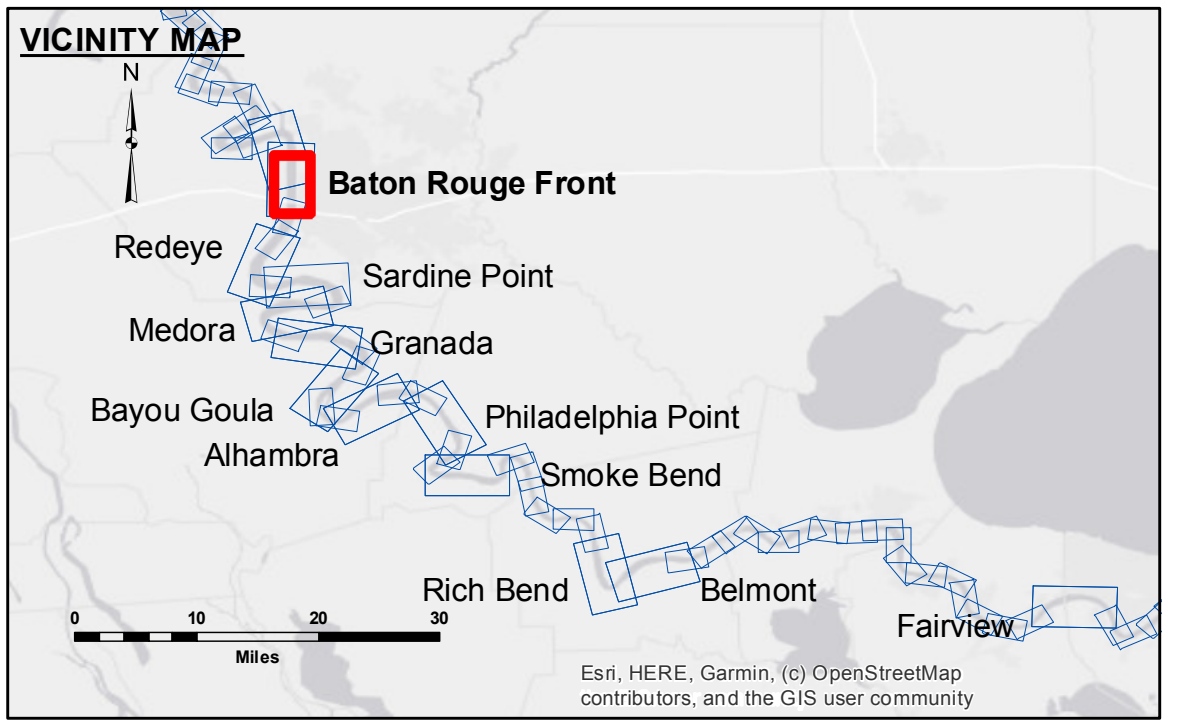


Accession: 3,328,000
Accession Date: 08 February 2022
Accession Number: MD_01_BRF_20220208_CS
Accession Title: MISSISSIPPI RIVER - B.R. TO GULF BATON ROUGE FRONT CROSSING

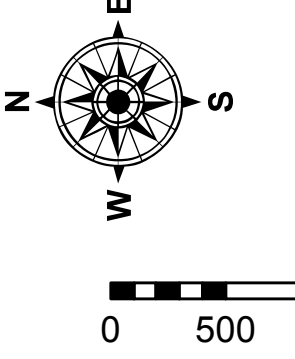
Accession Description: This map represents the results of data collection for a specific US Army Corps of Engineers project. It is intended for use in the design and construction of a project. The user is responsible for the results of the project. The user should verify the accuracy of the data for their own use. The user should also verify the accuracy of the data for their own use. The user should also verify the accuracy of the data for their own use.

U.S. ARMY CORPS OF ENGINEERS NEW ORLEANS DISTRICT		
Submitted:	Surveyed By:	Ryland Adams
Recommended:	Plotted By:	JH
Approved:	Checked By:	JH

**MISSISSIPPI RIVER - B.R. TO GULF
 BATON ROUGE FRONT CROSSING
 MD_01_BRF_20220208_CS
 08 February 2022**



LEGEND			
--- Federal Navigation Channel	○ Cable Area	□ Borrow Area	■ 0' and above
— Federal Navigation Center Line	□ Placement Area	● Shoalest Sounding**	■ 0' to -5'
— As-built Pipeline/Cable	□ Anchorage Area	★ Beacon, General	■ -5' to -10'
..... Unconfirmed Pipeline/Cable	⊗ Obstruction Point	◆ Red Navigation Buoy	■ -10' to -20'
— Project Depth Contour	✶ Wrecks-Submerged	◆ Green Navigation Buoy	■ -20' to -30'
			■ -30' to -35'
			■ -35' to -40'
			■ -40' to -45'
			■ -45' and below



LWRP: 2.6
Gage Reading: BR:14.6 D:8.8 USED: 14.80 NAVD
Sea Conditions: CALM
Vessel Name: M/V OB 189
Survey Type: CONDITION
Sounding Frequency*:** HIGH

Notes:
 Horizontal Coordinate System:
 North American Datum of 1983 (NAD83), projected to the State Plane Coordinate System (SPCS), Louisiana South Zone. Distance units in U.S. Survey Feet.
 Vertical Datum:
 Soundings are shown in feet and indicate depths below Low Water Reference Plane 2007 (NAVD).
 Distances on the Mississippi River, above and below Head of Passes are shown at 1 mile intervals.
 The location of navigation aids are base on and provided by the U.S. Coast Guard and USACE crew.
 2015 Aerial Photography data source: NAIP, USDA-FSA-APFO Aerial Photography Field Office.
 Reference is N.O.A. Navigation Chart No. 11370.
 ** Shoalest Sounding per Quarter per Reach.
 *** High frequency (200 kHz) survey data represents the first signal return at a sounding location and will include suspended solids, known as "fluff", if present. Low frequency (20 kHz) survey data normally penetrates through this "fluff" layer to depict elevations of consolidated bottom material. Low frequency accuracies may vary depending on channel conditions and fathometer settings.

Sheet Reference Number
 1 of 97

Revision Number:
 4.2-20220820