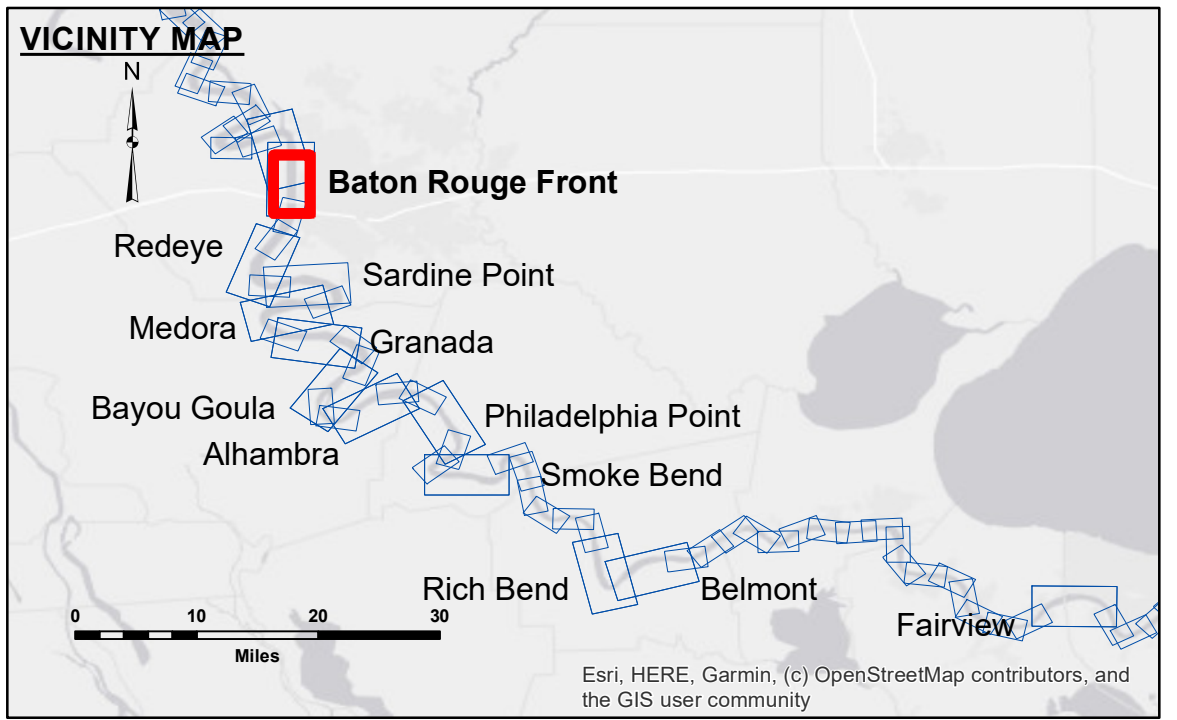


**DISCLAIMER**  
 The information depicted on this map represents the results of a survey conducted by the U.S. Army Corps of Engineers. The data is subject to change without notice. The user is responsible for the accuracy, reliability, usability, or suitability for any particular purpose of the information. The user is responsible for the results of the application of the information for other than its intended purpose. Data Constants Hydrographic survey data is subject to change due to several factors including but not limited to changing bathymetry, sedimentation, and other factors. The user is responsible for the accuracy, reliability, usability, or suitability for any particular purpose of the information. The user is responsible for the results of the application of the information for other than its intended purpose. The information depicted on this map represents the results of a survey conducted by the U.S. Army Corps of Engineers. The data is subject to change without notice. The user is responsible for the accuracy, reliability, usability, or suitability for any particular purpose of the information. The user is responsible for the results of the application of the information for other than its intended purpose.

Surveyed By:	RYLAND/MOLLERE
Plotted By:	JH
Checked By:	JH
Recommended:	Chief, Survey Section
Approved:	Chief, Waterways Maintenance Section

**MISSISSIPPI RIVER - B.R. TO GULF**  
**BATON ROUGE FRONT CROSSING**  
 MD\_01\_BRF\_20220607\_CS  
 07 June 2022



**LEGEND**

--- Federal Navigation Channel	○ Cable Area	□ Borrow Area	■ 0' and above
— Federal Navigation Center Line	□ Placement Area	● Shoalest Sounding**	■ 0' to -5'
— As-built Pipeline/Cable	□ Anchorage Area	★ Beacon, General	■ -5' to -10'
..... Unconfirmed Pipeline/Cable	⊗ Obstruction Point	◆ Red Navigation Buoy	■ -10' to -20'
— Project Depth Contour	✈ Wrecks-Submerged	◆ Green Navigation Buoy	■ -20' to -30'
			■ -30' to -35'
			■ -35' to -40'
			■ -40' to -45'
			■ -45' and below

**NOTES:**

Horizontal Coordinate System:  
 North American Datum of 1983 (NAD83), projected to the State Plane Coordinate System (SPCS), Louisiana South Zone. Distance units in U.S. Survey Feet.

Vertical Datum:  
 Soundings are shown in feet and indicate depths below Low Water Reference Plane 2007 (NAVD).

Distances on the Mississippi River, above and below Head of Passes are shown at 1 mile intervals.

The location of navigation aids are based on and provided by the U.S. Coast Guard and USACE crew.

2015 Aerial Photography data source: NAIP, USDA-FSA-APFO Aerial Photography Field Office.

Reference is N.O.A. Navigation Chart No. 11370.

\*\* Shoalest Sounding per Quarter per Reach.

\*\*\* High frequency (200 kHz) survey data represents the first signal return at a sounding location and will include suspended solids, known as "fluff", if present. Low frequency (20 kHz) survey data normally penetrates through this "fluff" layer to depict elevations of consolidated bottom material. Low frequency accuracies may vary depending on channel conditions and bathymeter settings.

LWRP: 2.6  
 BR:27.8 D:18.4 USED: 28.20 NAVD  
 Gage Reading:  
 Sea Conditions: CALM  
 Vessel Name: M/V OB 167  
 Survey Type: CONDITION  
 Sounding Frequency\*\*\*: HIGH

0 500 1,000 1,500 2,000 2,500 Feet