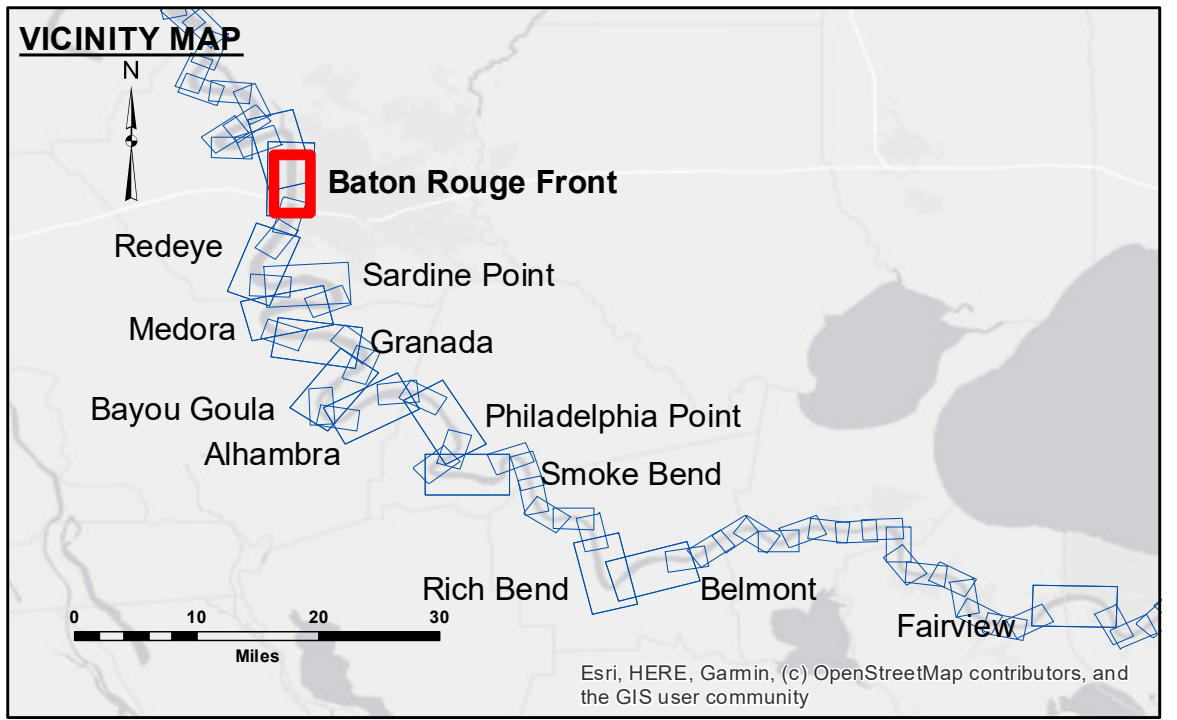


**DISCLAIMER:** The United States Government furnishes these data and the recipient accepts and uses them with the express understanding that the Government makes no warranty, expressed or implied, concerning the accuracy, completeness, reliability, or suitability for any particular purpose of the information. The user is responsible for the results of the application of the data for other than its intended purpose. Data furnished by the Government are subject to change without notice and are not to be used for purposes other than those for which they were furnished. The recipient may not transfer these data to others without the written permission of the U.S. Army Corps of Engineers. The information depicted on this map represents the results of a survey conducted on the ground and is not to be considered as a representation of the general condition existing at that time.

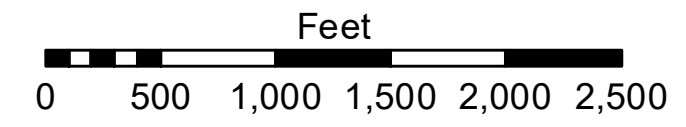
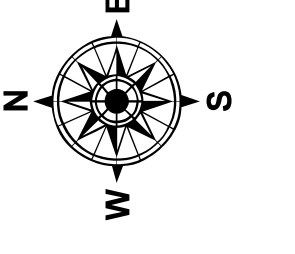
Submitted:	Surveyed By:	RYLAND/SIMMONS
Recommended:	Plotted By:	BD
Approved:	Checked By:	ADJH

U.S. ARMY CORPS OF ENGINEERS  
NEW ORLEANS DISTRICT

**MISSISSIPPI RIVER - B.R. TO GULF  
BATON ROUGE FRONT CROSSING  
MD\_01\_BRF\_20230103\_CS  
03 January 2023**



LEGEND		0' and above	
--- Federal Navigation Channel	○ Cable Area	■ 0' to -5'	LWRP: 2.6 BR:13.3 D:7.6 USED:13.50 NAVD Sea Conditions: CALM Vessel Name: M/V LAFOURCHE Survey Type: CS Sounding Frequency***: HIGH
— Federal Navigation Center Line	□ Placement Area	■ -5' to -10'	
— As-built Pipeline/Cable	□ Anchorage Area	■ -10' to -20'	
..... Unconfirmed Pipeline/Cable	✕ Obstruction Point	■ -20' to -30'	
— Project Depth Contour	★ Beacon, General	■ -30' to -35'	
	◆ Red Navigation Buoy	■ -35' to -40'	
	◆ Wrecks-Submerged	■ -40' to 45'	
	◆ Green Navigation Buoy	■ -45' and below	
	□ Borrow Area		
	● Shoalest Sounding**		



**NOTES:**

Horizontal Coordinate System:  
North American Datum of 1983 (NAD83), projected to the State Plane Coordinate System (SPCS), Louisiana South Zone. Distance units in U.S. Survey Feet.

Vertical Datum:  
Soundings are shown in feet and indicate depths below Low Water Reference Plane 2007 (NAVD).

Distances on the Mississippi River, above and below Head of Passes are shown at 1 mile intervals.

The location of navigation aids are based on and provided by the U.S. Coast Guard and USACE crew.

2015 Aerial Photography data source: NAIP, USDA-FSA-APFO Aerial Photography Field Office.

Reference is N.O.A.A. Navigation Chart No. 11370.

\*\*\* Shoalest Sounding per Quarter per Reach.

\*\*\* High frequency (200 kHz) survey data represents the first signal return at a sounding location and will include suspended solids, known as "fluff", if present. Low frequency (20 kHz) survey data normally penetrates through this "fluff" layer to depict elevations of consolidated bottom material. Low frequency accuracies may vary depending on channel conditions and bathymeter settings.

**Sheet Reference Number  
1 of 97**