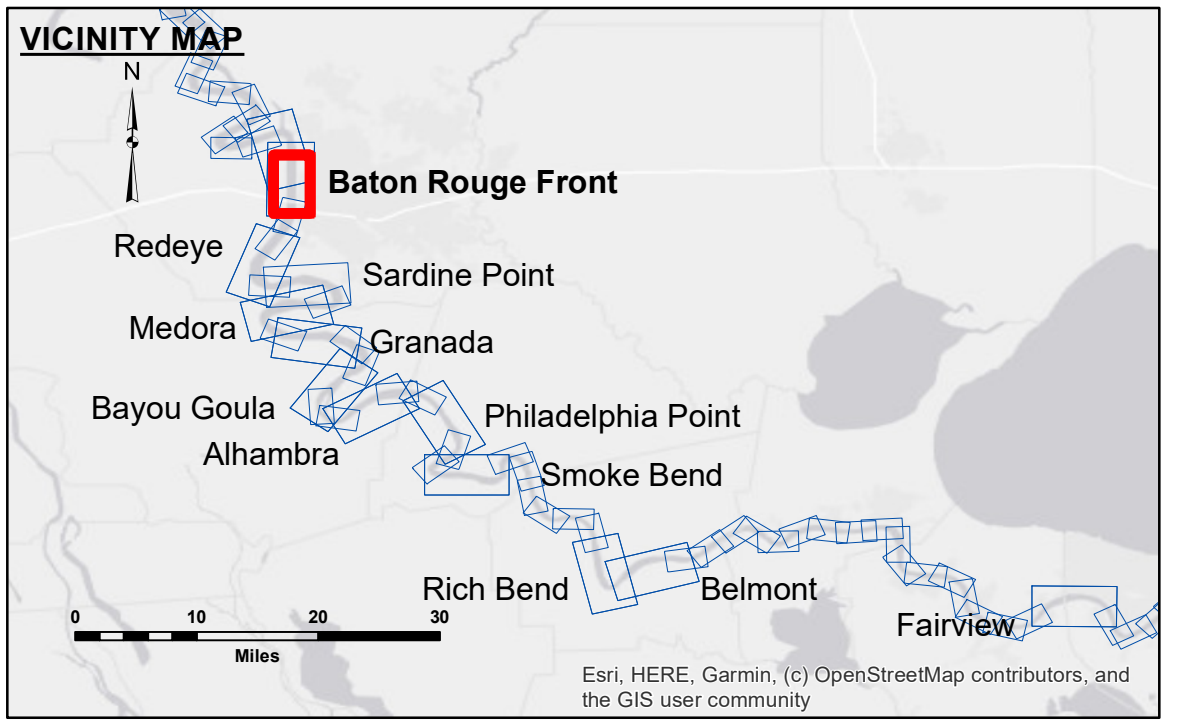


Distribution Liability: The data represents the results of data collection for a specific US Army Corps of Engineers project. It is only valid for its intended use, content, time and accuracy specifications. The user is responsible for the results of the application of the data for other than its intended purpose.

Data Constraints: Hydrographic survey data is subject to change rapidly due to several factors including, but not limited to, changing bathymetry, sedimentation, and other factors. The user is responsible for the data and should not rely on it for navigation purposes. The information depicted on the map represents the results of a survey and should not be used for navigation purposes. The user is responsible for the results of the application of the data for other than its intended purpose.

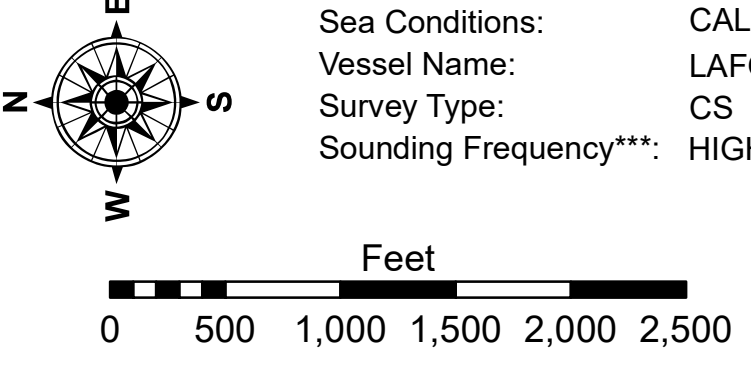
Surveyed By: RYLAND/SIMMONS	Plotted By: JH	Checked By: JH
Submitted:	Chief, Survey Section	Chief, Waterways Maintenance Section

MISSISSIPPI RIVER - B.R. TO GULF
BATON ROUGE FRONT CROSSING
MD_01_BRF_20230921_CS
21 September 2023



LEGEND	
--- Federal Navigation Channel	● Cable Area
— Federal Navigation Center Line	■ Placement Area
— As-built Pipeline/Cable	□ Anchorage Area
..... Unconfirmed Pipeline/Cable	⊗ Obstruction Point
— Project Depth Contour	★ Wrecks-Submerged
□ Borrow Area	★ Beacon, General
● Shoalest Sounding**	◆ Red Navigation Buoy
◆ Green Navigation Buoy	

LWRP:	2.6
Gage Reading:	BR:4.4 D:2.9 USED: 4.50 NAVD
Sea Conditions:	CALM
Vessel Name:	LAFOURCHE
Survey Type:	CS
Sounding Frequency***:	HIGH



NOTES:

Horizontal Coordinate System:
 North American Datum of 1983 (NAD83), projected to the State Plane Coordinate System (SPCS), Louisiana South Zone. Distance units in U.S. Survey Feet.

Vertical Datum:
 Soundings are shown in feet and indicate depths below Low Water Reference Plane 2007 (NAVD).

Distances on the Mississippi River, above and below Head of Passes are shown at 1 mile intervals.

The location of navigation aids are based on and provided by the U.S. Coast Guard and USACE crew.

2015 Aerial Photography data source: NAIP, USDA-FSA-APFO Aerial Photography Field Office.

Reference is N.O.A. Navigation Chart No. 11370.

** Shoalest Sounding per Quarter per Reach.

*** High frequency (200 kHz) survey data represents the first signal return at a sounding location and will include suspended solids, known as "fluff", if present. Low frequency (20 kHz) survey data normally penetrates through this "fluff" layer to depict elevations of consolidated bottom material. Low frequency accuracies may vary depending on channel conditions and bathymeter settings.

Sheet Reference Number
1 of 97

Revision Number:
 4-2-2024(4/2)