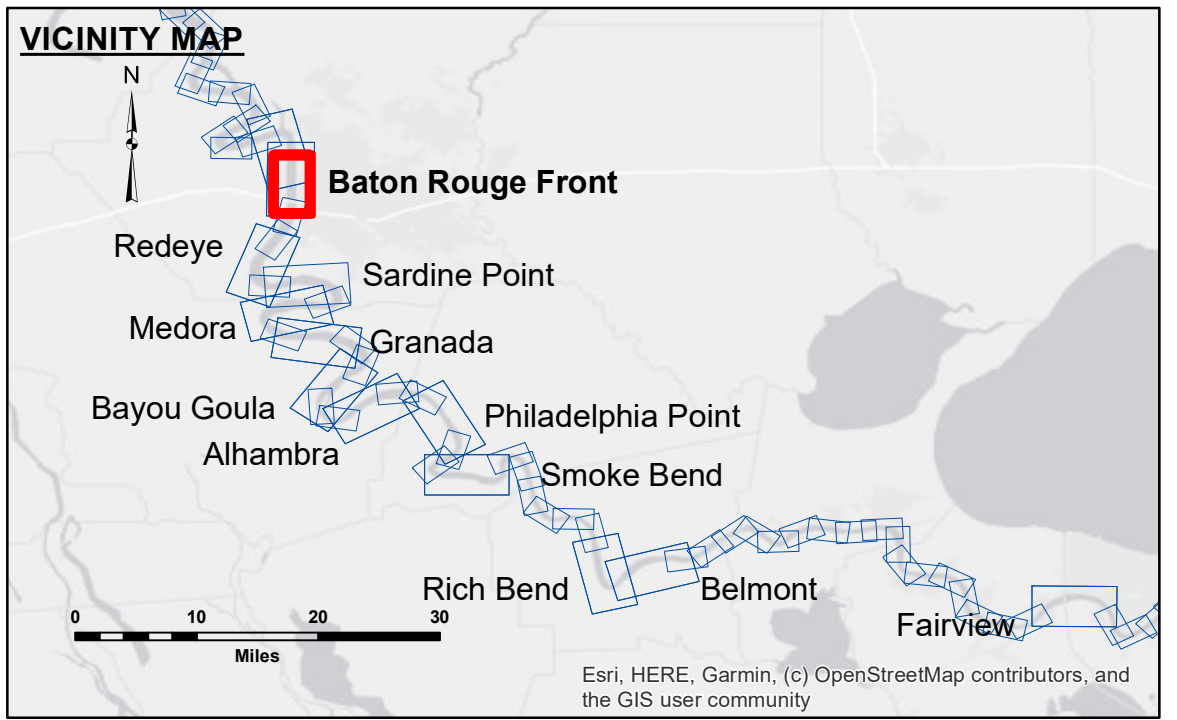


Distribution Liability: The data represents the results of data collection for a specific US Army Corps of Engineers project. It is only valid for its intended use, content, time and accuracy specifications. The user is responsible for the results of their use. The application of the data for other than its intended purpose is at the user's risk. The user should not rely on the data for any purpose other than that for which it was collected. Data Constants: Hydrographic survey data is subject to change due to several factors including but not limited to changing hydrographic conditions which develop after the date of the survey. The user should not rely on the data for any purpose other than that for which it was collected. The information depicted on the map represents the results of a survey and should not be used for any purpose other than that for which it was collected. The user should not rely on the data for any purpose other than that for which it was collected.

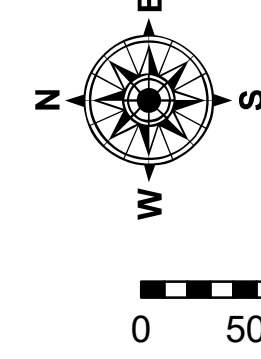
Surveyed By:	RYLAND/SIMMONS
Plotted By:	JH
Checked By:	JH
Submitted:	
Room/Desk:	Chief Survey Section
Approved:	Chief Waterways Maintenance Section

**MISSISSIPPI RIVER - B.R. TO GULF
BATON ROUGE FRONT CROSSING
MD_01_BRF_20231101_CS
01 November 2023**

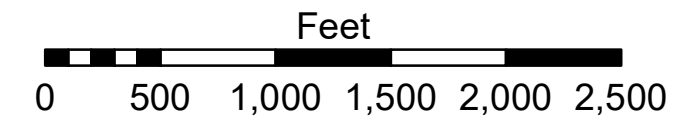


LEGEND	
--- Federal Navigation Channel	● Cable Area
— Federal Navigation Center Line	■ Placement Area
— As-built Pipeline/Cable	□ Anchorage Area
..... Unconfirmed Pipeline/Cable	⊗ Obstruction Point
— Project Depth Contour	✈ Wrecks-Submerged
□ Borrow Area	★ Beacon, General
● Shoalest Sounding**	◆ Red Navigation Buoy
★ Beacon, General	◆ Green Navigation Buoy

0' and above	0' to -5'	-5' to -10'	-10' to -20'	-20' to -30'	-30' to -35'	-35' to -40'	-40' to 45'	-45' and below
--------------	-----------	-------------	--------------	--------------	--------------	--------------	-------------	----------------



LWRP: 2.6
 Gage Reading: BR VRS RTK: 4.30 NAVD
 Sea Conditions: CALM
 Vessel Name: LAFOURCHE
 Survey Type: CS
 Sounding Frequency***: HIGH



NOTES:
 Horizontal Coordinate System:
 North American Datum of 1983 (NAD83), projected to the State Plane Coordinate System (SPCS), Louisiana South Zone. Distance units in U.S. Survey Feet.
 Vertical Datum:
 Soundings are shown in feet and indicate depths below Low Water Reference Plane 2007 (NAVD).
 Distances on the Mississippi River, above and below Head of Passes are shown at 1 mile intervals.
 The location of navigation aids are based on and provided by the U.S. Coast Guard and USACE crew.
 2015 Aerial Photography data source: NAIP, USDA-FSA-APFO Aerial Photography Field Office.
 Reference is N.O.A. Navigation Chart No. 11370.
 ** Shoalest Sounding per Quarter per Reach.
 *** High frequency (200 kHz) survey data represents the first signal return at a sounding location and will include suspended solids, known as "fluff", if present. Low frequency (20 kHz) survey data normally penetrates through this "fluff" layer to depict elevations of consolidated bottom material. Low frequency accuracies may vary depending on channel conditions and bathymeter settings.

**Sheet Reference Number
1 of 97**

Revision Number:
4.2-20200420