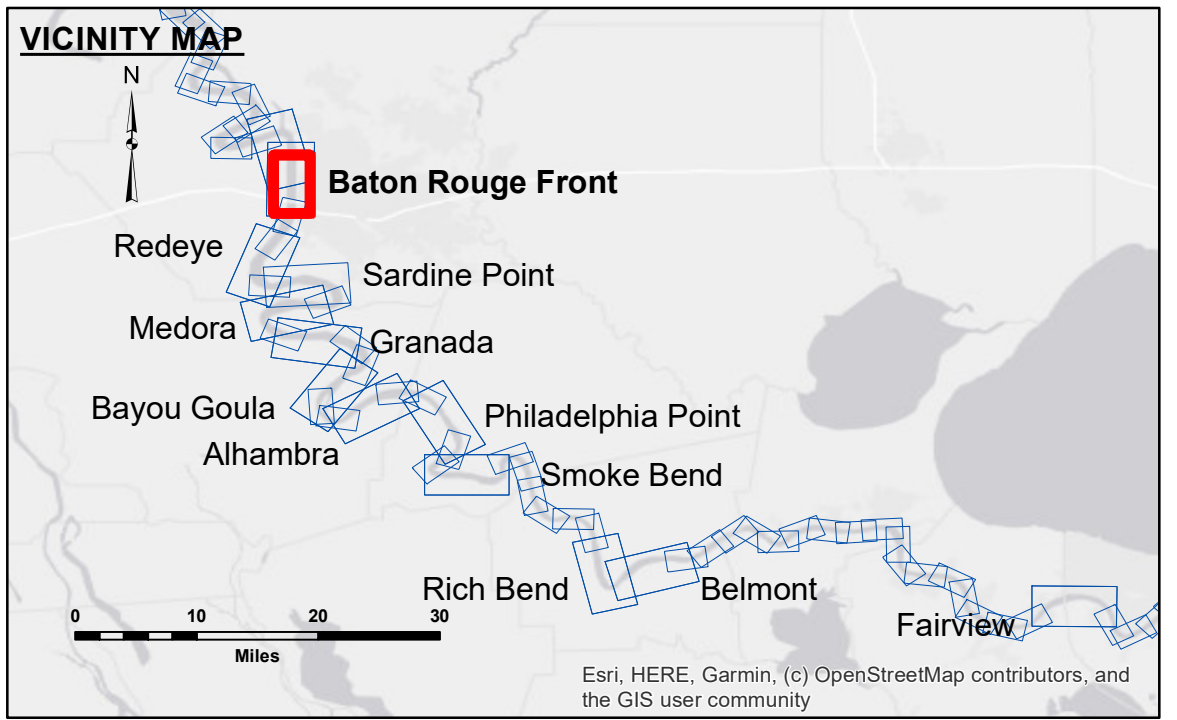


DISCLAIMER
 The information depicted on this map represents the results of a survey conducted by the U.S. Army Corps of Engineers. The data is subject to change without notice and is not to be used for any purpose other than that for which it was intended. The user is responsible for the accuracy, completeness, and reliability of the data. The Corps of Engineers does not warrant the accuracy or reliability of the data. The Corps of Engineers is not responsible for any damage or injury resulting from the use of this data. The Corps of Engineers is not responsible for any damage or injury resulting from the use of this data. The Corps of Engineers is not responsible for any damage or injury resulting from the use of this data.

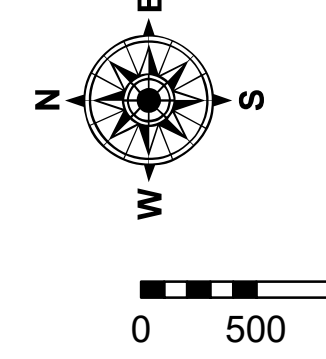
Surveyed By:	RYLAND/SIMMONS
Plotted By:	BD
Checked By:	ADJH

U.S. ARMY CORPS OF ENGINEERS
 NEW ORLEANS DISTRICT

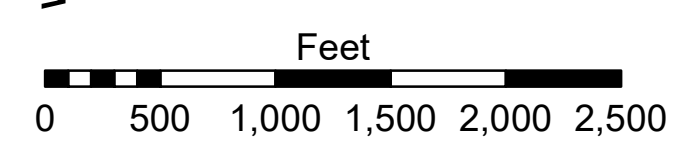


LEGEND	
--- Federal Navigation Channel	● Cable Area
— Federal Navigation Center Line	■ Placement Area
— As-built Pipeline/Cable	□ Anchorage Area
..... Unconfirmed Pipeline/Cable	⊗ Obstruction Point
— Project Depth Contour	✈ Wrecks-Submerged
□ Borrow Area	★ Beacon, General
● Shoalest Sounding**	◆ Red Navigation Buoy
★ Beacon, General	◆ Green Navigation Buoy

0' and above	Green
0' to -5'	Yellow
-5' to -10'	Orange
-10' to -20'	Light Blue
-20' to -30'	Blue
-30' to -35'	Dark Blue
-35' to -40'	Light Purple
-40' to -45'	Dark Purple
-45' and below	White



LWRP: 2.6
 Gage Reading: BR:23.6 D:15.1 USED:24.00 NAVD
 Sea Conditions: CALM
 Vessel Name: M/V LAFOURCHE
 Survey Type: CS
 Sounding Frequency***: HIGH



NOTES:
 Horizontal Coordinate System:
 North American Datum of 1983 (NAD83), projected to the State Plane Coordinate System (SPCS), Louisiana South Zone. Distance units in U.S. Survey Feet.
 Vertical Datum:
 Soundings are shown in feet and indicate depths below Low Water Reference Plane 2007 (NAVD).
 Distances on the Mississippi River, above and below Head of Passes are shown at 1 mile intervals.
 The location of navigation aids are based on and provided by the U.S. Coast Guard and USACE crew.
 2015 Aerial Photography data source: NAIP, USDA-FSA-APFO Aerial Photography Field Office.
 Reference is N.O.A. Navigation Chart No. 11370.
 ** Shoalest Sounding per Quarter per Reach.
 *** High frequency (200 kHz) survey data represents the first signal return at a sounding location and will include suspended solids, known as "fluff", if present. Low frequency (20 kHz) survey data normally penetrates through this "fluff" layer to depict elevations of consolidated bottom material. Low frequency accuracies may vary depending on channel conditions and bathymeter settings.

**MISSISSIPPI RIVER - B.R. TO GULF
 BATON ROUGE FRONT CROSSING
 MD_01_BRF_20250114_CS
 14 January 2025**

**Sheet Reference Number
 1 of 97**

Revision Number:
 4.2-20200420