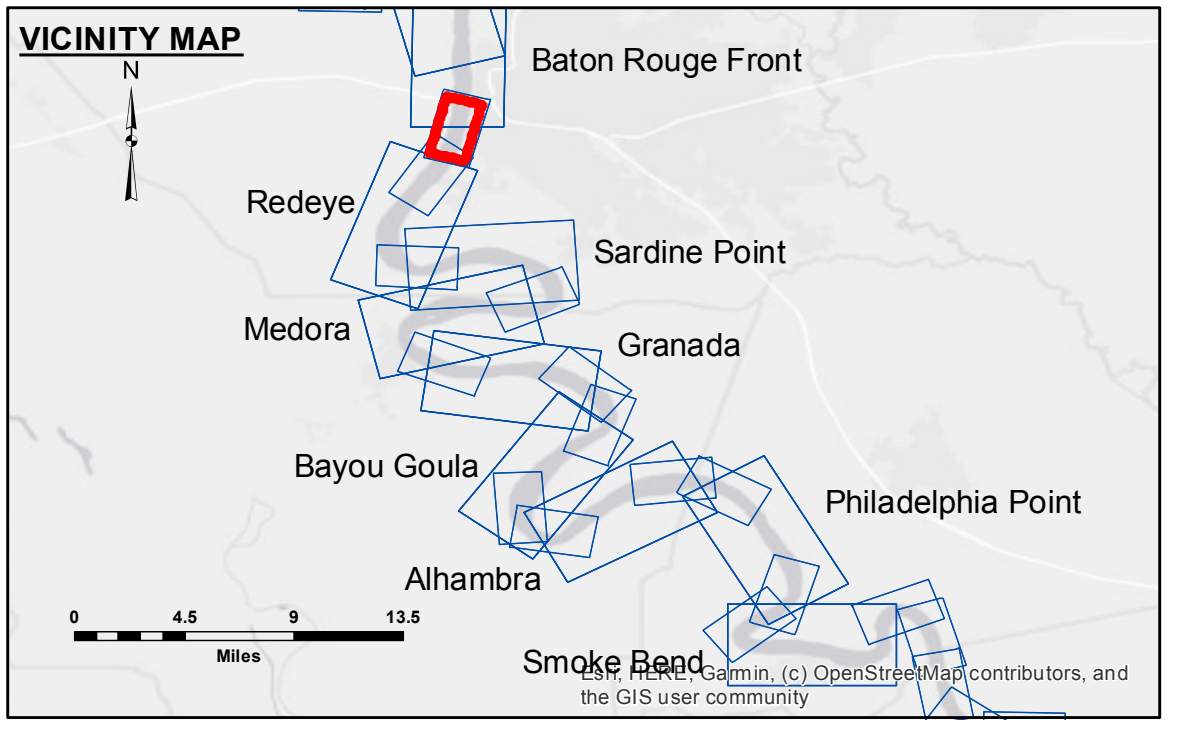


**Accession:** The United States Government furnishes these data and the recipient accepts and uses them with the express understanding that they are for official use only and are not to be distributed, reproduced, or used for any purpose other than that intended by the Government. The user is responsible for the accuracy, reliability, usability, or suitability for any particular purpose of the information. The application of the data for other than its intended purpose is at the user's risk. The user may not transfer these data to others without the written permission of the Government. The information depicted on this map represents the results of a survey conducted on the ground and is not to be used for navigation purposes. The information is provided for informational purposes only. The user is responsible for the accuracy, reliability, usability, or suitability for any particular purpose of the information. The application of the data for other than its intended purpose is at the user's risk. The user may not transfer these data to others without the written permission of the Government. The information depicted on this map represents the results of a survey conducted on the ground and is not to be used for navigation purposes. The information is provided for informational purposes only.

U.S. ARMY CORPS OF ENGINEERS NEW ORLEANS DISTRICT		
Submitted By:	Surveyed By:	Checked By:
Recommended By:	RYLAND/RHODEN	AC
Project:	Plotted By:	
Sheet Survey Section:	BD	
Other Waterways Maintenance Section:		

**MISSISSIPPI RIVER - B. R. TO GULF**  
**ARLINGTON - SHEET 1**  
**MD\_02\_AR1X\_20210112\_CS**  
**12 January 2021**

**Sheet Reference Number**  
**3 of 97**



**LEGEND**

--- Federal Navigation Channel	○ Cable Area	■ Shoaling Area	■ 0' and above
— Federal Navigation Center Line	□ Placement Area	● Shoalest Sounding**	■ 0' to -5'
— As-built Pipeline/Cable	⊗ Anchorage Area	☆ Beacon, General	■ -5' to -10'
..... Unconfirmed Pipeline/Cable	⊗ Obstruction Point	◆ Red Navigation Buoy	■ -10' to -20'
— Project Depth Contour	⊗ Wrecks-Submerged	◆ Green Navigation Buoy	■ -20' to -30'
			■ -30' to -35'
			■ -35' to -40'
			■ -40' to 45'
			■ -45' and below

**LWRP:** 2.4  
**Gage Reading:** BR:27.3 D:19.0 USED:26.90 NAVD  
**Sea Conditions:** CHOPPY  
**Vessel Name:** OB-189  
**Survey Type:** CS  
**Sounding Frequency\*\*\*:** HIGH

**NOTES:**  
 Horizontal Coordinate System:  
 North American Datum of 1983 (NAD83), projected to the State Plane Coordinate System (SPCS), Louisiana South Zone. Distance units in U.S. Survey Feet.  
 Vertical Datum:  
 Soundings are shown in feet and indicate depths below Low Water Reference Plane 2007 (NAVD).  
 Distances on the Mississippi River, above and below Head of Passes are shown at 1 mile intervals.  
 The location of navigation aids are based on and provided by the U.S. Coast Guard and USACE crew.  
 2015 Aerial Photography data source: NAIP, USDA-FSA-APFO Aerial Photography Field Office.  
 Reference is N.O.A.A. Navigation Chart No. 11370.  
 \*\*\* Shoalest Sounding per Quarter per Reach.

