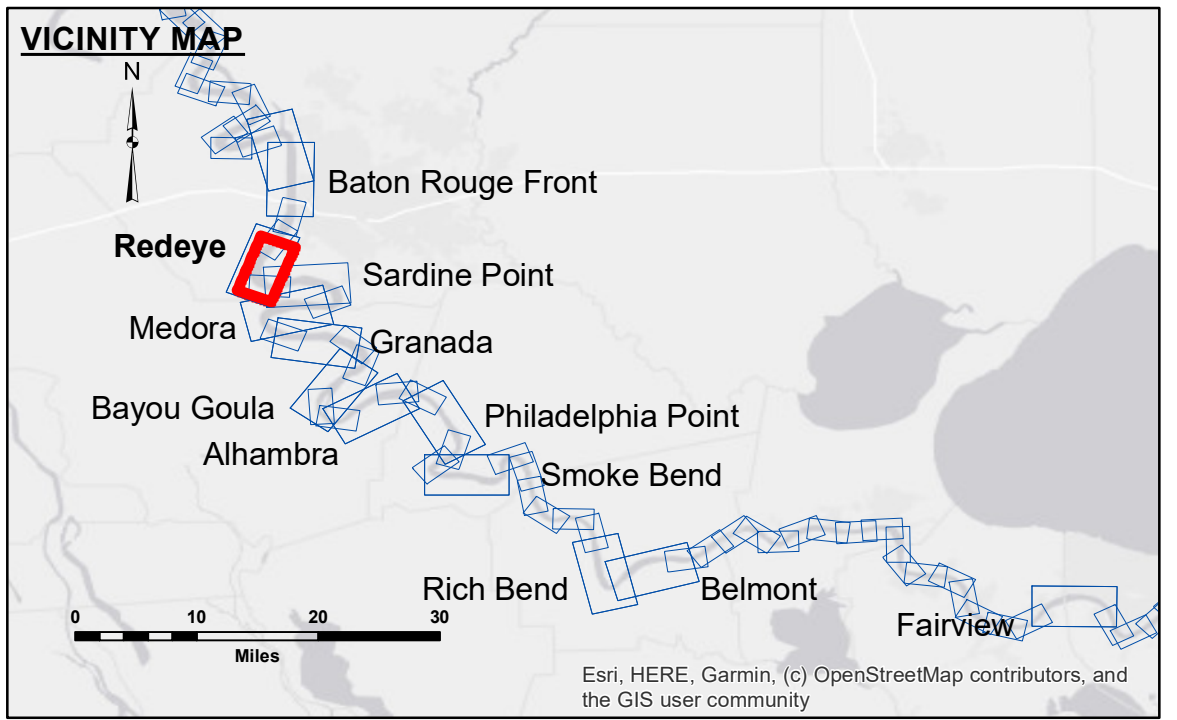
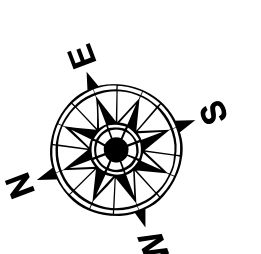


DIKE NO.	CONSTRUCTED DIKE ELEVATION
1	-5 NGVD OR -7.6 LWRP
2	-5 NGVD OR -7.6 LWRP
3	0 NGVD
4	0 NGVD OR -2.6 LWRP
5	0 NGVD OR -2.6 LWRP
6	0 NGVD OR -2.6 LWRP

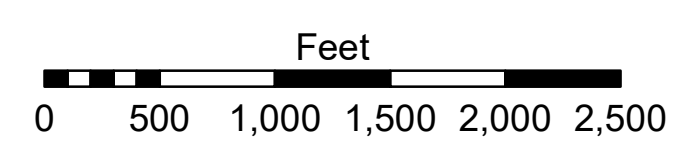


LEGEND

--- Federal Navigation Channel	○ Cable Area	□ Borrow Area	■ 0' and above
— Federal Navigation Center Line	■ Placement Area	● Shoalest Sounding**	■ 0' to -5'
— As-built Pipeline/Cable	□ Anchorage Area	★ Beacon, General	■ -5' to -10'
..... Unconfirmed Pipeline/Cable	⊗ Obstruction Point	◆ Red Navigation Buoy	■ -10' to -20'
— Project Depth Contour	✈ Wrecks-Submerged	◆ Green Navigation Buoy	■ -20' to -30'
			■ -30' to -35'
			■ -35' to -40'
			■ -40' to 45'
			■ -45' and below



LWRP: 2.6
 Gage Reading: BR:27.1 D:17.9 USED:26.3 NAVD
 Sea Conditions: CALM
 Vessel Name: OB-189
 Survey Type: CONDITION
 Sounding Frequency***: HIGH



NOTES:
 Horizontal Coordinate System:
 North American Datum of 1983 (NAD83), projected to the State Plane Coordinate System (SPCS), Louisiana South Zone. Distance units in U.S. Survey Feet.
 Vertical Datum:
 Soundings are shown in feet and indicate depths below Low Water Reference Plane 2007 (NAVD).
 Distances on the Mississippi River, above and below Head of Passes are shown at 1 mile intervals.
 The location of navigation aids are base on and provided by the U.S. Coast Guard and USACE crew.
 2015 Aerial Photography data source: NAIP, USDA-FSA-APFO Aerial Photography Field Office.
 Reference is N.O.A. Navigation Chart No. 11370.
 ** Shoalest Sounding per Quarter per Reach.
 *** High frequency (200 kHz) survey data represents the first signal return at a sounding location and will include suspended solids, known as "fluff", if present. Low frequency (20 kHz) survey data normally penetrates through this "fluff" layer to depict elevations of consolidated bottom material. Low frequency accuracies may vary depending on channel conditions and fathometer settings.



DISCLAIMER:
 The United States Government furnishes these data and the recipient accepts and uses them with the express understanding that the data are not to be used for any purpose other than that for which they were originally collected, and that the data are not to be used for any purpose other than that for which they were originally collected, and that the data are not to be used for any purpose other than that for which they were originally collected.
 The information depicted on this map represents the results of a survey conducted by the United States Army Corps of Engineers and is not to be used for any purpose other than that for which it was originally collected, and that the data are not to be used for any purpose other than that for which they were originally collected.

Submitted:	Surveyed By: JH.SP	Plotted By: BD	Checked By: AC
Recommended:	Chief, Survey Section		
Approved:	Chief, Waterways Maintenance Section		

**MISSISSIPPI RIVER - B.R. TO GULF
 REDEYE CROSSING
 MD_04_REDX_20191105_CS
 05 November 2019**

**Sheet Reference Number
 4 of 97**

Revision Number: 4-10-2019/012