

| DIKE NO. | CONSTRUCTED DIKE ELEVATION |
|----------|----------------------------|
| 1 | -5 NGVD OR -7.6 LWRP |
| 2 | -5 NGVD OR -7.6 LWRP |
| 3 | 0 NGVD OR -2.6 LWRP |
| 4 | 0 NGVD OR -2.6 LWRP |
| 5 | 0 NGVD OR -2.6 LWRP |
| 6 | 0 NGVD OR -2.6 LWRP |



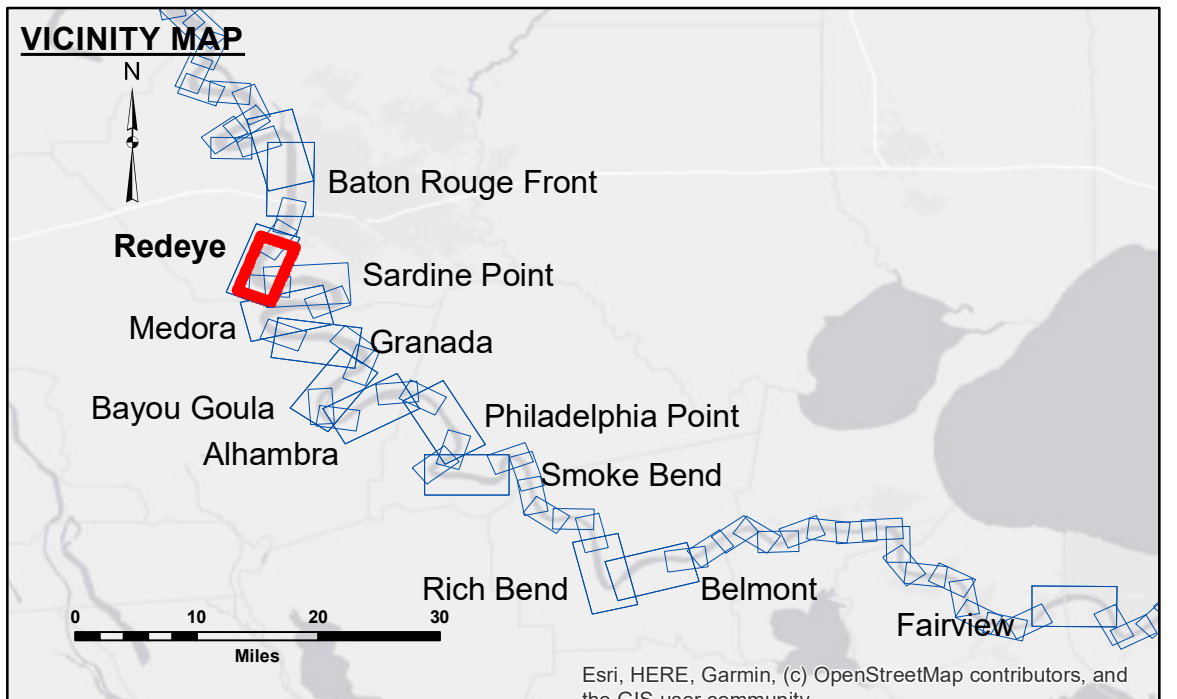
DISCLAIMER
The information depicted on this map represents the results of a survey conducted by the U.S. Army Corps of Engineers. The user is responsible for the accuracy, completeness, and reliability of the data for its intended use. The Corps of Engineers does not warrant the accuracy of the data for any purpose other than that for which it was collected. The Corps of Engineers does not assume any liability for damages or losses resulting from the use of this information. The user is advised to consult the appropriate technical manual for the equipment used in the survey and to verify the accuracy of the data before using it for any purpose other than that for which it was collected.

ACCESS AGREEMENT
The United States Government furnishes these data and the recipient accepts and uses them with the express understanding that the data are not to be used for any purpose other than that for which they were collected. The recipient agrees to indemnify the United States Government from and hold it harmless from all claims, damages, and expenses, including reasonable attorneys' fees, that may be incurred by the United States Government as a result of the use of these data for any purpose other than that for which they were collected. The recipient may not transfer these data to others without the written consent of the United States Government. The recipient may not use these data to represent the general condition existing at that time.

| | |
|--------------|----------------------|
| Submitted: | Surveyed By: DIS/SIS |
| Recommended: | Plotted By: AO |
| Approved: | Checked By: AO |

U.S. ARMY CORPS OF ENGINEERS
NEW ORLEANS DISTRICT

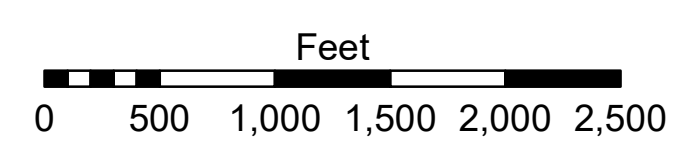
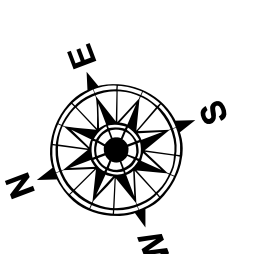
**MISSISSIPPI RIVER - B.R. TO GULF
REDEYE CROSSING
MD_04_RED_X_20201118_AD
18 November 2020**



LEGEND

- Federal Navigation Channel
- Federal Navigation Center Line
- As-built Pipeline/Cable
- Unconfirmed Pipeline/Cable
- Project Depth Contour
- Cable Area
- Placement Area
- Anchorage Area
- ⊗ Obstruction Point
- ✈ Wrecks-Submerged
- Borrow Area
- Shoalest Sounding**
- ☆ Beacon, General
- ◆ Red Navigation Buoy
- ◆ Green Navigation Buoy

| | |
|----------------|--------------|
| 0' and above | 0' to -5' |
| -5' to -10' | -10' to -20' |
| -20' to -30' | -30' to -35' |
| -35' to -40' | -40' to -45' |
| -45' and below | |



LWRP: 2.4
Gage Reading: BR:11.8D:7.1 USED:11.4 NAVD
Sea Conditions: SMOOTH
Vessel Name: LAFORCHE
Survey Type: AD
Sounding Frequency***: HIGH

NOTES:
Horizontal Coordinate System:
North American Datum of 1983 (NAD83), projected to the State Plane Coordinate System (SPCS), Louisiana South Zone. Distance units in U.S. Survey Feet.
Vertical Datum:
Soundings are shown in feet and indicate depths below Low Water Reference Plane 2007 (NAVD).
Distances on the Mississippi River, above and below Head of Passes are shown at 1 mile intervals.
The location of navigation aids are based on and provided by the U.S. Coast Guard and USACE crew.
2015 Aerial Photography data source: NAIP, USDA-FSA-APFO Aerial Photography Field Office.
Reference is N.O.A. Navigation Chart No. 11370.
** Shoalest Sounding per Quarter per Reach.
*** High frequency (200 kHz) survey data represents the first signal return at a sounding location and will include suspended solids, known as "fluff", if present. Low frequency (20 kHz) survey data normally penetrates through this "fluff" layer to depict elevations of consolidated bottom material. Low frequency accuracies may vary depending on channel conditions and fathometer settings.

**Sheet Reference Number
4 of 97**