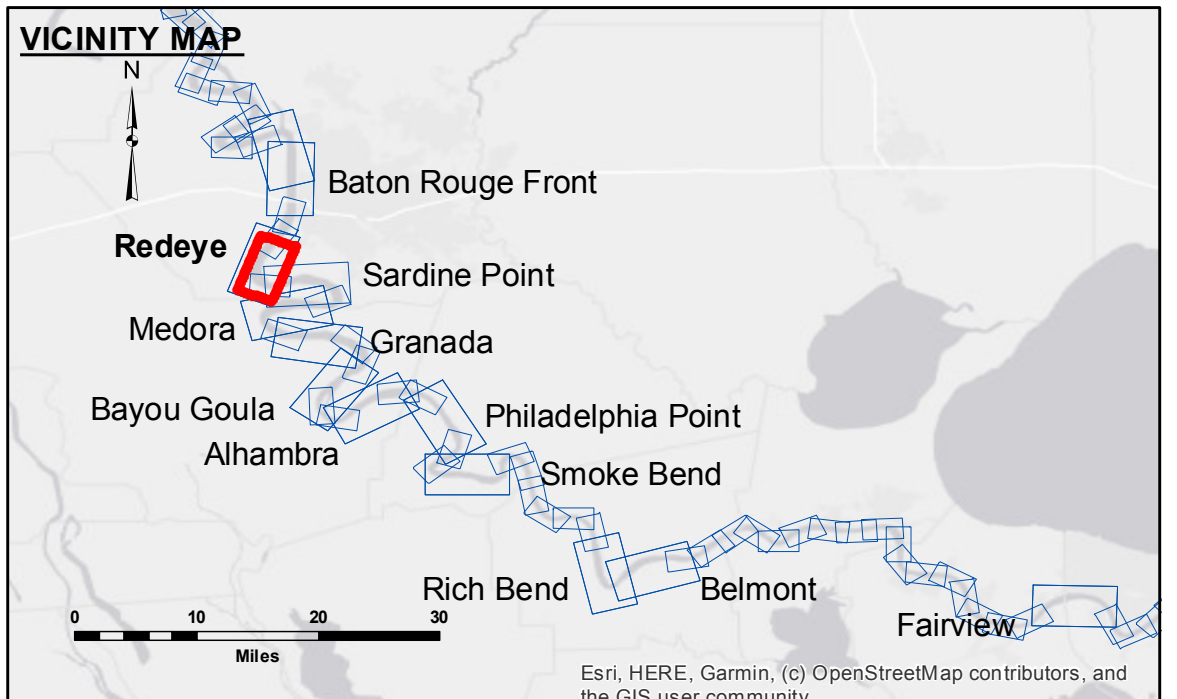


DIKE NO.	CONSTRUCTED DIKE ELEVATION
1	-5 NGVD OR -7.6 LWRP
2	-5 NGVD OR -7.6 LWRP
3	0 NGVD OR -2.6 LWRP
4	0 NGVD OR -2.6 LWRP
5	0 NGVD OR -2.6 LWRP
6	0 NGVD OR -2.6 LWRP



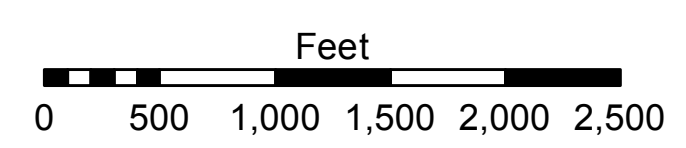
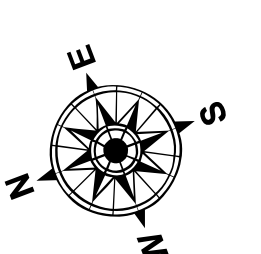
DISCLAIMER: The data represented on this map is the result of a survey conducted for a specific purpose and is not intended for any other purpose. The user is responsible for the accuracy, reliability, usability, or suitability for any particular purpose of the information provided. The application of the data for other than its intended purpose is at the user's risk. The information depicted on this map represents the results of a survey conducted for a specific purpose and is not intended for any other purpose. The user is responsible for the accuracy, reliability, usability, or suitability for any particular purpose of the information provided. The application of the data for other than its intended purpose is at the user's risk.

Submitted:	Surveyed By:	DS/PS
Recommended:	Plotted By:	BD
Approved:	Checked By:	AC



LEGEND

- Federal Navigation Channel
- Federal Navigation Center Line
- As-built Pipeline/Cable
- Unconfirmed Pipeline/Cable
- Project Depth Contour
- Cable Area
- Placement Area
- Anchorage Area
- ⊗ Obstruction Point
- ✈ Wrecks-Submerged
- Borrow Area
- Shoalest Sounding**
- ★ Beacon, General
- ◆ Red Navigation Buoy
- ◆ Green Navigation Buoy
- 0' and above
- 0' to -5'
- 5' to -10'
- 10' to -20'
- 20' to -30'
- 30' to -35'
- 35' to -40'
- 40' to -45'
- 45' and below



LWRP: 2.4
 Gage Reading: BR:10.3 D:6.1 USED:10.0 NAVD
 Sea Conditions: CALM
 Vessel Name: M/V LAFORCHE
 Survey Type: CS
 Sounding Frequency***: HIGH

NOTES:
 Horizontal Coordinate System:
 North American Datum of 1983 (NAD83), projected to the State Plane Coordinate System (SPCS), Louisiana South Zone. Distance units in U.S. Survey Feet.
 Vertical Datum:
 Soundings are shown in feet and indicate depths below Low Water Reference Plane 2007 (NAVD).
 Distances on the Mississippi River, above and below Head of Passes are shown at 1 mile intervals.
 The location of navigation aids are based on and provided by the U.S. Coast Guard and USACE crew.
 2015 Aerial Photography data source: NAIP, USDA-FSA-APFO Aerial Photography Field Office.
 Reference is N.O.A.A. Navigation Chart No. 11370.
 ** Shoalest Sounding per Quarter per Reach.
 *** High frequency (200 kHz) survey data represents the first signal return at a sounding location and will include suspended solids, known as "fluff", if present. Low frequency (20 kHz) survey data normally penetrates through this "fluff" layer to depict elevations of consolidated bottom material. Low frequency accuracies may vary depending on channel conditions and bathymeter settings.

**MISSISSIPPI RIVER - B.R. TO GULF
 REDEYE CROSSING
 MD_04_RED_X_20210817_AD
 17 August 2021**

**Sheet Reference Number
 4 of 97**