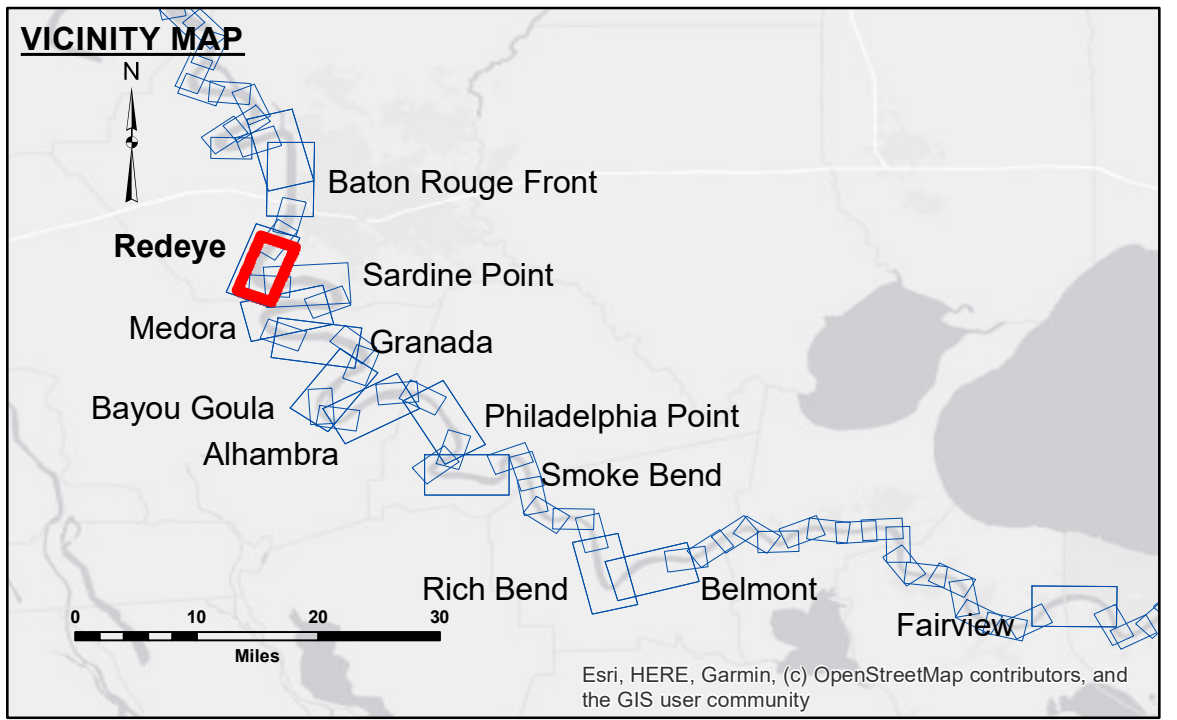


DISCLAIMER
 The information depicted on this map represents the results of a survey conducted by the U.S. Army Corps of Engineers. The user is responsible for the accuracy, completeness, and reliability of the data for its intended use. The user is responsible for the accuracy, completeness, and reliability of the data for its intended use. The user is responsible for the accuracy, completeness, and reliability of the data for its intended use.

| | | | |
|--------------|--------------------------------------|-------------|-------------|
| Submitted: | Surveyed By: | Plotted By: | Checked By: |
| | RYLAND/SIMMONS | JH | JH |
| Recommended: | Chief, Survey Section | | |
| Approved: | Chief, Waterways Maintenance Section | | |



LEGEND

- Federal Navigation Channel
- Federal Navigation Center Line
- As-built Pipeline/Cable
- Unconfirmed Pipeline/Cable
- Project Depth Contour
- Cable Area
- Placement Area
- Anchorage Area
- ⊗ Obstruction Point
- ✈ Wrecks-Submerged
- Borrow Area
- Shoalest Sounding**
- ☆ Beacon, General
- ◆ Red Navigation Buoy
- ◆ Green Navigation Buoy
- 0' and above
- 0' to -5'
- 5' to -10'
- 10' to -20'
- 20' to -30'
- 30' to -35'
- 35' to -40'
- 40' to -45'
- 45' and below

NOTES:
 Horizontal Coordinate System:
 North American Datum of 1983 (NAD83), projected to the State Plane Coordinate System (SPCS), Louisiana South Zone. Distance units in U.S. Survey Feet.
 Vertical Datum:
 Soundings are shown in feet and indicate depths below Low Water Reference Plane 2007 (NAVD).
 Distances on the Mississippi River, above and below Head of Passes are shown at 1 mile intervals.
 The location of navigation aids are based on and provided by the U.S. Coast Guard and USACE crew.
 2015 Aerial Photography data source: NAIP, USDA-FSA-APFO Aerial Photography Field Office.
 Reference is N.O.A. Navigation Chart No. 11370.
 ** Shoalest Sounding per Quarter per Reach.
 *** High frequency (200 kHz) survey data represents the first signal return at a sounding location and will include suspended solids, known as "fluff", if present. Low frequency (20 kHz) survey data normally penetrates through this "fluff" layer to depict elevations of consolidated bottom material. Low frequency accuracies may vary depending on channel conditions and fathometer settings.

LWRP: 2.4
 Gage Reading: BR:9.8 D:4.4 USED: 9.40 NAVD
 Sea Conditions: CALM
 Vessel Name: LAFORCHE
 Survey Type: CS
 Sounding Frequency***: HIGH

0 500 1,000 1,500 2,000 2,500 Feet

MISSISSIPPI RIVER - B.R. TO GULF
REDEYE CROSSING
MD_04_RED_X_20230816_AD
16 August 2023

Sheet Reference Number
4 of 97

Revision Number:
 4-2-2024(4/2)