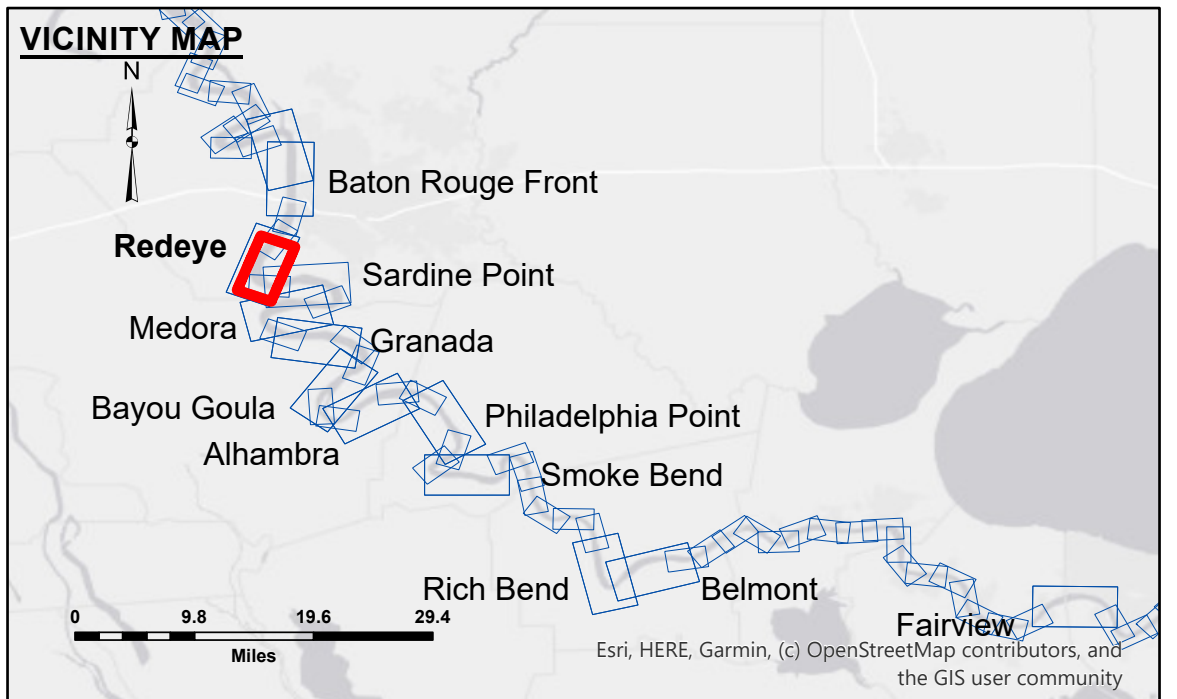


DISCLAIMER: The United States Government furnishes these data and the recipient accepts and uses them with the express understanding that the data are not intended for any purpose other than that for which they were prepared. The user is responsible for the results of any application of the data for other than its intended purpose. The data are not to be used for navigation, engineering, or other purposes without the express written consent of the U.S. Army Corps of Engineers. The U.S. Army Corps of Engineers is not responsible for any errors or omissions in the data or for any consequences arising from the use of the data. The U.S. Army Corps of Engineers is not liable for any damages, including consequential damages, arising from the use of the data. The U.S. Army Corps of Engineers is not responsible for any errors or omissions in the data or for any consequences arising from the use of the data. The U.S. Army Corps of Engineers is not liable for any damages, including consequential damages, arising from the use of the data.

DISCLAIMER: The United States Government furnishes these data and the recipient accepts and uses them with the express understanding that the data are not intended for any purpose other than that for which they were prepared. The user is responsible for the results of any application of the data for other than its intended purpose. The data are not to be used for navigation, engineering, or other purposes without the express written consent of the U.S. Army Corps of Engineers. The U.S. Army Corps of Engineers is not responsible for any errors or omissions in the data or for any consequences arising from the use of the data. The U.S. Army Corps of Engineers is not liable for any damages, including consequential damages, arising from the use of the data.

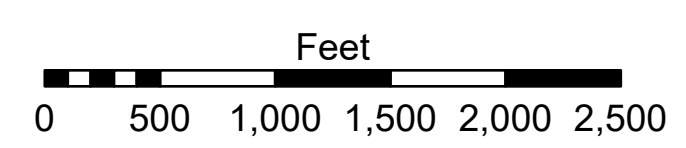
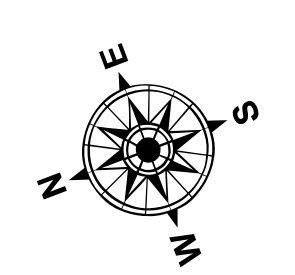
U.S. ARMY CORPS OF ENGINEERS NEW ORLEANS DISTRICT	
Submitted:	Surveyed By: LTMF
Recommended: Chief, Survey Section	Plotted By: JHT
Approved: Chief, Waterways Maintenance Section	Checked By: JHT

**MISSISSIPPI RIVER - B.R. TO GULF
REDEYE CROSSING
MD_04_RED_X_20260220_CS
20 February 2026**



LEGEND	
--- Federal Navigation Channel	○ Cable Area
— Federal Navigation Center Line	□ Placement Area
— As-built Pipeline/Cable	□ Anchorage Area
..... Unconfirmed Pipeline/Cable	⊗ Obstruction Point
— Project Depth Contour	✈ Wrecks-Submerged
□ Borrow Area	★ Beacon, General
● Shoalest Sounding**	◆ Red Navigation Buoy
★ Beacon, General	◆ Green Navigation Buoy

0' and above	0' to -5'
-5' to -10'	-10' to -20'
-20' to -30'	-30' to -35'
-35' to -40'	-40' to -45'
-45' and below	



LWRP: 2.4
 Gage Reading: BR:7.6 D:3.8 VRN:6.85 NAVD88
 Sea Conditions: CALM
 Vessel Name: LAFORCHE
 Survey Type: CONDITION
 Sounding Frequency***: HIGH

NOTES:
 Horizontal Coordinate System:
 North American Datum of 1983 (NAD83), projected to the State Plane Coordinate System (SPCS), Louisiana South Zone. Distance units in U.S. Survey Feet.
 Vertical Datum:
 Soundings are shown in feet and indicate depths below Low Water Reference Plane 2007 (NAVD).
 Distances on the Mississippi River, above and below Head of Passes are shown at 1 mile intervals.
 The location of navigation aids are based on and provided by the U.S. Coast Guard and USACE crew.
 2021 Aerial Photography data source: NAIP, USDA-FSA-APFO Aerial Photography Field Office.
 Reference is N.O.A.A. Navigation Chart No. 11370.
 ** Shoalest Sounding per Quarter per Reach.
 *** High frequency (200 kHz) survey data represents the first signal return at a sounding location and will include suspended solids, known as "fluff", if present. Low frequency (20 kHz) survey data normally penetrates through this "fluff" layer to depict elevations of consolidated bottom material. Low frequency accuracies may vary depending on channel conditions and fathometer settings.

**Sheet
Reference
Number
4 of 97**