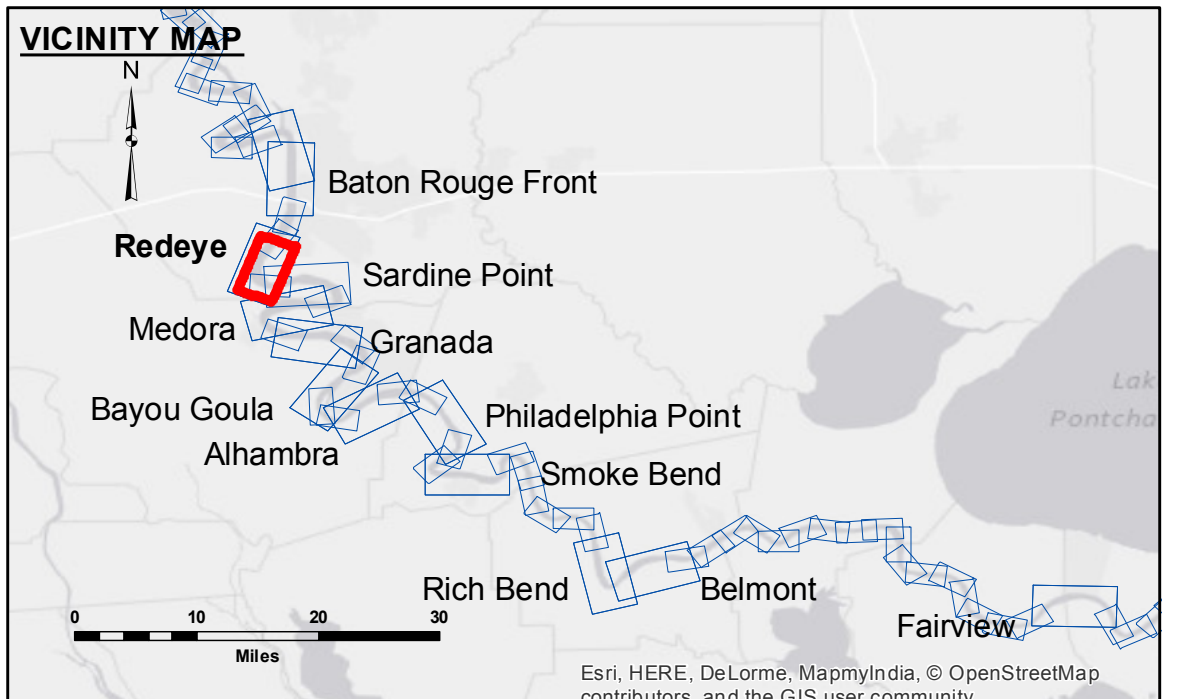


DIKE NO.	CONSTRUCTED DIKE ELEVATION
1	-5 NGVD
2	OR -7.6 LWRP -5 NGVD
3	OR -7.6 LWRP 0 NGVD
4	OR -2.6 LWRP 0 NGVD
5	OR -2.6 LWRP 0 NGVD
6	OR -2.6 LWRP 0 NGVD



LEGEND

--- Federal Navigation Channel	○ Cable Area	□ Borrow Area	■ 0' and above
— Federal Navigation Center Line	▭ Placement Area	● Shoalest Sounding**	■ 0' to -5'
— As-built Pipeline/Cable	⊠ Anchorage Area	☆ Beacon, General	■ -5' to -10'
⋯ Unconfirmed Pipeline/Cable	⊗ Obstruction Point	◆ Red Navigation Buoy	■ -10' to -20'
— Project Depth Contour	✈ Wrecks-Submerged	◆ Green Navigation Buoy	■ -20' to -30'
			■ -30' to -35'
			■ -35' to -40'
			■ -40' to 45'
			■ -45' and below

NOTES:

Horizontal Coordinate System:
North American Datum of 1983 (NAD83), projected to the State Plane Coordinate System (SPCS), Louisiana South Zone. Distance units in U.S. Survey Feet.

Vertical Datum:
Soundings are shown in feet and indicate depths below Low Water Reference Plane 2007 (NGVD).

Distances on the Mississippi River, above and below Head of Passes are shown at 1 mile intervals.

The location of navigation aids are based on and provided by the U.S. Coast Guard and USACE crew.

2010 Aerial Photography data source: NAIP, USDA-FSA-APFO Aerial Photography Field Office.

Reference is N.O.A.A. Navigation Chart No. 11370.

** Shoalest Sounding per Quarter per Reach.

*** High frequency (200 kHz) survey data represents the first signal return at a sounding location and will include suspended solids, known as "fluff", if present. Low frequency (20 kHz) survey data normally penetrates through this "fluff" layer to depict elevations of consolidated bottom material. Low frequency accuracies may vary depending on channel conditions and bathymeter settings.

LWRP: 2.6
Gage Reading: BR:9.8 D:5.7 USED:9.50 NGVD
Sea Conditions: CALM
Vessel Name: M/V LAFORCHE
Survey Type: CONDITION
Sounding Frequency***: HIGH

0 500 1,000 1,500 2,000 2,500 Feet



DISCLAIMER: The United States Government furnishes these data and the recipient accepts and uses them with the express understanding that the Government makes no warranty, expressed or implied, concerning the accuracy, completeness, reliability, usability or suitability for any particular purpose of the data. The user is responsible for the results. The application of the data for other than its intended purpose is at the user's risk. The user is responsible for the results. Data collected by the Corps of Engineers are subject to change without notice. The Corps of Engineers does not assume any liability for the use of these data for purposes not intended by the Corps of Engineers. The information depicted on this map represents the results of a survey conducted by the Corps of Engineers and is not to be used for any purpose other than that for which it was prepared. The Corps of Engineers does not assume any liability for the use of these data for purposes not intended by the Corps of Engineers.

Submitted:	DR:JA
Recommended:	AO
Approved:	ML

U.S. ARMY CORPS OF ENGINEERS
NEW ORLEANS DISTRICT

**MISSISSIPPI RIVER - B.R. TO GULF
REDEYE CROSSING
MD_04_RED_20150909
09 September 2015**

**Sheet Reference Number
4 of 97**