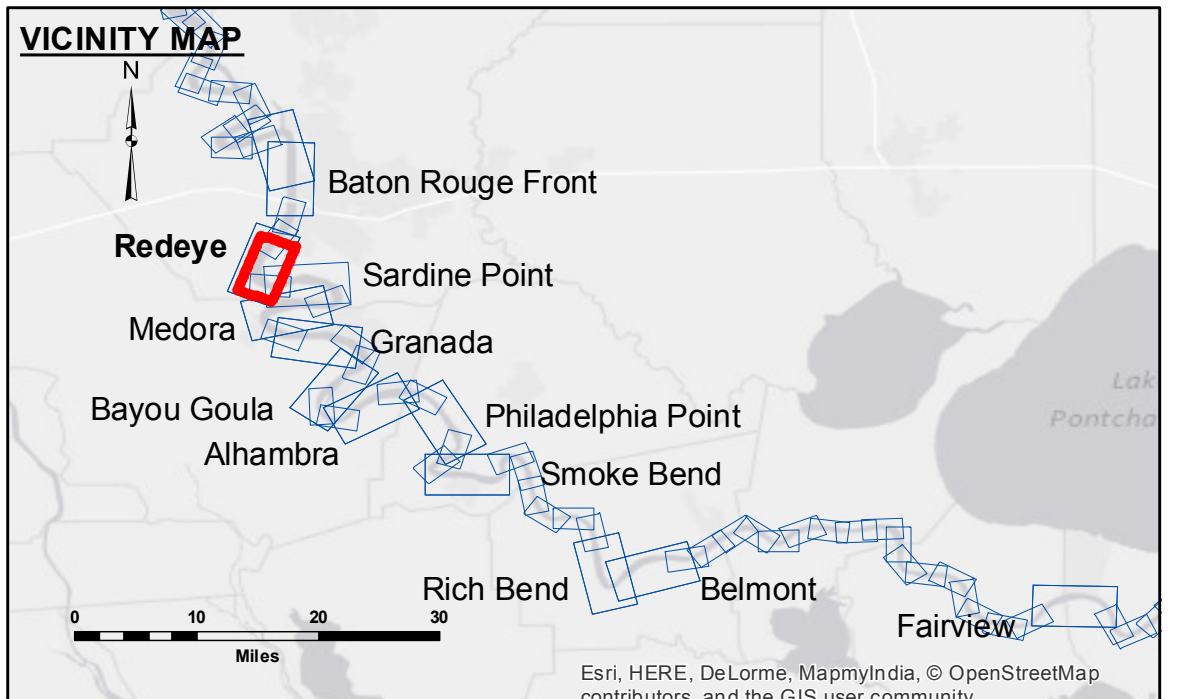


**ACCESS NOTES**  
 The United States Government furnishes these data and the recipient accepts and uses them with the express understanding that the Government makes no warranty, expressed or implied, concerning the accuracy, completeness, reliability, usability or suitability for any particular purpose of the data. The user is responsible for the results of the application of the data for other than its intended purpose. Data contained in this hydrographic survey data is subject to change due to several factors including but not limited to dredging, sedimentation, and other factors. The recipient may not transfer these data to others without the written consent of the U.S. Army Corps of Engineers. The recipient shall be responsible for changes in the hydrographic conditions when developed after the date of the survey. The information depicted on this map represents the results of a survey conducted on the date indicated. The recipient is considered to represent the general condition existing at that time.

Submitted:	Surveyed By:	DS, JH
Recommended:	Plotted By:	BITD
Approved:	Checked By:	MSK

U.S. ARMY CORPS OF ENGINEERS  
 NEW ORLEANS DISTRICT

**MISSISSIPPI RIVER - B.R. TO GULF  
 REDEYE CROSSING  
 MD\_04\_RED\_20151214  
 14 December 2015**



**LEGEND**

- Federal Navigation Channel
- Federal Navigation Center Line
- As-built Pipeline/Cable
- Unconfirmed Pipeline/Cable
- Project Depth Contour
- Cable Area
- Placement Area
- Anchorage Area
- Obstruction Point
- Wrecks-Submerged
- Borrow Area
- Shoalest Sounding\*\*
- Beacon, General
- Red Navigation Buoy
- Green Navigation Buoy

0' and above
0' to -5'
-5' to -10'
-10' to -20'
-20' to -30'
-30' to -35'
-35' to -40'
-40' to -45'
-45' and below

**NOTES:**  
 Horizontal Coordinate System:  
 North American Datum of 1983 (NAD83), projected to the State Plane Coordinate System (SPCS), Louisiana South Zone. Distance units in U.S. Survey Feet.  
 Vertical Datum:  
 Soundings are shown in feet and indicate depths below Low Water Reference Plane 2007 (NGVD).  
 Distances on the Mississippi River, above and below Head of Passes are shown at 1 mile intervals.  
 The location of navigation aids are base on and provided by the U.S. Coast Guard and USACE crew.  
 2010 Aerial Photography data source: NAIP, USDA-FSA-APFO Aerial Photography Field Office.  
 Reference is N.O.A.A. Navigation Chart No. 11370.  
 \*\* Shoalest Sounding per Quarter per Reach.  
 \*\*\* High frequency (200 kHz) survey data represents the first signal return at a sounding location and will include suspended solids, known as "fluff", if present. Low frequency (20 kHz) survey data normally penetrates through this "fluff" layer to depict elevations of consolidated bottom material. Low frequency accuracies may vary depending on channel conditions and bathymeter settings.

LWRP: 2.6  
 Gage Reading: BR:31.5 D:23.4 USED:30.8 NGVD  
 Sea Conditions: CALM  
 Vessel Name: M/V 189  
 Survey Type: CONTROL  
 Sounding Frequency\*\*\*: HIGH

Feet  
 0 500 1,000 1,500 2,000 2,500

**Sheet Reference Number**  
 4 of 97

Revision Number:  
 3.8-0-20150202