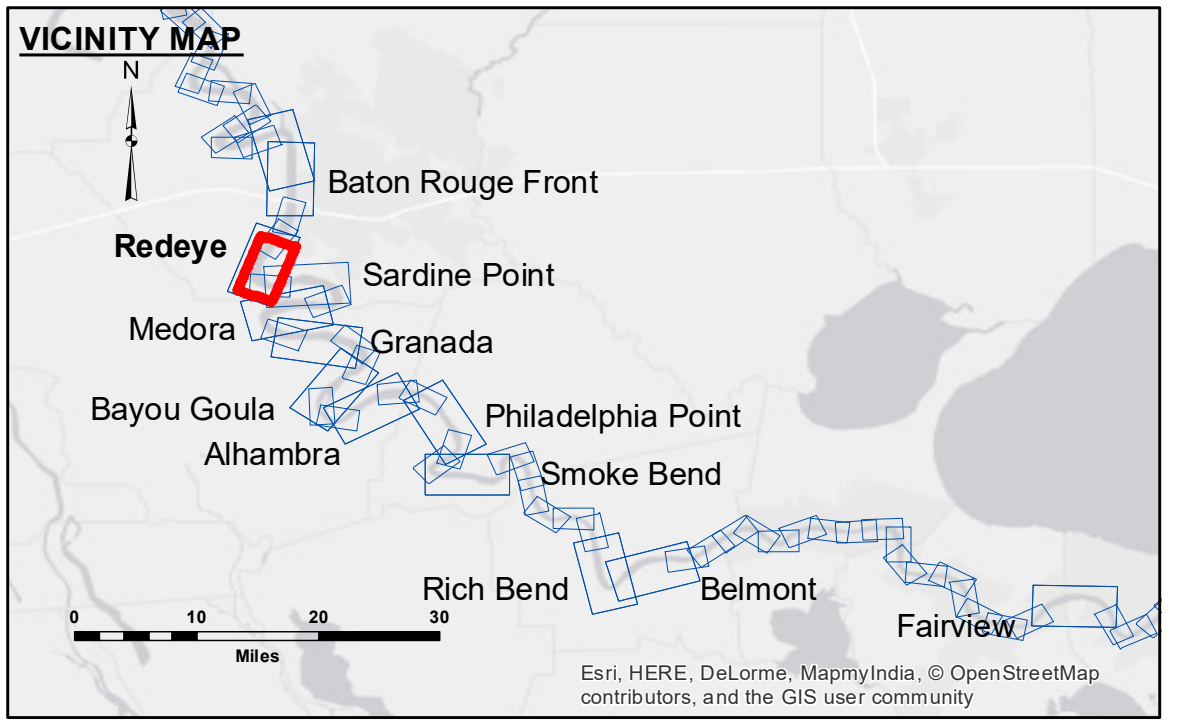
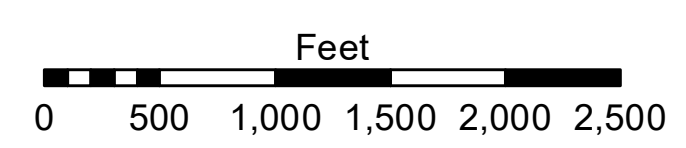
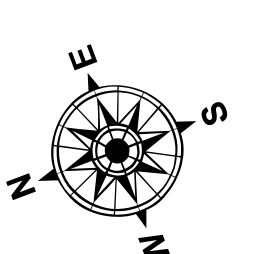


DIKE NO.	CONSTRUCTED DIKE ELEVATION
1	-5 NGVD
2	OR -7.6 LWRP
3	-5 NGVD
4	OR -7.6 LWRP
5	0 NGVD
6	OR -2.6 LWRP
7	0 NGVD
8	OR -2.6 LWRP
9	0 NGVD
10	OR -2.6 LWRP



**LEGEND**

--- Federal Navigation Channel	○ Cable Area	□ Borrow Area	■ 0' and above
— Federal Navigation Center Line	□ Placement Area	● Shoalest Sounding**	■ 0' to -5'
— As-built Pipeline/Cable	□ Anchorage Area	☆ Beacon, General	■ -5' to -10'
..... Unconfirmed Pipeline/Cable	⊗ Obstruction Point	◆ Red Navigation Buoy	■ -10' to -20'
— Project Depth Contour	✈ Wrecks-Submerged	◆ Green Navigation Buoy	■ -20' to -30'
			■ -30' to -35'
			■ -35' to -40'
			■ -40' to 45'
			■ -45' and below



LWRP: 2.6  
 Gage Reading: BR: 12.51 DON: 6.97 USED: 12.1 NGVD  
 Sea Conditions: CALM  
 Vessel Name: M/V LAFORUCHE  
 Survey Type: RECON  
 Sounding Frequency\*\*\*: HIGH

**NOTES:**  
 Horizontal Coordinate System:  
 North American Datum of 1983 (NAD83), projected to the State Plane  
 Coordinate System (SPCS), Louisiana South Zone. Distance units in U.S. Survey Feet.  
 Vertical Datum:  
 Soundings are shown in feet and indicate depths below Low Water Reference Plane 2007 (NGVD).  
 Distances on the Mississippi River, above and below Head of Passes are shown  
 at 1 mile intervals.  
 The location of navigation aids are base on and provided by the U.S. Coast Guard and USACE crew.  
 2010 Aerial Photography data source: NAIP, USDA-FSA-APFO Aerial Photography Field Office.  
 Reference is N.O.A.A. Navigation Chart No. 11370.  
 \*\* Shoalest Sounding per Quarter per Reach.  
 \*\*\* High frequency (200 kHz) survey data represents the first signal return at a sounding  
 location and will include suspended solids, known as "fluff", if present. Low frequency (20 kHz)  
 survey data normally penetrates through this "fluff" layer to depict elevations of consolidated bottom  
 material. Low frequency accuracies may vary depending on channel conditions and bathymeter  
 settings.



**DISCLAIMER:** The United States Government furnishes these data and the recipient accepts and uses them with the express understanding that the data are not warranted for any particular purpose of the recipient, and that the data are not to be used for any purpose other than that intended by the United States Government. The recipient may not transfer these data to others without the written consent of the United States Government. The information depicted on this map represents the results of a survey conducted on the date of the survey and is not to be used for any purpose other than that intended by the United States Government. The information depicted on this map represents the results of a survey conducted on the date of the survey and is not to be used for any purpose other than that intended by the United States Government.

U.S. ARMY CORPS OF ENGINEERS NEW ORLEANS DISTRICT		
Submitted:	Surveyed By: DS/PS	Plotted By: MS
Recommended:	Checked By: MS	Checked By: MS
Approved:	Checked By: MS	

**MISSISSIPPI RIVER - B.R. TO GULF  
 REDEYE CROSSING  
 MD\_04\_RED\_20171127\_AD  
 27 November 2017**

**Sheet Reference Number  
 4 of 97**